



Heath Road, Bebington, Wirral CH63 2HE

- Attractive Bay Fronted Three Bedroom Semi Detached Residence
- Well Appointed and Maintained Living Accommodation
- Three Good Sized Bedrooms and a four Piece Bathroom Suite
- Generous Sized Enclosed Rear Garden with Patio and Lawn
- Situated in the Highly Popular Residential Area of Bebington
- Hallway, Cloakroom, Two Reception Rooms and a Fitted Kitchen
- Off Road Parking, Double Glazing and Central Heating
- Closer Inspection Essential to Appreciate this Home in Full



£289,950



















Description

Move Residential are delighted to present for sale this traditional, bay fronted three bedroom semi detached property situated in the highly sought after area of Bebington. Well appointed and maintained the accommodation briefly comprises a hallway, cloakroom, two reception rooms and a well fitted kitchen. To the first floor you have two double bedrooms, third bedroom and a four piece bathroom. Further benefiting from off road parking, double glazing and gas central heating. Completing this home perfectly is the extensive rear garden, mainly laid to lawn with patio area. A closer inspection is essential to appreciate this home in full.

Hallway -14' 11" x 6' 6" (4.55m x 1.99m)

Dining Room -13' 0" x 11' 11" (3.95m x 3.62m)

Lounge -11' 5" x 13' 5" (3.47m x 4.10m)

Kitchen - 6' 11" x 12' 10" (2.10m x 3.91m)

First Floor Landing - 6' 11" x 11' 3" (2.1m x 3.43m)

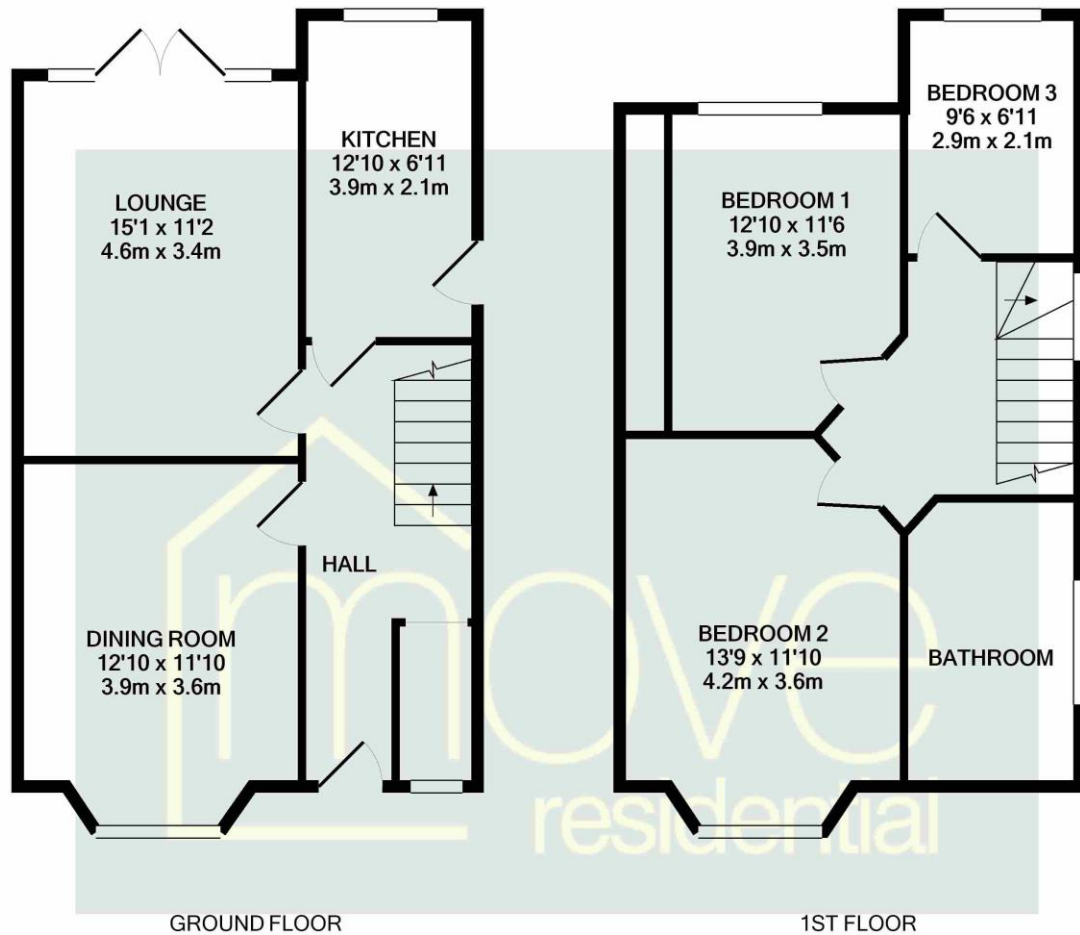
Bedroom One - 13' 5" x 12' 0" (4.08m x 3.65m)

Bedroom Two - 13' 1" x 10' 10" (4.0m x 3.29m)

Bedroom Three - 7' 0" x 8' 10" (2.14m x 2.7m)

Bathroom - 10' 2" x 6' 6" (3.1m x 1.97m)

Floor Plan



Whilst every attempt has been made to ensure the accuracy of the floor plan contained here, measurements of doors, windows, rooms and any other items are approximate and no responsibility is taken for any error, omission, or mis-statement. This plan is for illustrative purposes only and should be used as such by any prospective purchaser. The services, systems and appliances shown have not been tested and no guarantee as to their operability or efficiency can be given
Made with Metropix ©2021

Additional Information

These particulars are thought to be materially correct though their accuracy is not guaranteed and they do not form part of any contract. All measurements are approximate and we have not tested any fitted appliances, electrical or plumbing installation or central heating systems. Floor plans are for illustration purposes only and their accuracy is not guaranteed.