



## Banks Road, West Kirby, Wirral CH48 0RB

- Two Double Bedroom Maisonette Apartment
- Situated in the Prime Location of West Kirby
- Hallway, 17ft Lounge and a Fitted Kitchen
- Close to Amenities and Transport Links
- Offered for Sale with No Onward Chain
- In Need of a Scheme of Modernisation
- Two Bedrooms and Bathroom Set Over Two Floors
- Early Viewing Strongly Recommended



Offers Over £150,000

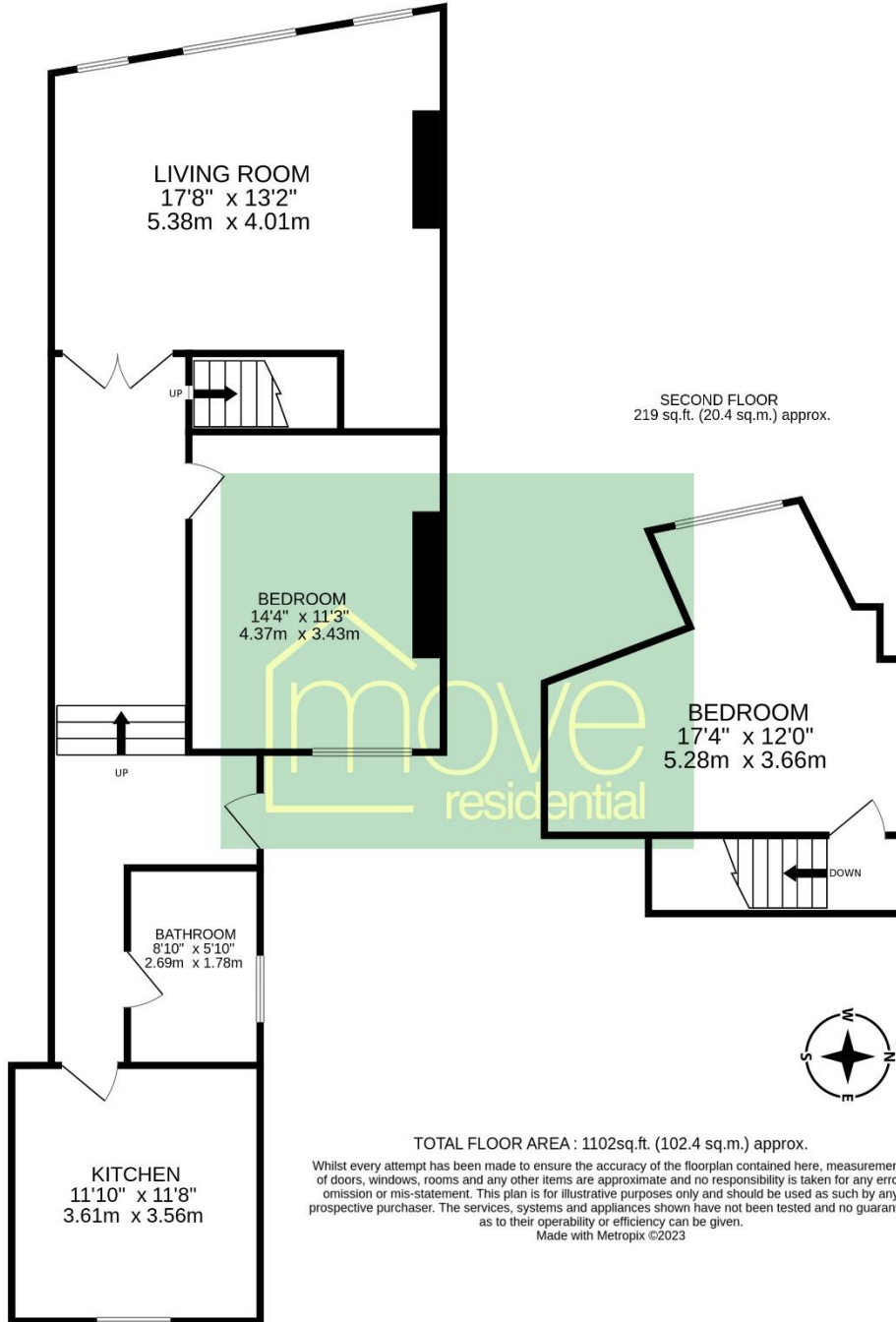






# Floor Plan

FIRST FLOOR  
805 sq.ft. (74.7 sq.m.) approx.



TOTAL FLOOR AREA : 1102sq.ft. (102.4 sq.m.) approx.

Whilst every attempt has been made to ensure the accuracy of the floorplan contained here, measurements of doors, windows, rooms and any other items are approximate and no responsibility is taken for any error, omission or mis-statement. This plan is for illustrative purposes only and should be used as such by any prospective purchaser. The services, systems and appliances shown have not been tested and no guarantee as to their operability or efficiency can be given.  
Made with Metropix ©2023

## **Description**

Offered for sale with no onward chain, Move Residential are delighted to present for sale this spacious two double bedroom first floor maisonette apartment. Situated in the prime location of West Kirby, within walking distance to local amenities and transport links. The property is in need of some renovation work, in brief you have a hallway, generous sized lounge, well fitted kitchen, double bedroom and three piece bathroom. The second floor boasts a second double bedroom. West Kirby is a highly sought after area, there are numerous restaurants, wine bars and designer cafes in the area along with sporting facilities including an indoor swimming pool, squash courts and sports hall in the Concourse, three golf courses and a nearby tennis club. There are sailing facilities on the marine lake and a yacht anchorage on the Dee. This property is also conveniently located for all local transport links including bus routes and the train station for commuting throughout the Wirral or to Liverpool and Chester.

## **Additional Information**

These particulars are thought to be materially correct though their accuracy is not guaranteed and they do not form part of any contract. All measurements are approximate and we have not tested any fitted appliances, electrical or plumbing installation or central heating systems. Floor plans are for illustration purposes only and their accuracy is not guaranteed.