



St. David Road, Prenton, Merseyside CH43 8SW

- Traditional Three Bedroom Semi Detached Property
- Through Lounge & Formal Diner with Parquet Flooring
- Convenient Ground Floor WC
- Three Piece Family Bathroom Suite
- Boasting a Wealth of Style & Character Throughout
- Open Plan Kitchen & Dining Room
- Generously Sized Bedrooms
- Driveway for Parking & Expansive Rear Garden

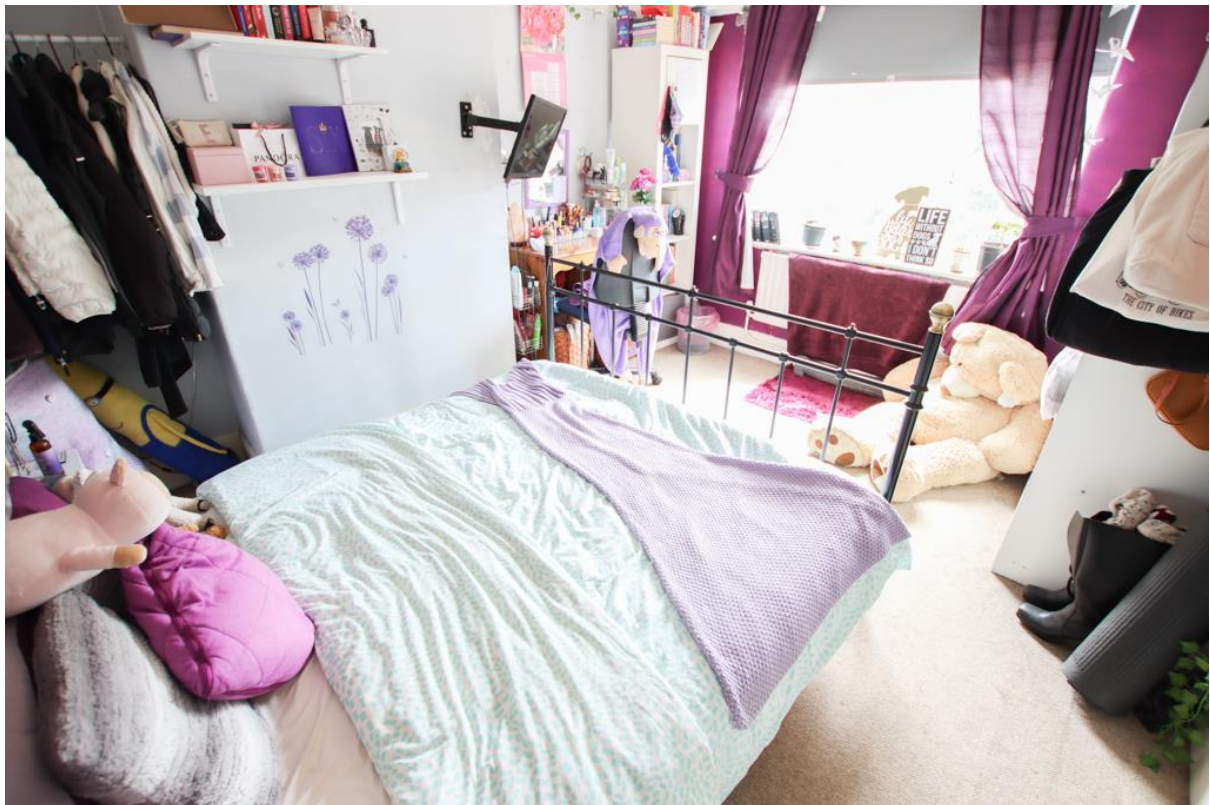


Offers Over £260,000
Freehold













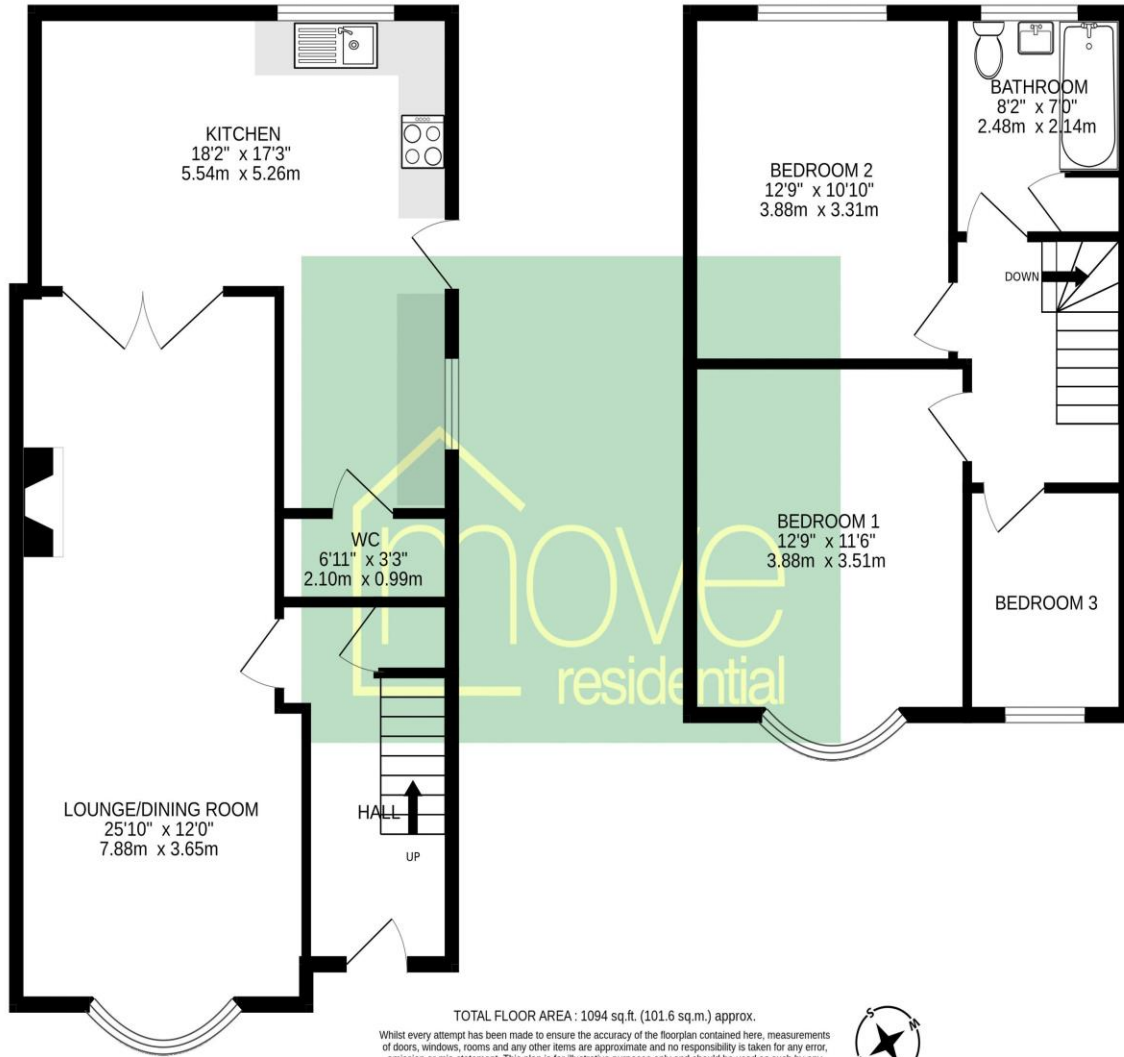
Description

This charming three bedroom semi detached property located on St. David Road in Prenton, CH43, has arrived at the sales market courtesy of appointed agents, Move Residential. Boasting the ultimate in kerb appeal, this traditional property offers generous living proportions and is very well presented throughout - proving to provide a fantastic future home for a very lucky buyer. In brief, the property comprises; a welcoming entrance hallway, a bright and spacious bay fronted family through family lounge and diner with a stunning Parquet flooring and an eye catching feature fireplace, an extended modern kitchen and diner, and a convenient ground floor WC. Ascending to the first floor, you will find two generously sized double bedrooms, a single bedroom and a three piece family bathroom suite. Externally, to the front of the property, off road parking is provided; whilst to the rear, there is an expansive and neatly manicured laid to lawn garden ideal for outdoor recreation. Further benefits to the property includes partial double glazing and gas central heating. Situated within easy reach of amenities, transport links and falling within the catchment area of excellent schools for all age groups, a closer inspection is essential to appreciate this home in full.

Floor Plan

GROUND FLOOR
630 sq.ft. (58.6 sq.m.) approx.

1ST FLOOR
463 sq.ft. (43.0 sq.m.) approx.



Additional Information

These particulars are thought to be materially correct though their accuracy is not guaranteed and they do not form part of any contract. All measurements are approximate and we have not tested any fitted appliances, electrical or plumbing installation or central heating systems. Floor plans are for illustration purposes only and their accuracy is not guaranteed.