



Mostyn House, Grenfell Park, Parkgate CH64 6UJ

- Attractive Two Double Bedroom Town House
- Direct Views Over the Marshlands Towards Wales
- Hallway, W.C, Cloaks and Open Plan Lounge/Kitchen
- Two Allocated Parking Spaces and Courtyard with Views
- Situated in the Picturesque Area of Parkgate
- Well Appointed and Maintained Accommodation
- Two Double Bedrooms, En Suite and Bathroom
- Closer Inspection Strongly Recommended



£325,000













Description

Attractive two double bedroom town house situated in the picturesque area of Parkgate enjoying a private courtyard with direct views over the Marshlands towards Wales. Immaculately presented the accommodation briefly comprises a hallway, W.C, cloakroom and a large lounge opening to a well fitted kitchen. To the first floor you have the master bedroom with fitted wardrobes and en suite shower room, second double bedroom and three piece bathroom. Further benefiting from two allocated parking spaces. Situated within walking distance to amenities and transport links, a closer inspection is essential to appreciate this superb home and its location in full.

Hallway -

W.C -

Cloakroom-

Lounge - 19' 9" x 14' 10" (6.02m x 4.52m)

Kitchen - 13' 0" x 7' 1" (3.96m x 2.16m)

First Floor Landing -

Bedroom One - 14' 9" x 11' 1" (4.49m x 3.38m)

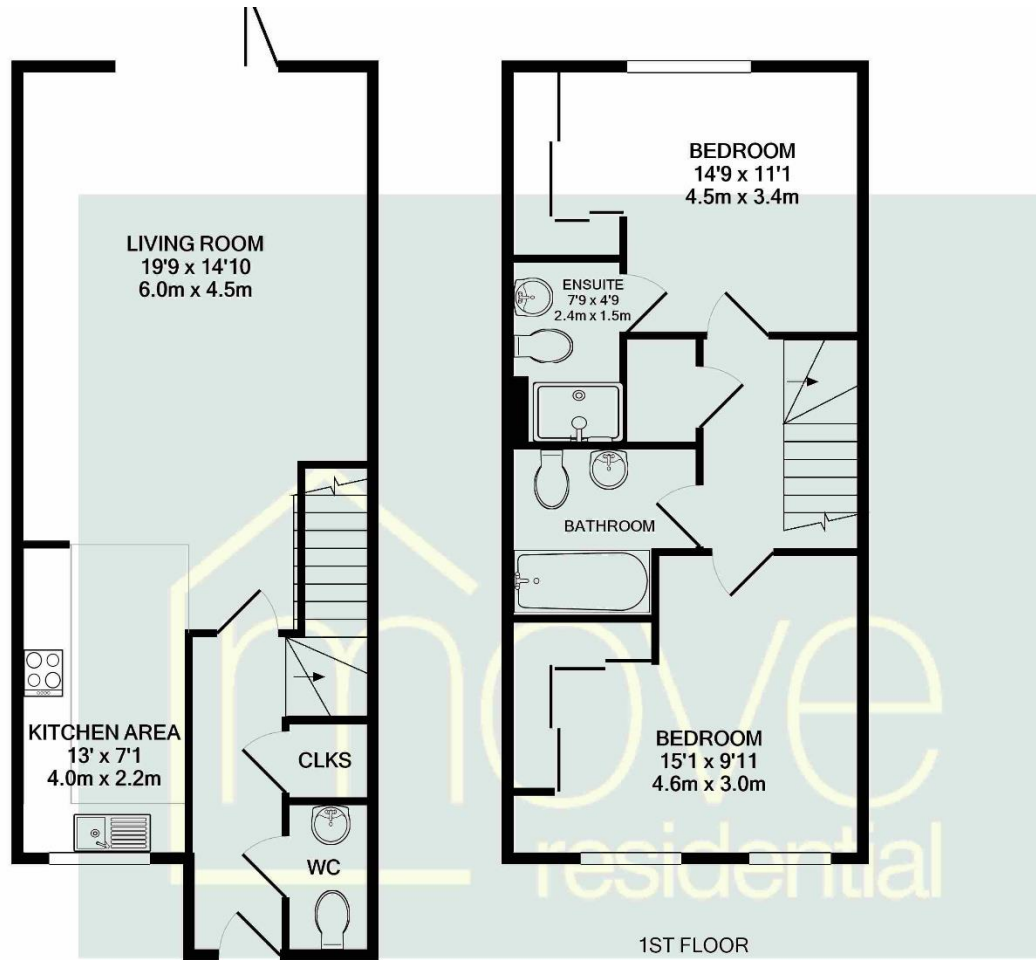
En Suite - 7' 9" x 4' 9" (2.36m x 1.45m)

Bedroom Two - 15' 1" x 9' 11" (4.59m x 3.02m)

Bathroom -

Courtyard -

Floor Plan



GROUND FLOOR

1ST FLOOR

TOTAL APPROX. FLOOR AREA 1108 SQ.FT. (102.9 SQ.M.)

Whilst every attempt has been made to ensure the accuracy of the floor plan contained here, measurements of doors, windows, rooms and any other items are approximate and no responsibility is taken for any error, omission, or mis-statement. This plan is for illustrative purposes only and should be used as such by any prospective purchaser. The services, systems and appliances shown have not been tested and no guarantee as to their operability or efficiency can be given
Made with Metropix ©2021

Additional Information

These particulars are thought to be materially correct though their accuracy is not guaranteed and they do not form part of any contract. All measurements are approximate and we have not tested any fitted appliances, electrical or plumbing installation or central heating systems. Floor plans are for illustration purposes only and their accuracy is not guaranteed.