

CR  
COOK  
Residential

01242 500 259  
www.cookresidential.co.uk



- NO ONWARD CHAIN
- THREE BEDROOM SEMI DETACHED
- BEAUTIFULLY PRESENTED
- EASY REACH OF TOWN CENTRE
- COURTYARD GARDEN
- CONVERTED BASEMENT

Guide Price £290,000

**Dunalley Parade, Cheltenham**

**GL50 4LS**

# Dunalley Parade, Cheltenham

Cook Residential is thrilled to present this exceptional three-bedroom property in the heart of Cheltenham, boasting versatile living spaces and an upstairs family bathroom and benefits from no onward chain.

Nestled within the sought-after locale of Cheltenham, this charming period semi-detached house offers adaptable accommodation.

As you enter the property you are welcomed into the living room with wooden flooring and a feature fire surround.

The modern kitchen provides ample space for appliances and has a breakfast bar in place. To the rear of the kitchen, you have the walk through which lead you to the back room which is wonderful for an additional reception room or office space.

Also through the walkway is the door to the rear garden, which is a small, enclosed courtyard.

The lower level / basement, which is accessed from the kitchen, is a wonderful space for the third bedroom.

Ascending the stairs off the hallway, you'll find two generously proportioned bedrooms and a family bathroom.

Further enhancing its appeal is gas central heating, rear low-maintenance garden and double glazing throughout.



*Passionate About Property...*

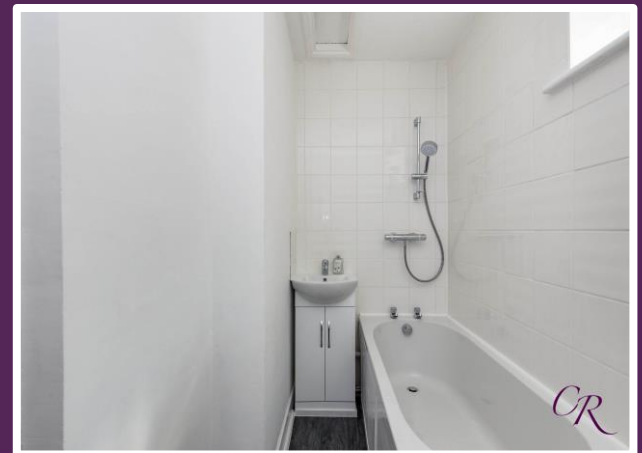


Tenure: Freehold  
Council Tax: Band B

Cheltenham is a beautiful Regency Town, famous for its many festivals including Literature, Music, Science, Jazz and the legendary National Hunt Racing Festival, The Cheltenham Gold Cup. In addition to its festivals, Cheltenham also has an enviable reputation for its excellent schools; some of which are internationally recognised including the renowned Cheltenham College and Cheltenham Ladies College. The Town Centre itself boasts a variety of local and high street shops, eateries, bars and art galleries attracting visitors from far and wide.

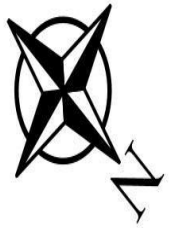
All particulars regarding the property, including Freehold status, are subject to confirmation between the solicitors of the seller and purchaser.

*Passionate About Property...*



**CR**  
**COOK**  
 Residential

01242 500 259  
 www.cookresidential.co.uk



Total floor area 88.9 m<sup>2</sup> (957 sq.ft.) approx

This floor plan is for illustrative purposes only. It is not drawn to scale. Any measurements, floor areas (including any total floor area), openings and orientation are approximate. No details are guaranteed, they cannot be relied upon for any purpose and they do not form part of any agreement. No liability is taken for any error, omission or misstatement. A party must rely upon its own inspection(s). Powered by [www.focalagent.com](http://www.focalagent.com)

