

CR
COOK
Residential

01242 500 259
www.cookresidential.co.uk



- GRADE II LISTED
- STYLISH ONE DOUBLE BEDROOM TOP FLOOR APARTMENT WITH FAR REACHING VIEWS
- MODERN WELL EQUIPTED KITCHEN
- LARGE MODERN BATHROOM
- STUDY AREA

Guide Price £200,000

London Road, Cheltenham

GL52 6DY

London Road, Cheltenham

Cook residential are pleased to bring to the market this fantastic one-bedroom top floor apartment situated in a Grade II listed building on London Road.

This gorgeous top floor home has been finished to a very high standard and is immaculately presented, with views of Cleeve Hill to the North and beautiful gardens to the south.

Benefitting from being on the side of the block, the hallway is flooded with natural light from large windows all around and provides an area to create an office.

The spacious living room showcases original wide floorboards and provides all the area you need for furnishings, while also overlooking the gardens to the front of the building.

The modern fitted kitchen also provides a functional and comfortable dining space as well as plentiful cupboard storage.

The large double bedroom also boasts original floorboards and built-in storage, with views out to the stunning Cleeve Hill.

A surprisingly large and elegant family bathroom completes the interior with further built-in storage.



Passionate About Property...

A neat and easily maintained communal garden can be reached from a rear-access door on the ground floor.

Free and permitted parking is available on the immediate streets surrounding the building. Please see local council website for details.

Pet-friendly

Electric heating

Council Tax Band: A

Tenure: Leasehold 90 years remaining with the option to extend.

All information regarding the property details, including its position on Leasehold, will be confirmed between vendor and purchaser solicitors. All measurements are approximate and for guidance purposes only.

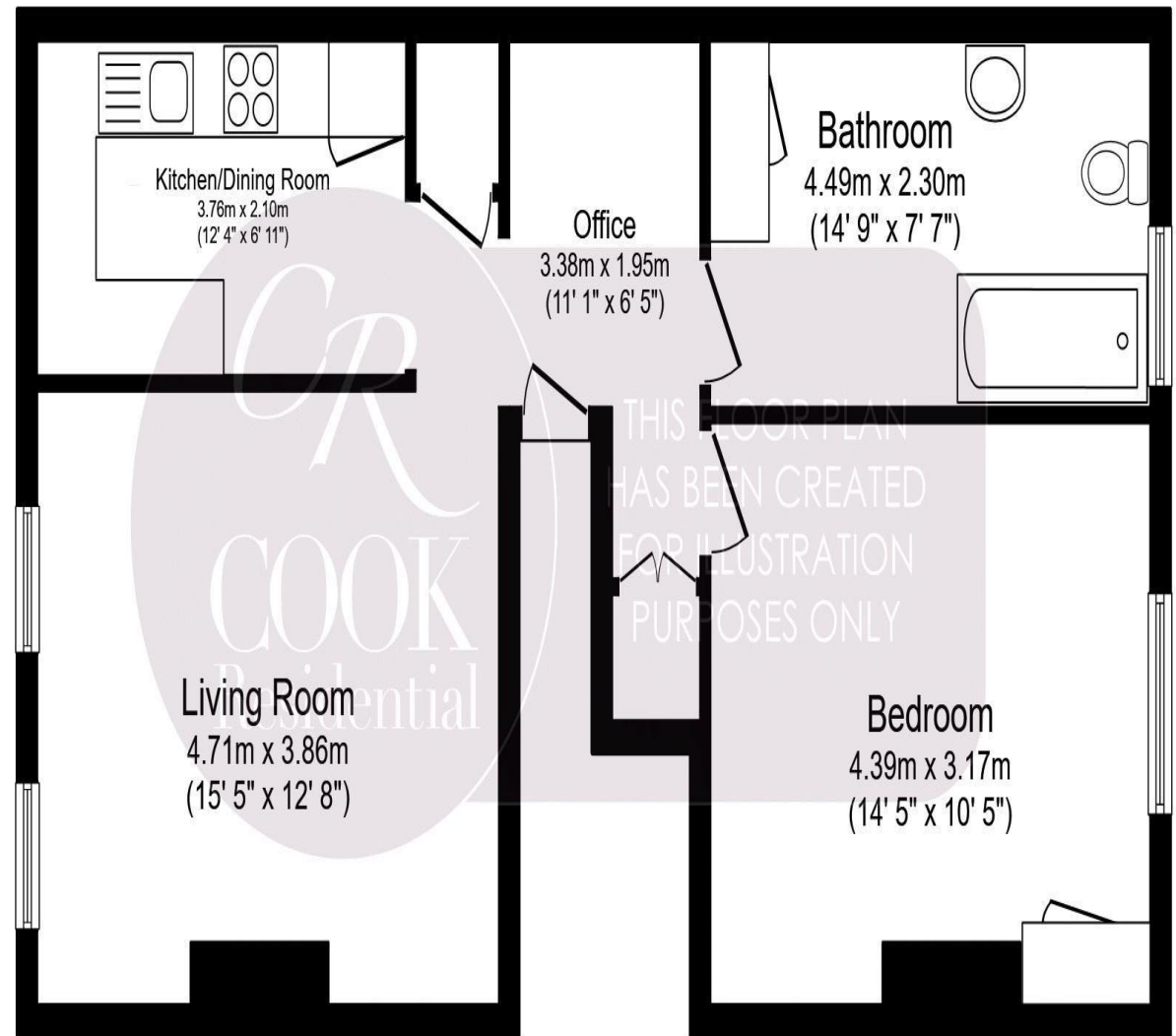
Passionate About Property...



CR COOK Residential

01242 500 259

www.cookresidential.co.uk



Total floor area 62.7 m² (675 sq.ft.) approx

This floor plan is for illustrative purposes only. It is not drawn to scale. Any measurements, floor areas (including any total floor area), openings and orientation are approximate. No details are guaranteed, they cannot be relied upon for any purpose and they do not form part of any agreement. No liability is taken for any error, omission or misstatement. A party must rely upon its own inspection(s). Powered by www.focalagent.com