

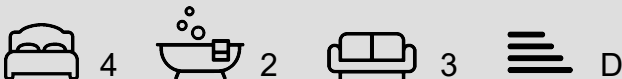


Vicarage Road, Oldbury, B68 8HT

£1,400 Per Calendar Month

Council Tax: B

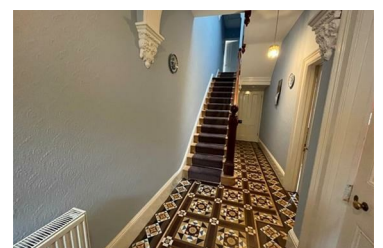
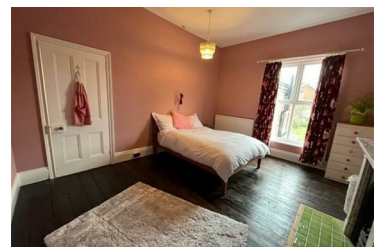
Tenure:



A superbly presented and extremely spacious period home situated in the popular location in Oldbury. This one of a kind property boasts period features throughout combined with spacious contemporary living accommodation complimented with a beautiful rear garden. Part Furnished. Available start of May. EPC Rating - D

The property is set back above street level with a driveway and steps leading up to the entrance, with access to the garage to the frontage.

The property is double glazed throughout and has gas central heating. As you enter the property you are welcomed by a grand entrance hall full of retained features including stained glass, Minton tile flooring and decorative ceiling roses and coving throughout, the front and rear reception rooms are extremely spacious with the traditional high ceilings and feature marble fireplaces, a Parquet style floor leads through to the back of the



- Immaculately Presented Period Family Home
- Retained Period Features Throughout
- Large Garage and Workshop
- Available Start of May
- Four Bedrooms
- Wonderful Rear Garden
- Part Furnished
- EPC Rating - D