



Swinford Avenue, , Leicester, LE2 9RW

- Three Bedroom Townhouse
- Ideal for first time buyers or an Investor opportunity
- Fitted Kitchen with storage cupboards
- Enclosed garden with outbuildings
- 360 Virtual Tour
- Modernisation Project
- Spacious Lounge
- Shower room with a Separate wc
- Local shops, schools and amenities
- Offered to Market with No Upward Chain

Offers Over £185,000



Swinford Avenue, , Leicester, LE2 9RW

DESCRIPTION

Nestled within Swinford Avenue you will find this lovely townhouse waiting to be discovered, which has great potential!

The house comprises of a spacious lounge with double aspect windows, allowing plenty of natural light to flood in, a fitted kitchen with storage cupboards, three well proportioned bedrooms, a shower room with a separate WC and a versatile extended garden room to the rear, which could be utilised as an office or utility room.

Although in need of updating to suit modern tastes, this house presents a fantastic opportunity for those looking to add their personal touch and create a stylish, contemporary home. The property is offered to the market with no upward chain, making the purchasing process smoother and more straightforward.

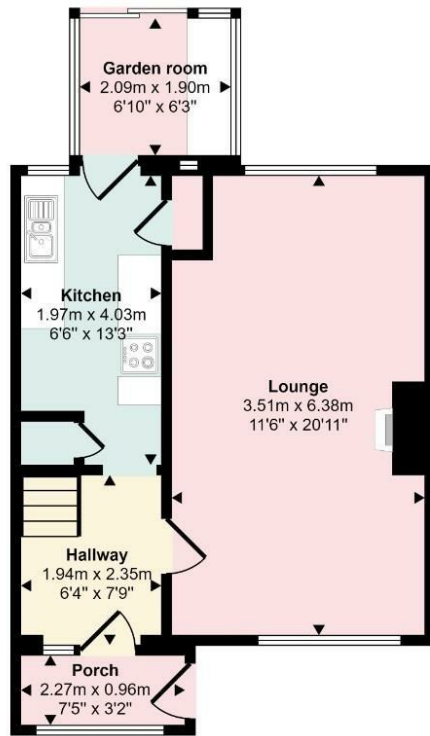
Imagine the possibilities this blank canvas presents - from designing a sleek new kitchen to transforming the living space into a cosy haven for you to unwind and relax..

Don't miss out on the chance to turn this house into your dream home. Contact your local Hunters estate agents Wigston today to arrange a viewing and unlock the potential that this property has to offer!

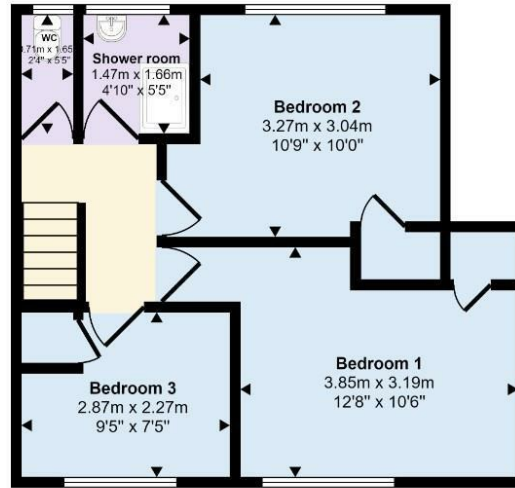




Approx Gross Internal Area
84 sq m / 902 sq ft



Ground Floor
Approx 43 sq m / 465 sq ft



First Floor
Approx 41 sq m / 436 sq ft

This floorplan is only for illustrative purposes and is not to scale. Measurements of rooms, doors, windows, and any items are approximate and no responsibility is taken for any error, omission or mis-statement. Icons of items such as bathroom suites are representations only and may not look like the real items. Made with Made Snappy 360.

Viewings

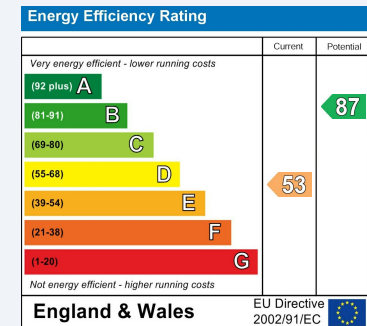
Please contact wigston@hunters.com, if you wish to arrange a viewing appointment for this property or require further information.

Valuations

For a valuation of your property, please email the team with your property details, contact information and the times you are available.

ENERGY PERFORMANCE CERTIFICATE

The energy efficiency rating is a measure of the overall efficacy of a home. The higher the rating the more energy efficient the home is and the lower the fuel bills will be.



These particulars are intended to give a fair and reliable description of the property but no responsibility for any inaccuracy or error can be accepted and do not constitute an offer or contract. We have not tested any services or appliances (including central heating if fitted) referred to in these particulars and the purchasers are advised to satisfy themselves as to the working order and condition. If a property is unoccupied at any time there may be reconnection charges for any switched off/disconnected or drained services or appliances - All measurements are approximate.

THINKING OF SELLING? If you are thinking of selling your home or just curious to discover the value of your property, Hunters would be pleased to provide free, no obligation sales and marketing advice. Even if your home is outside the area covered by our local offices we can arrange a Market Appraisal through our national network of Hunters estate agents.



19 Leicester Road, Wigston, Leicestershire, LE18 1NR
Tel: 0116 366 0660 Email: wigston@hunters.com <https://www.hunters.com>

