



Leicester Road, , Wigston, LE18 1JT

- TRADITIONAL STYLE SEMI-DETACHED HOME WITHIN THE HEART OF WIGSTON
- FAMILY SHOWER WITH DOWNSTAIRS WC
- CENTRAL WIGSTON LOCATION & CLOSE BY TO LOCAL SHOPS, PARKS, SCHOOLS AND AMENITIES
- EXCELLENT ROAD LINKS TO THE CITY, MOTORWAYS AND SURROUNDING AREAS
- 360 VIRTUAL TOUR
- THREE BEDROOMS
- OPEN PLAN LOUNGE-DINING ROOM WITH ADDITIONAL SUN ROOM
- DRIVEWAY AND GARAGE
- GENEROUS REAR GARDEN WITH SCOPE TO EXTEND
- OFFERED TO MARKET WITH NO UPWARD CHAIN

£275,000



Leicester Road, , Wigston, LE18 1JT

DESCRIPTION

Welcome to Leicester Road, Wigston - a charming semi-detached house with great potential! This property boasts an open plan lounge-dining room with an additional sun room to the rear, three bedrooms, and a fitted shower room, providing ample space for a family or those who love to entertain.

The open plan lounge-dining room offers a versatile space for relaxing and hosting gatherings, perfect for creating lasting memories with loved ones and with the added benefit of a sun room to the rear, opening onto the generous garden.

This property is a remodelling project waiting to be transformed into your dream home, with the scope to extend and add your personal touch. Imagine the possibilities of customising this space to suit your lifestyle and needs - the potential is truly exciting!

Located in the heart of Wigston, you'll enjoy excellent road links to the city, motorways, and surrounding areas, making commuting a breeze. The convenience of having a driveway and garage adds to the appeal of this property, providing secure parking and extra storage space.

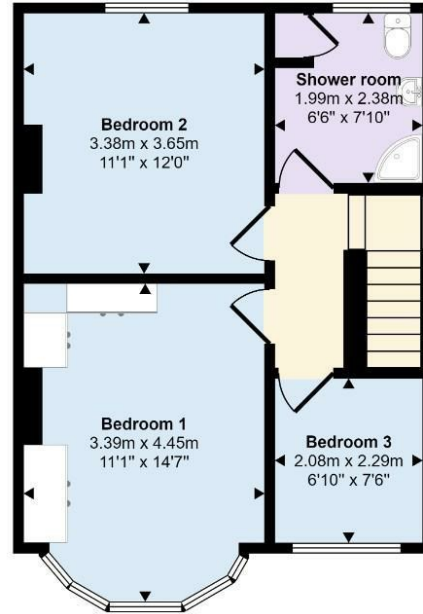
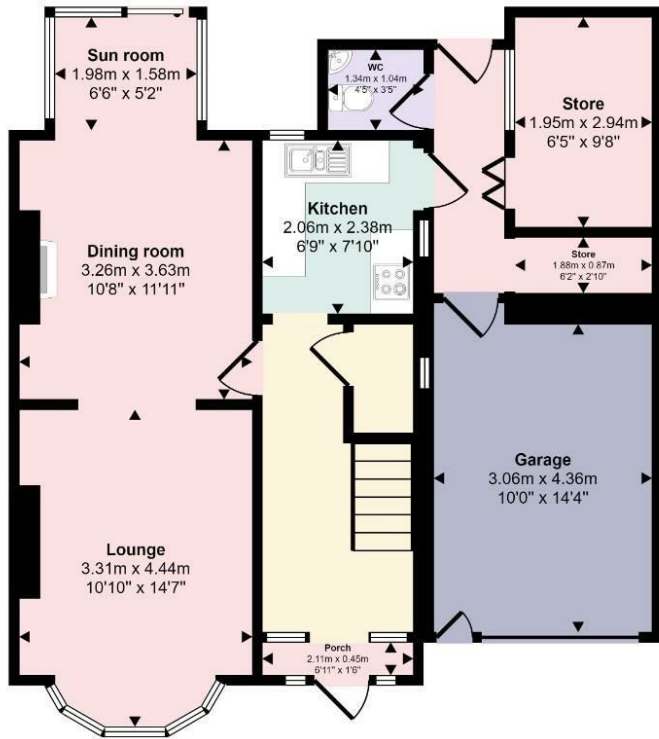
Don't miss the opportunity to explore this property through the 360 virtual tour, allowing you to envision the endless possibilities that this home has to offer. Embrace the chance to create a space that reflects your style and aspirations - Leicester Road is ready to welcome you home!

To find out more, contact your local Hunters estate agents Wigston today! to arrange your accompanied viewing of this family home.





Approx Gross Internal Area
120 sq m / 1290 sq ft



This floorplan is only for illustrative purposes and is not to scale. Measurements of rooms, doors, windows, and any items are approximate and no responsibility is taken for any error, omission or mis-statement. Icons of items such as bathroom suites are representations only and may not look like the real items. Made with Made Snappy 360.

Viewings

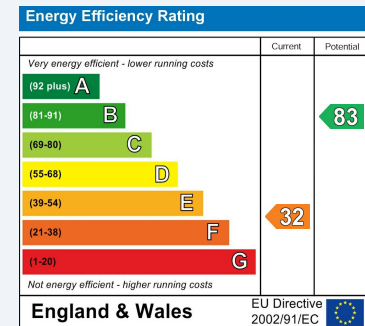
Please contact wigston@hunters.com, if you wish to arrange a viewing appointment for this property or require further information.

Valuations

For a valuation of your property, please email the team with your property details, contact information and the times you are available.

ENERGY PERFORMANCE CERTIFICATE

The energy efficiency rating is a measure of the overall efficacy of a home. The higher the rating the more energy efficient the home is and the lower the fuel bills will be.



These particulars are intended to give a fair and reliable description of the property but no responsibility for any inaccuracy or error can be accepted and do not constitute an offer or contract. We have not tested any services or appliances (including central heating if fitted) referred to in these particulars and the purchasers are advised to satisfy themselves as to the working order and condition. If a property is unoccupied at any time there may be reconnection charges for any switched off/disconnected or drained services or appliances - All measurements are approximate.

THINKING OF SELLING? If you are thinking of selling your home or just curious to discover the value of your property, Hunters would be pleased to provide free, no obligation sales and marketing advice. Even if your home is outside the area covered by our local offices we can arrange a Market Appraisal through our national network of Hunters estate agents.



19 Leicester Road, Wigston, Leicestershire, LE18 1NR
Tel: 0116 366 0660 Email: wigston@hunters.com <https://www.hunters.com>

