



Leicester Road, Glen Parva, Leicester, LE2 9HF

- Fabulously Presented Four Bedroom, Extended Family Home
- Spacious Lounge with views over the rear garden
- Modern Family bathroom
- Integral garage and generous driveway providing ample off road parking spaces
- Excellent road links to the City, Fosse Park and Motorways
- Open plan fitted Kitchen-Diner with Bi-fold doors to the garden patio
- Separate Dining room
- Ensuite to Bedroom one
- Downstairs shower room
- Boarded attic space

Offers Over £400,000



Leicester Road, Glen Parva, Leicester, LE2 9HF

DESCRIPTION

Situated on the sought after Leicester Road of Glen Parva is this superbly presented semi-detached home, which offers a perfect blend of space and comfort for a growing or extended family. Boasting two spacious reception rooms, four bedrooms, and three bathrooms, this property provides ample living space for all your needs.

One of the standout features of this home is the parking provision for up to seven vehicles, ensuring convenience for you and your guests. The substantial and extended layout of the house is complemented by a very generous rear garden, ideal for outdoor activities and relaxation. Additionally, the presence of a separate vegetable garden offers a wonderful opportunity for those with green fingers to indulge in some homegrown produce to rustle up some delicious meals in the modern fitted kitchen-diner.

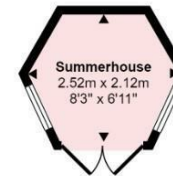
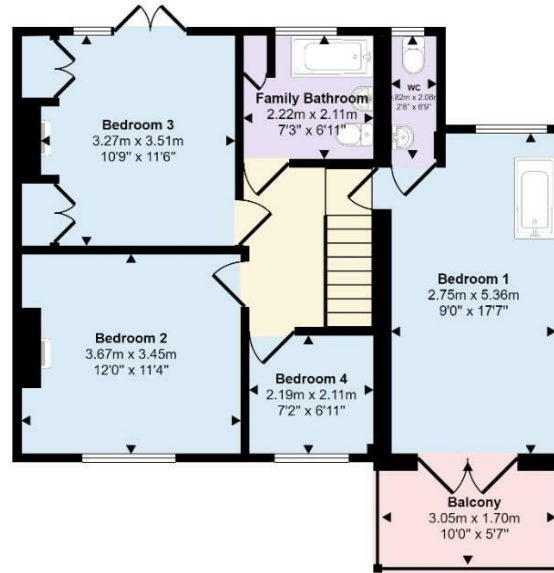
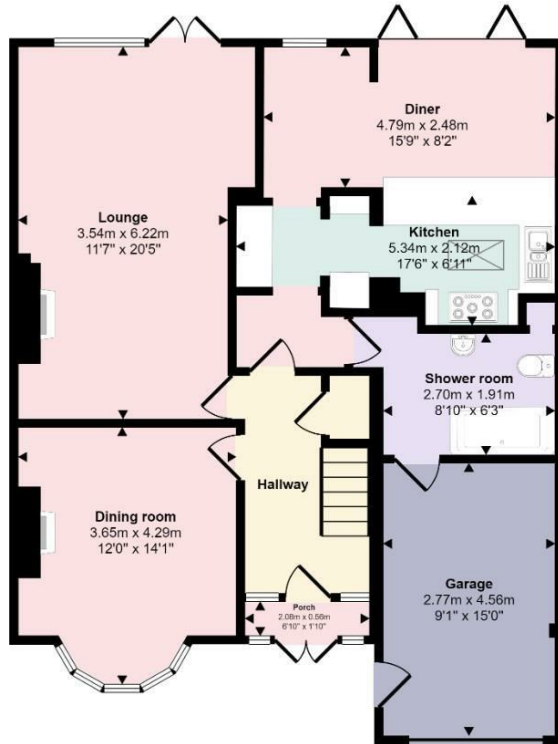
Conveniently located, this property provides easy access to the city, local schools, parks, and public transport, making daily commutes and school runs a breeze. Whether you're looking for a peaceful retreat from the city hustle or a spacious home to accommodate your growing family, this property ticks all the boxes.

Don't miss out on the chance to own this fantastic family home in Glen Parva - to find out more about this amazing family home, contact your local Hunters estate agents Wigston to book a viewing today and envision the endless possibilities this property has to offer for your next home.





Approx Gross Internal Area
158 sq m / 1702 sq ft



Outbuilding
Approx 4 sq m / 45 sq ft

This floorplan is only for illustrative purposes and is not to scale. Measurements of rooms, doors, windows, and any items are approximate and no responsibility is taken for any error, omission or mis-statement. Icons of items such as bathroom suites are representations only and may not look like the real items. Made with Made Snappy 360.

Viewings

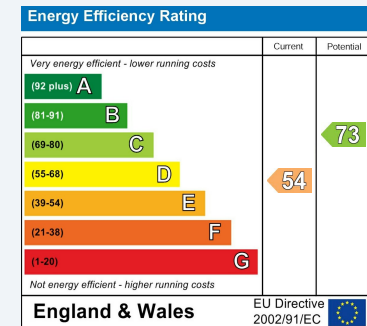
Please contact wigston@hunters.com, if you wish to arrange a viewing appointment for this property or require further information.

Valuations

For a valuation of your property, please email the team with your property details, contact information and the times you are available.

ENERGY PERFORMANCE CERTIFICATE

The energy efficiency rating is a measure of the overall efficacy of a home. The higher the rating the more energy efficient the home is and the lower the fuel bills will be.



These particulars are intended to give a fair and reliable description of the property but no responsibility for any inaccuracy or error can be accepted and do not constitute an offer or contract. We have not tested any services or appliances (including central heating if fitted) referred to in these particulars and the purchasers are advised to satisfy themselves as to the working order and condition. If a property is unoccupied at any time there may be reconnection charges for any switched off/disconnected or drained services or appliances - All measurements are approximate.

THINKING OF SELLING? If you are thinking of selling your home or just curious to discover the value of your property, Hunters would be pleased to provide free, no obligation sales and marketing advice. Even if your home is outside the area covered by our local offices we can arrange a Market Appraisal through our national network of Hunters estate agents.

