

Ebchester Road, , Leicester, LE2 9LR

- RECENTLY EXTENDED AND REFURBISHED TO AN EXCEPTIONAL STANDARD
- ENSUITE TO MASTER BEDROOM AND NEWLEY FITTED BATHROOM SUITE
- NEW FITTED KITCHEN-DINER
- IDEAL FAMILY OR DESIGNED FOR A POSSIBLE HMO
- 360 VIRTUAL TOUR
- FOUR DOUBLE BEDROOMS
- SPACIOUS LIVING ROOM
- BLOCK PAVED GARDEN
- PRESENTED IN READY TO MOVE IN CONDITION
- GREAT LOCATION FOR ACCESS TO THE CITY, FOSSE PARK AND MOTORWAYS

Offers Over £260,000



Ebchester Road , Leicester, LE2 9LR

DESCRIPTION

Welcome to this stunning property on Ebchester Road in Leicester! This end terrace house boasts a spacious reception room, four double bedrooms, a newly installed bathroom and en-suite shower room, making it an ideal space for a growing family or a possible HMO rental opportunity.

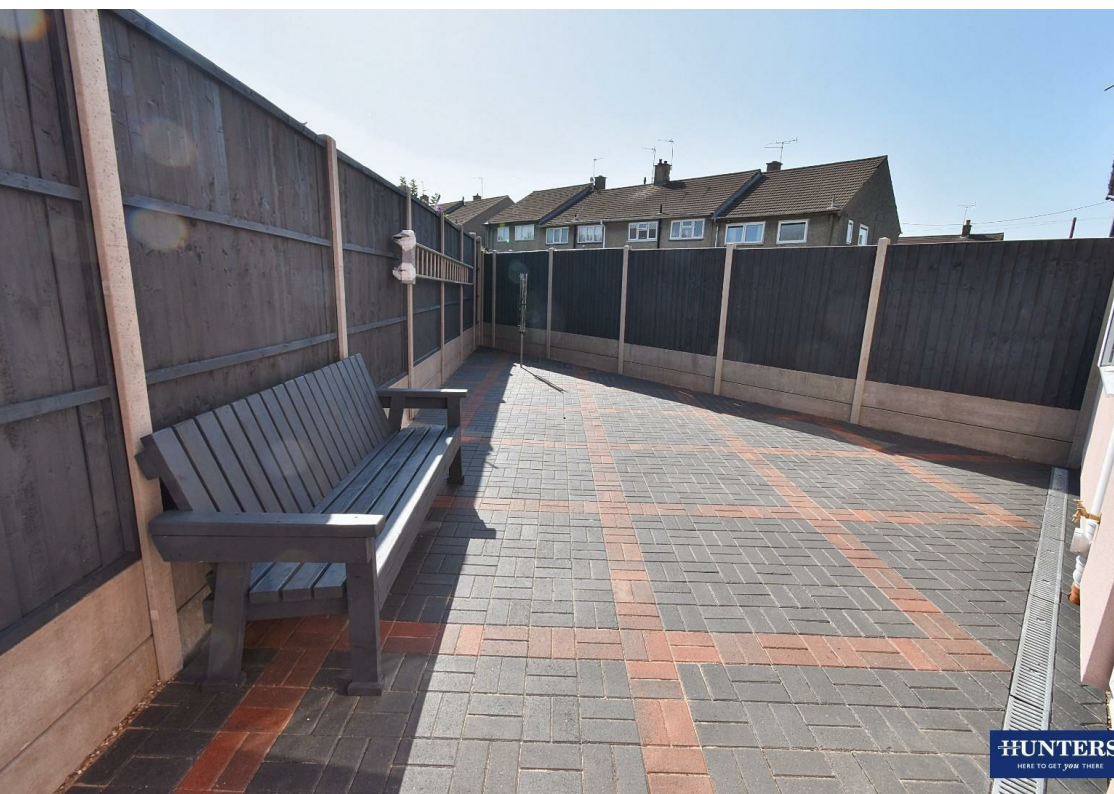
Recently extended and refurbished to an exceptional standard, this property is a true gem. With rewired electrics and new central heating, you can rest assured that this home is not only beautiful but will have a modern and contemporary living style for years to come.

Presented in a ready-to-move-in condition, you can envision yourself living in this charming abode without the hassle of renovations or updates. The 360 virtual tour allows you to explore every corner of this lovely home from the comfort of your own sofa.

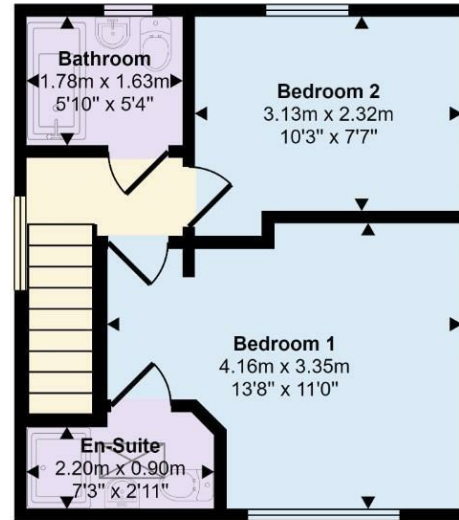
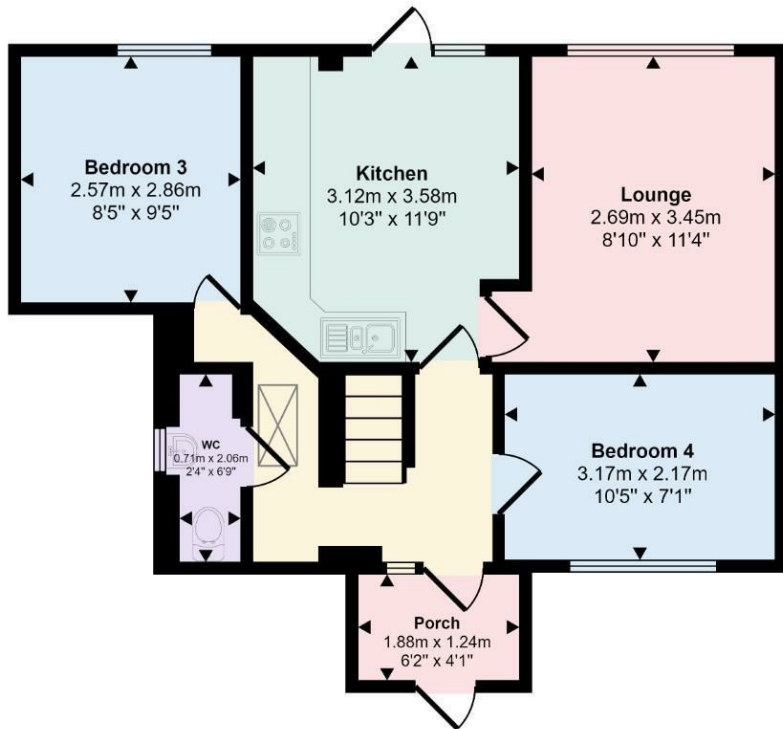
Don't miss out on the chance to make this property your own. Whether you're looking for a family home or an investment opportunity, this house on Ebchester Road has it all.

Call your local Hunters estate agents Wigston to book a viewing today and step into your future!





Approx Gross Internal Area
78 sq m / 838 sq ft



This floorplan is only for illustrative purposes and is not to scale. Measurements of rooms, doors, windows, and any items are approximate and no responsibility is taken for any error, omission or mis-statement. Icons of items such as bathroom suites are representations only and may not look like the real items. Made with Made Snappy 360.

Viewings

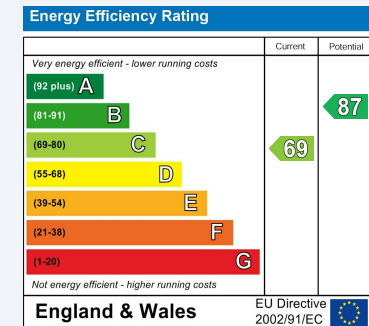
Please contact wigston@hunters.com, if you wish to arrange a viewing appointment for this property or require further information.

Valuations

For a valuation of your property, please email the team with your property details, contact information and the times you are available.

ENERGY PERFORMANCE CERTIFICATE

The energy efficiency rating is a measure of the overall efficacy of a home. The higher the rating the more energy efficient the home is and the lower the fuel bills will be.



These particulars are intended to give a fair and reliable description of the property but no responsibility for any inaccuracy or error can be accepted and do not constitute an offer or contract. We have not tested any services or appliances (including central heating if fitted) referred to in these particulars and the purchasers are advised to satisfy themselves as to the working order and condition. If a property is unoccupied at any time there may be reconnection charges for any switched off/disconnected or drained services or appliances - All measurements are approximate.

THINKING OF SELLING? If you are thinking of selling your home or just curious to discover the value of your property, Hunters would be pleased to provide free, no obligation sales and marketing advice. Even if your home is outside the area covered by our local offices we can arrange a Market Appraisal through our national network of Hunters estate agents.



19 Leicester Road, Wigston, Leicestershire, LE18 1NR
Tel: 0116 366 0660 Email: wigston@hunters.com <https://www.hunters.com>

