

Timber Street, , Wigston, LE18 4QG

- No Upward Chain
- Two double bedrooms
- Galley style kitchen
- Enclosed garden with outbuildings
- Excellent public transport links
- Victorian style palisade terrace
- Three piece bathroom suite
- Living room and separate dining room
- Local countryside, shops and amenities
- 360 Virtual Tour

Offers In The Region Of £170,000



Timber Street, , Wigston, LE18 4QG

DESCRIPTION

Nestled within the Timber Street of Wigston, this Victorian mid-terrace home is a delightful find for those seeking a cosy home. Boasting two generous double bedrooms, two inviting reception rooms, and a quaint galley style kitchen, this property offers a comfortable living space perfect for first-time buyers or savvy investors.

This lovely home retains some of the original features and has an inviting and warm atmosphere, making it an ideal retreat after a long day. The property's layout is thoughtfully designed to provide ample space for relaxation and entertainment, ensuring a harmonious balance between comfort and functionality.

One of the standout features of this property is the absence of an upward chain, offering a seamless and hassle-free buying process for prospective homeowners. This, coupled with its prime location near local countryside, schools, shops, and amenities, makes it a highly sought-after opportunity in the housing market.

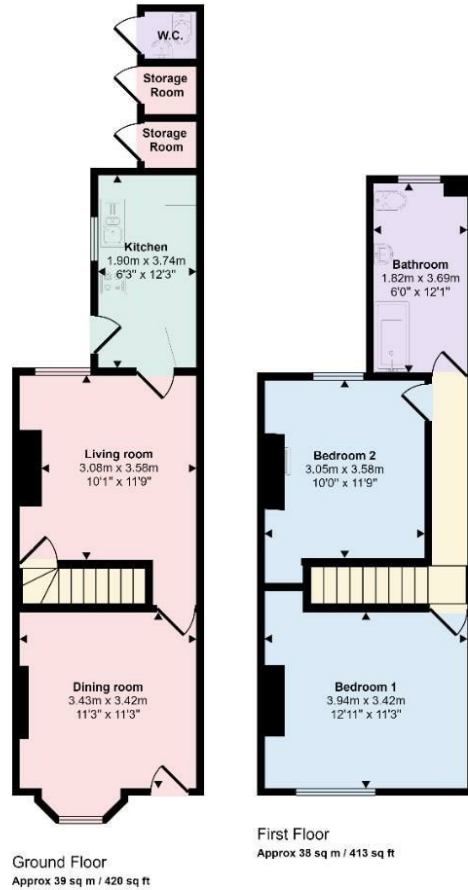
Whether you're looking to take your first step onto the property ladder or expand your investment portfolio, this charming Victorian palisade home on Timber Street presents a promising canvas for you to create your dream living space.

To find out more take a look at the 360 Virtual tour and contact your local Hunters estate agents Wigston today, to arrange you viewing.





Approx Gross Internal Area
77 sq m / 833 sq ft



This floorplan is only for illustrative purposes and is not to scale. Measurements of rooms, doors, windows, and any items are approximate and no responsibility is taken for any error, omission or mis-statement. Icons of items such as bathroom suites are representations only and may not look like the real items. Made with Made Snappy 360.

Viewings

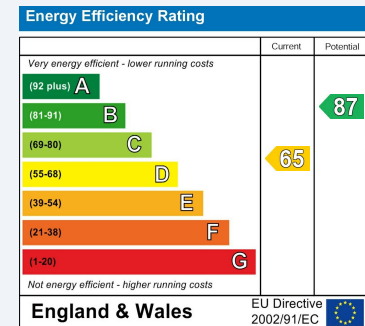
Please contact wigston@hunters.com, if you wish to arrange a viewing appointment for this property or require further information.

Valuations

For a valuation of your property, please email the team with your property details, contact information and the times you are available.

ENERGY PERFORMANCE CERTIFICATE

The energy efficiency rating is a measure of the overall efficacy of a home. The higher the rating the more energy efficient the home is and the lower the fuel bills will be.



These particulars are intended to give a fair and reliable description of the property but no responsibility for any inaccuracy or error can be accepted and do not constitute an offer or contract. We have not tested any services or appliances (including central heating if fitted) referred to in these particulars and the purchasers are advised to satisfy themselves as to the working order and condition. If a property is unoccupied at any time there may be reconnection charges for any switched off/disconnected or drained services or appliances - All measurements are approximate.

THINKING OF SELLING? If you are thinking of selling your home or just curious to discover the value of your property, Hunters would be pleased to provide free, no obligation sales and marketing advice. Even if your home is outside the area covered by our local offices we can arrange a Market Appraisal through our national network of Hunters estate agents.



19 Leicester Road, Wigston, Leicestershire, LE18 1NR
Tel: 0116 366 0660 Email: wigston@hunters.com <https://www.hunters.com>

