



Little Glen Road, Glen Parva, Leicester, LE2 9TS

- Extended semi-detached home
- Fitted Kitchen and utility room
- Three well appointed bedrooms
- Tranquil and beautiful garden to the rear
- Presented in ready to move in condition
- Open plan Lounge-dining room
- Shower room to the ground floor
- Three piece family bathroom suite
- Driveway and integral garage
- 360 Virtual Tour

£320,000



Little Glen Road, Glen Parva, Leicester, LE2 9TS

DESCRIPTION

Nestled in the charming area of Little Glen Road, Glen Parva, this extended semi-detached house is a true gem waiting to be discovered. Boasting two reception rooms, three bedrooms, and two bathrooms, this property offers ample space for comfortable living.

As you step inside, you are greeted by an inviting open fireplace in the living room, perfect for cosy evenings with loved ones. The open plan kitchen-diner-lounge is not only practical but also creates a seamless flow throughout the ground floor, ideal for entertaining guests or keeping an eye on the little ones.

The property is immaculately presented, in a ready-to-move-in condition, saving you the hassle of any immediate renovations. With parking space for up to four vehicles and a generous integral garage space, convenience is at the forefront of this home.

One of the highlights of this property is the beautiful and well-stocked garden space, providing a tranquil escape from the hustle and bustle of everyday life. Whether you have a green thumb or simply enjoy relaxing outdoors, this garden is sure to impress.

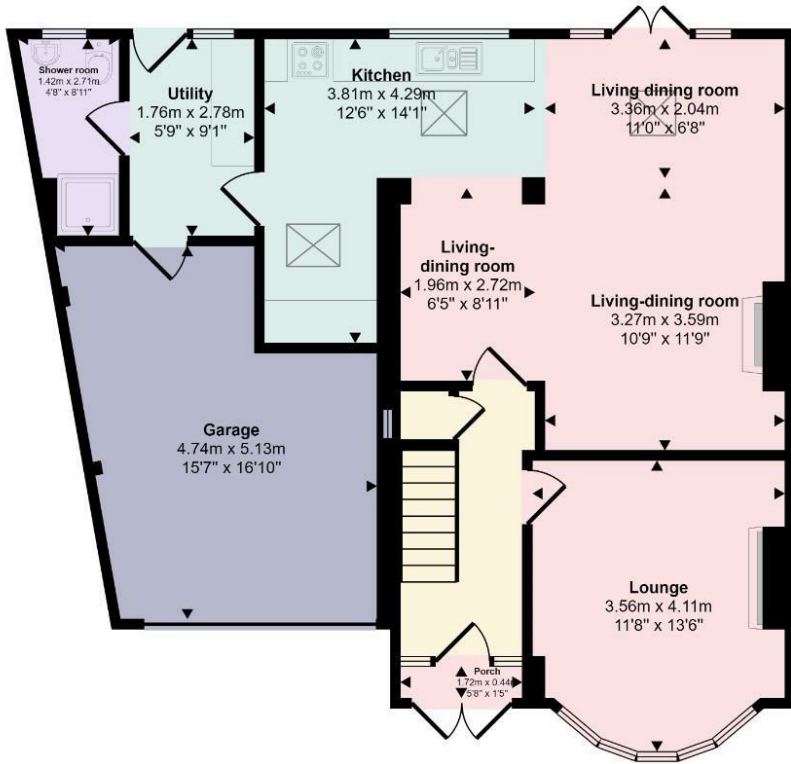
In conclusion, this property is an ideal family home or perfect for those who love to entertain. With its spacious interior, charming features, and peaceful garden, this house on Little Glen Road is a superb find that offers both comfort and style.

To find out more about this stunning home, contact your local Hunters estate agents Wigston today, to arrange your viewing.

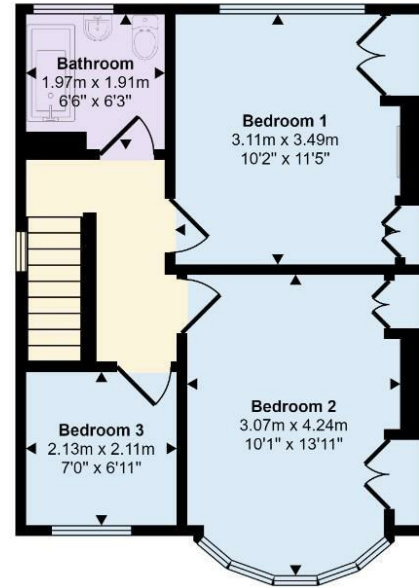




Approx Gross Internal Area
132 sq m / 1420 sq ft



Ground Floor
Approx 90 sq m / 968 sq ft



First Floor
Approx 42 sq m / 452 sq ft

This floorplan is only for illustrative purposes and is not to scale. Measurements of rooms, doors, windows, and any items are approximate and no responsibility is taken for any error, omission or mis-statement. Icons of items such as bathroom suites are representations only and may not look like the real items. Made with Made Snappy 360.

Viewings

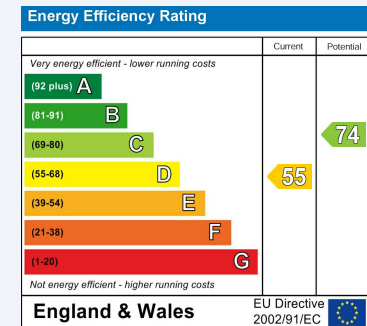
Please contact wigston@hunters.com, if you wish to arrange a viewing appointment for this property or require further information.

Valuations

For a valuation of your property, please email the team with your property details, contact information and the times you are available.

ENERGY PERFORMANCE CERTIFICATE

The energy efficiency rating is a measure of the overall efficacy of a home. The higher the rating the more energy efficient the home is and the lower the fuel bills will be.



These particulars are intended to give a fair and reliable description of the property but no responsibility for any inaccuracy or error can be accepted and do not constitute an offer or contract. We have not tested any services or appliances (including central heating if fitted) referred to in these particulars and the purchasers are advised to satisfy themselves as to the working order and condition. If a property is unoccupied at any time there may be reconnection charges for any switched off/disconnected or drained services or appliances - All measurements are approximate.

THINKING OF SELLING? If you are thinking of selling your home or just curious to discover the value of your property, Hunters would be pleased to provide free, no obligation sales and marketing advice. Even if your home is outside the area covered by our local offices we can arrange a Market Appraisal through our national network of Hunters estate agents.

