



Archery Close, Countesthorpe, Leicester, LE8 5QB

- NO UPWARD CHAIN
- LIVING ROOM
- KITCHEN
- GARAGE AND DRIVEWAY
- POPULAR VILLAGE
- THREE BEDROOM SEMI-DETACHED HOME
- DINING ROOM
- CONSERVATORY
- CUL-DE-SAC LOCATION
- GAS CENTRAL HEATING AND DOUBLE GLAZING

Offers In The Region Of £260,000



Archery Close, Countesthorpe, Leicester, LE8 5QB

DESCRIPTION

Offered to market with no upward chain is this traditional style semi-detached house located within a quiet cul-de-sac in the sought after south Leicester village of Countesthorpe. This property boasts two reception rooms, perfect for entertaining guests or simply relaxing with your loved ones. With three cosy bedrooms, there's plenty of space for the whole family to unwind and make themselves at home.

The house features a well-maintained bathroom, ensuring convenience and comfort for your daily routines. One of the highlights of this property is the parking space available with a private driveway and separate garage, providing ample room for both residents and visitors.

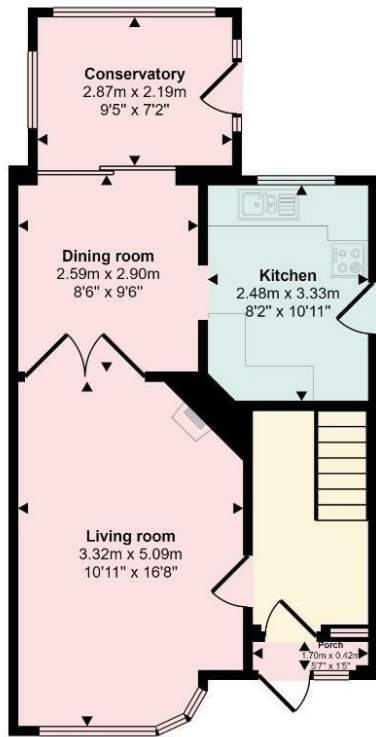
Situated in a peaceful neighbourhood, this house offers a tranquil retreat from the hustle and bustle of city life. Countesthorpe's charming surroundings and community spirit make it an ideal location for those seeking a harmonious blend of urban convenience and suburban tranquillity.

Don't miss out on the opportunity to make this lovely house your new home. Contact your local Hunters estate agents today to arrange a viewing and discover the endless possibilities that this property has to offer.

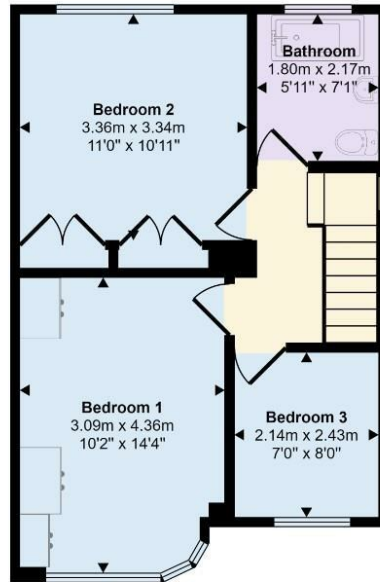




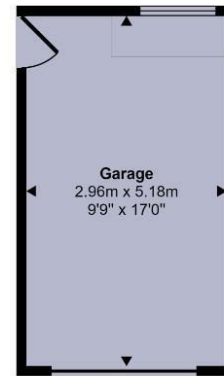
Approx Gross Internal Area
104 sq m / 1123 sq ft



Ground Floor
Approx 47 sq m / 507 sq ft



First Floor
Approx 42 sq m / 450 sq ft



Garage
Approx 15 sq m / 165 sq ft

This floorplan is only for illustrative purposes and is not to scale. Measurements of rooms, doors, windows, and any items are approximate and no responsibility is taken for any error, omission or mis-statement. Icons of items such as bathroom suites are representations only and may not look like the real items. Made with Made Snappy 360.

Viewings

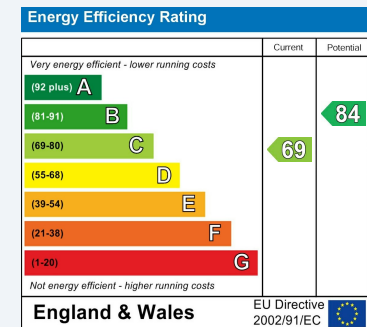
Please contact wigston@hunters.com, if you wish to arrange a viewing appointment for this property or require further information.

Valuations

For a valuation of your property, please email the team with your property details, contact information and the times you are available.

ENERGY PERFORMANCE CERTIFICATE

The energy efficiency rating is a measure of the overall efficacy of a home. The higher the rating the more energy efficient the home is and the lower the fuel bills will be.



These particulars are intended to give a fair and reliable description of the property but no responsibility for any inaccuracy or error can be accepted and do not constitute an offer or contract. We have not tested any services or appliances (including central heating if fitted) referred to in these particulars and the purchasers are advised to satisfy themselves as to the working order and condition. If a property is unoccupied at any time there may be reconnection charges for any switched off/disconnected or drained services or appliances - All measurements are approximate.

THINKING OF SELLING? If you are thinking of selling your home or just curious to discover the value of your property, Hunters would be pleased to provide free, no obligation sales and marketing advice. Even if your home is outside the area covered by our local offices we can arrange a Market Appraisal through our national network of Hunters estate agents.



19 Leicester Road, Wigston, Leicestershire, LE18 1NR
Tel: 0116 366 0660 Email: wigston@hunters.com <https://www.hunters.com>

