



Foundry Walk, Thrapston  
**£340,000 Freehold**

**Sharman  
Quinney**



# Key Features



- Attractive Position
- Detached Home - Four Bedroom home arranged over three floors - Flexible Living
- Ensuite to Master, First Floor Family bathroom, Ground Floor Cloaks/Guest/W.c.
- Updated Kitchen and Matching Utility
- Double Glazing /Gas Central Heating

The popular Market town of Thrapston offers many facilities to its residents including supermarket, shops, pubs, schools, doctors and dentists and is conveniently located for rural and riverside walks. With wider retail facilities available 9.3 miles from the Town centre at "Rushden Lakes" development just a short drive away and provides and a Waitrose store. Other entertainment amenities also include a multi-screen cinema and several restaurants.

Thrapston is conveniently located for the major road network links of the A14 and A45 leading to the M1 and M6 and train stations in Kettering, Corby, Huntingdon and Peterborough allow access to the capital within the hour.



Contact Sharman Quinney to arrange a viewing today to view this well-presented family home.

#### Measurements

Ground Floor

Entrance Hallway -

Guest Cloakroom/W.c.

Kitchen/Diner - 17' 0" x 9' 8" (5.18m x 3.00m)

Utility- 5' 8" x 5' 6" (1.78m x 1.73m)

Lounge - 10' 3" x 17' 0" (3.14m x 5.19m)

1st Floor

Master Bedroom - 10' 4" x 10' 10" (3.20m x 3.08m)

to double fitted wardrobe

En-Suite - Comprising double shower enclosure, close coupled w/c.

Bedroom Two - 10' 0" x 10' 5" (3.06m x 3.22m)

Family Bathroom - Three-piece suite.

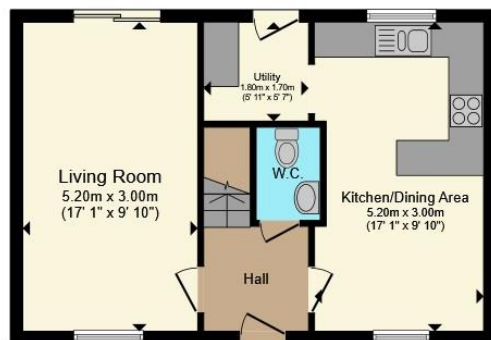
2nd Floor

Bedroom Three - 13' 0" x 10' 10" (3.98m x 3.08m)

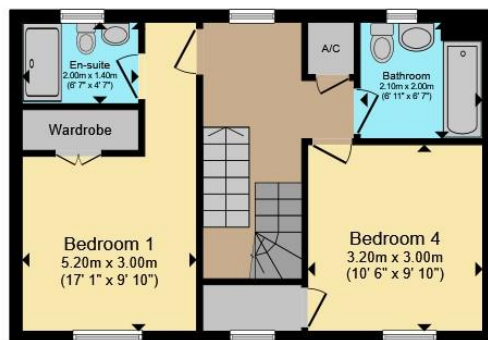
Bedroom Four - 11' 2" x 10' 6" (3.44m x 3.23m)



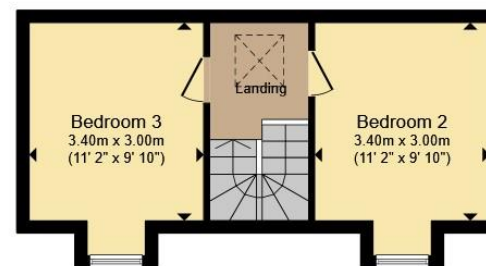




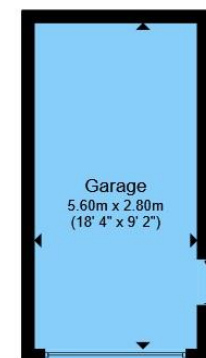
**Ground Floor**



**First Floor**



**Second Floor**



**Garage**

Total floor area 127.4 m<sup>2</sup> (1,372 sq.ft.) approx

This floor plan is for illustrative purposes only. It is not drawn to scale. Any measurements, floor areas (including any total floor area), openings and orientation are approximate. No details are guaranteed, they cannot be relied upon for any purpose and they do not form part of any agreement. No liability is taken for any error, omission or misstatement. A party must rely upon its own inspection(s). Powered by [www.propertybox.io](http://www.propertybox.io)

**Sharman  
Quinney**

To view this property call Sharman Quinney on:  
**01832 735589**

# Selling your property?

Contact us to arrange a **FREE** home valuation.

 01832 735589

 16 High Street, THRAPSTON, Northamptonshire,  
NN14 4JH

 thrapston@sharmanquinney.co.uk

 [www.sharmanquinney.co.uk](http://www.sharmanquinney.co.uk)



 SCAN ME



Sharman Quinney Holdings Limited is registered in England and Wales under company number 4174227, Registered Office is Cumbria House, 16-20 Hockliffe Street, Leighton Buzzard, Bedfordshire, LU7 1GN. VAT Registration Number is 500 2481 05.

1: These particulars do not constitute part or all of an offer or contract. 2: The measurements indicated are supplied for guidance only and as such must be considered incorrect. 3: Potential buyers are advised to recheck the measurements before committing to any expense. 4: Sharman Quinney has not tested any apparatus, equipment, fixtures, fittings or services and it is the buyers interests to check the working condition of any appliances. 5: Sharman Quinney has not sought to verify the legal title of the property and buyers must obtain verification from their legal representative. 6: Intending purchasers will be asked to produce identification documentation at a later stage and we would ask your co-operation in order that there will be no delay in agreeing the sale. Ref: THR103699 - 0001

