



Linden House, The Green, Little Addington
£550,000 Freehold

**Sharman
Quinney**

Key Features



- A period stone built four double bedroom detached family home.
- Spacious kitchen/diner measuring 19ft 2 x 14ft 9 complete with electric Aga
- Master bedroom with Juliet balcony and en-suite shower room
- Driveway leading to larger than average single garage 11ft 5 x 16ft 8 (3.52m x 5.13m)
- Log burner to sitting room, high ceilings



Ground Floor

Sitting Room - 20' x 11' 4" (6.11m max x 3.61m)

Study - 12' 9" x 8' 7" (3.94m max x 2.67m)

Kitchen/Diner - 19' 2" x 14' 9" (5.86m x 4.55m)

Utility - 5' 6" x 7' 5" (1.71m x 2.30m)

Guest Cloaks W/C

First Floor

Bedroom One - 19' 3" x 13' 8" (5.89m x 4.22 max) Doors to Juliet balcony and door to en-suite shower room

Bedroom Two - 10' 9" x 11' 6" (3.34m x 3.56m)

Bedroom Three - 8' 5" x 11' 2" (2.61m x 3.42m)

Bedroom Four - 13' x 7' 7" (3.98m x 2.35m)

Family bathroom - A four-piece suite.

Outside

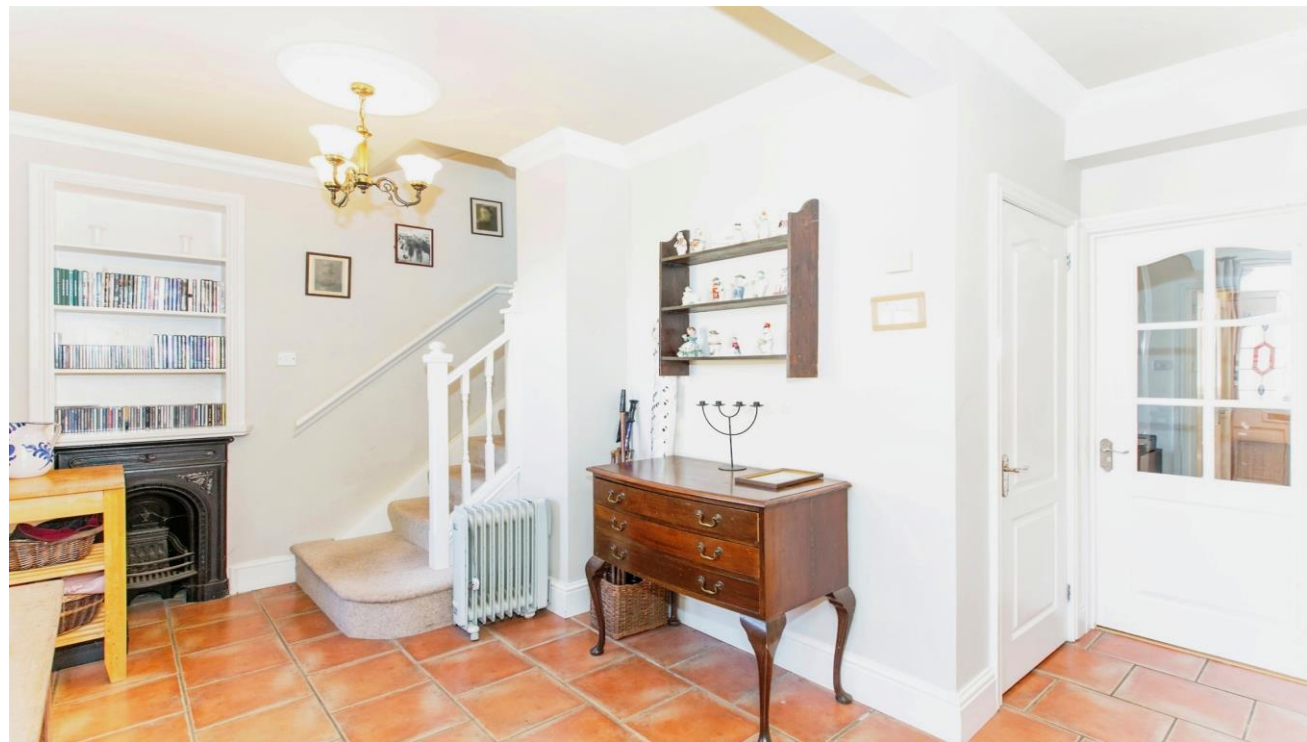
Front

An enclosed front garden, flanked either side with flowers, shrubs with path leading to canopied front door. A gravelled driveway providing off road parking for a number of vehicles which in turn leads to a single detached garage.

Garage - measuring 11ft 5 x 16ft 8 (3.52m x 5.13m) A recently built garage which is larger than a standard sized garage. The garage has five power points and LED lighting.

Rear

A split-level rear garden, with the immediate level having a bricked path leading to courtyard and access to garage. Steps ascending to the main garden which is laid to lawn with flower and shrub borders. A brick laid patio, close to pond. The rear garden offers a good degree of privacy and enjoys a sunny aspect.





Ground Floor

First Floor

Garage

This floor plan is for illustrative purposes only. It is not drawn to scale. Any measurements, floor areas (including any total floor area), openings and orientation are approximate. No details are guaranteed, they cannot be relied upon for any purpose and they do not form part of any agreement. No liability is taken for any error, omission or misstatement. A party must rely upon its own inspection(s). Powered by www.focalagent.com

To view this property call Sharman Quinney on:
01832 735589

Selling your property?

Contact us to arrange a **FREE** home valuation.

 01832 735589

 16 High Street, THRAPSTON, Northamptonshire,
NN14 4JH

 thrapston@sharmanquinney.co.uk

 www.sharmanquinney.co.uk



 SCAN ME



Sharman Quinney Holdings Limited is registered in England and Wales under company number 4174227, Registered Office is Cumbria House, 16-20 Hockliffe Street, Leighton Buzzard, Bedfordshire, LU7 1GN. VAT Registration Number is 500 2481 05.

1: These particulars do not constitute part or all of an offer or contract. 2: The measurements indicated are supplied for guidance only and as such must be considered incorrect. 3: Potential buyers are advised to recheck the measurements before committing to any expense. 4: Sharman Quinney has not tested any apparatus, equipment, fixtures, fittings or services and it is the buyers interests to check the working condition of any appliances. 5: Sharman Quinney has not sought to verify the legal title of the property and buyers must obtain verification from their legal representative. 6: Intending purchasers will be asked to produce identification documentation at a later stage and we would ask your co-operation in order that there will be no delay in agreeing the sale. Ref: THR103242 - 0003

