



Energy Efficiency Rating		
	Current	Potential
Very energy efficient - lower running costs		
(92+) A		
(81-91) B		81
(69-80) C		
(55-68) D	61	
(39-54) E		
(21-38) F		
(1-20) G		
Not energy efficient - higher running costs		
England & Wales	EU Directive 2002/91/EC	

enfields



The Square, Knottingley, WF11 8ND

Nine Bedroom Semi-Detached,
Auction Guide Price £180,000

Potential for HMO Rental Income : Large Dining Kitchen : Two Separate Bathrooms : Courtyard to Rear : Close to Local Amenities and Motorway Network : For Sale by Modern Auction – T & C's apply : Subject to Reserve Price : Buyers fees apply : The Modern Method of Auction

PROPERTY DETAILS

Enfields are delighted to offer for sale this nine bedroom, semi-detached property situated within Knottingley.

Expansive and having lots of potential, this property is located close to a full range of local amenities found within Knottingley, Pontefract town centre and Junction 32 Outlet Village all of which have a vast range of shops, supermarkets, cafes and restaurants. Easy access is also available to recreational facilities such as leisure centres, local golf courses, parkland, lakes and woodland. The property is also within close proximity to good local schooling at both primary and secondary level as well as comprehensive transport links into Wakefield, Doncaster, Leeds and York.

The accommodation is currently laid out potential as a 'house of multiple occupancy' with a potential lettings income and comprises to the ground floor; four bedrooms, a good sized communal kitchen and two w/c's. To the first floor; five additional bedrooms and two communal bathrooms.

The property further benefits from having outdoor space in the way of a courtyard to the rear. Available with no onward chain an internal viewing is highly recommended to appreciate what this property has to offer. Freehold: Council Tax Band D. For further information regarding this property please contact Pontefract Estate Agents, Enfields.

Auctioneer Comments

This property is for sale by the Modern Method of Auction. Should you view, offer or bid on the property, your information will be shared with the Auctioneer, iamsold Limited

This method of auction requires both parties to complete the transaction within 56 days of the draft contract for sale being received by the buyers solicitor (for standard Grade 1 properties). This additional time allows buyers to proceed with mortgage finance (subject to lending criteria, affordability and survey). The buyer is required to sign a reservation agreement and make payment of a non-refundable Reservation Fee. This being 4.5% of the purchase price including VAT, subject to a minimum of £6,600.00 including VAT. The Reservation Fee is paid in addition to purchase price and will be considered as part of the chargeable consideration for the property in the calculation for stamp duty liability. Buyers will be required to go through an identification verification process with iamsold and provide proof of how the purchase would be funded.

This property has a Buyer Information Pack which is a collection of documents in relation to the property. The documents may not tell you everything you need to know about the property, so you are required to complete your own due diligence before bidding. A sample copy of the Reservation Agreement and terms and conditions are also contained within this pack. The buyer will also make payment of £300 including VAT towards the

preparation cost of the pack, where it has been provided by iamsold.

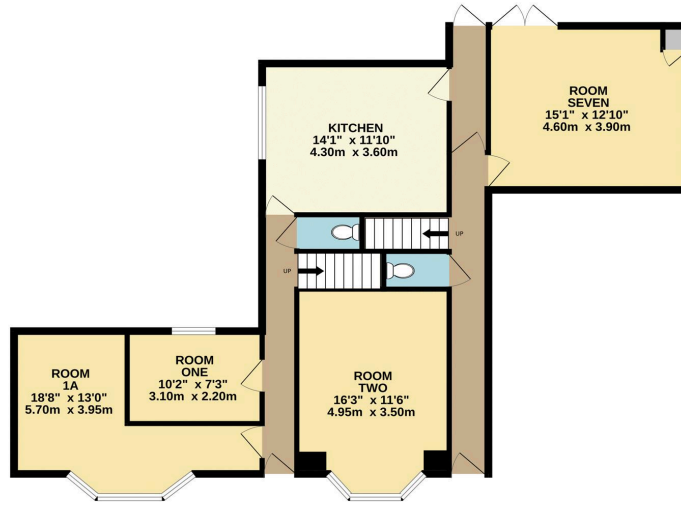
The property is subject to an undisclosed Reserve Price with both the Reserve Price and Starting Bid being subject to change.

Referral Arrangements

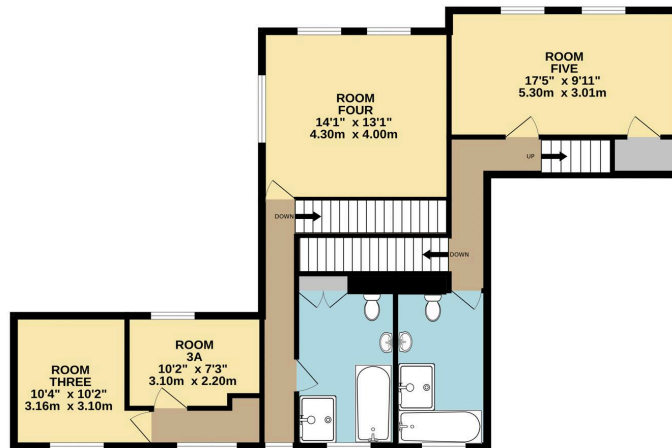
The Partner Agent and Auctioneer may recommend the services of third parties to you. Whilst these services are recommended as it is believed they will be of benefit; you are under no obligation to use any of these services and you should always consider your options before services are accepted. Where services are accepted the Auctioneer or Partner Agent may receive payment for the recommendation and you will be informed of any referral arrangement and payment prior to any services being taken by you.

FLOOR PLANS

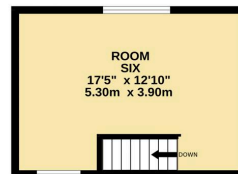
GROUND FLOOR
974 sq.ft. (90.5 sq.m.) approx.



1ST FLOOR
920 sq.ft. (85.5 sq.m.) approx.



2ND FLOOR
223 sq.ft. (20.7 sq.m.) approx.



TOTAL FLOOR AREA : 2117 sq.ft. (196.6 sq.m.) approx.

Whilst every attempt has been made to ensure the accuracy of the floorplan contained here, measurements of doors, windows, rooms and any other items are approximate and no responsibility is taken for any error, omission or mis-statement. This plan is for illustrative purposes only and should be used as such by any prospective purchaser. The services, systems and appliances shown have not been tested and no guarantee as to their operability or efficiency can be given.
Made with Metropix ©2024