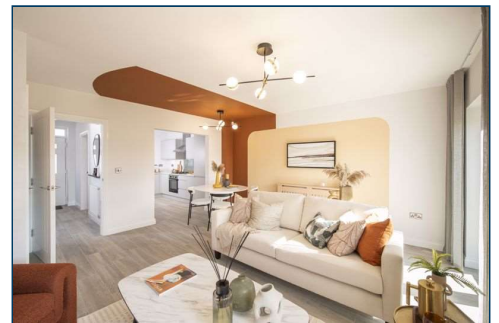


enfields



Pontefract Road, Featherstone, WF7 5AJ Four Bedroom Semi-Detached, **£294,995**

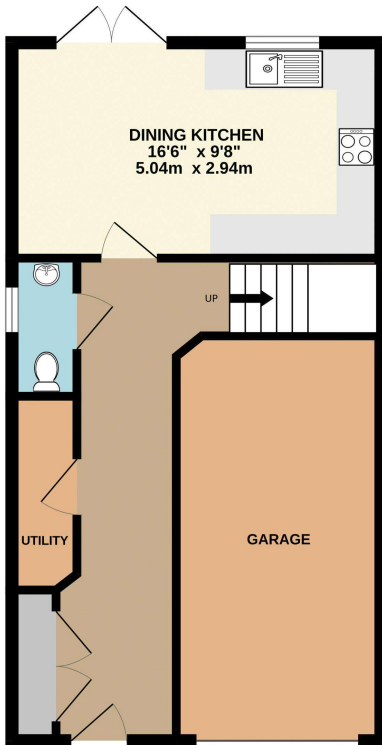
**New Build Home Ready 2024 : Incentives Available (Subject to Terms and Conditions) : 10 Year NHBC Warranty : Modern Open Plan Dining Kitchen
: Double Bedrooms Throughout : Master En-Suite and Modern Family Bathroom
: Driveway with Integral Garage and Electric Charging Point
: Close to Local Amenities and Public Transport
: Viewing A Must to Fully Appreciate**

PROPERTY DETAILS

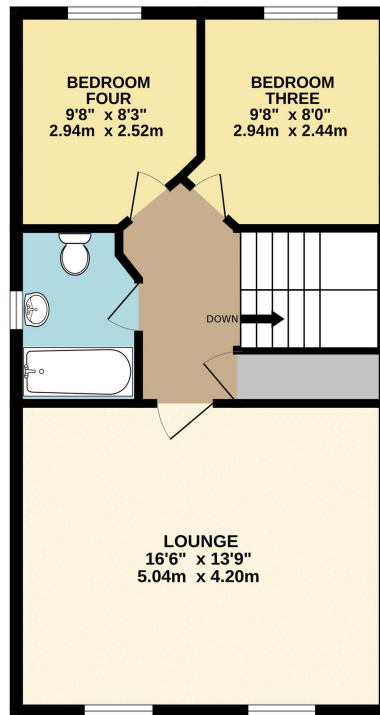
Enfields are delighted to offer for sale 'Arundel', an impressive and beautifully presented, brand new semi-detached home with high quality finish throughout, situated within a highly regarded residential area of Purston Jaglin. Well-proportioned and modern throughout, this home is close to a full range of local amenities found within Purston Jaglin, Pontefract town centre and Junction 32 Outlet Village including shops, supermarkets, post office, banks, cafes and restaurants. Easy access is also available to recreational facilities such as local sports centre and swimming baths, Xscape Castleford, local golf courses, parkland, lakes and woodland. There is close proximity to good local schooling at both primary and secondary level. The property is also close to extensive transport links into Wakefield and Leeds. Furthermore the property is close to the M1, A1 and M62 links. The property itself comprises to the ground floor; reception hallway with a built-in storage cupboard, utility, downstairs W/C and dining kitchen with fitted appliances and French doors to the rear. To the first floor; spacious lounge and modern bathroom and two double bedrooms. To the second floor; master bedroom and bedroom two, both with en-suites. The property further benefits from having a low maintenance, good sized turfed garden to the rear and outdoor lighting. Multiple off-street parking is also provided by means of a driveway and an integral single garage with electric car charger. Freehold. Council Tax Band TBC. For further information regarding this property please contact Pontefract Estate Agents, Enfields.

FLOOR PLANS

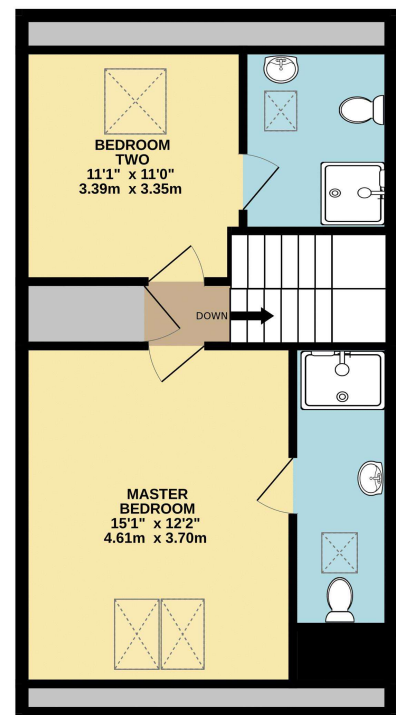
GROUND FLOOR
517 sq.ft. (48.0 sq.m.) approx.



1ST FLOOR
517 sq.ft. (48.0 sq.m.) approx.



2ND FLOOR
507 sq.ft. (47.1 sq.m.) approx.



TOTAL FLOOR AREA : 1540 sq.ft. (143.1 sq.m.) approx.

Whilst every attempt has been made to ensure the accuracy of the floorplan contained here, measurements of doors, windows, rooms and any other items are approximate and no responsibility is taken for any error, omission or mis-statement. This plan is for illustrative purposes only and should be used as such by any prospective purchaser. The services, systems and appliances shown have not been tested and no guarantee as to their operability or efficiency can be given.
Made with Metropix ©2024

Entrance Hallway

Door to front aspect, useful storage cupboard, door through to utility, doors leading through to other rooms and stairs to first floor landing.

Downstairs W/C

A two piece suite comprising of a low level W/C and hand wash basin, double glazed window to side aspect.

Dining Kitchen

16' 6" x 9' 8" (5.04m x 2.94m)

A range of modern storage units, inset sink and drainer with mixer tap, contemporary designs and colours to choose from, integrated Zanussi oven, gas hob and stainless steel extractor fan over, integrated dishwasher and fridge freezer, double glazed French doors leading directly out to rear garden.

First Floor Landing

Doors leading into other rooms, a large storage cupboard and stairs leading to second floor.

Lounge

13' 9" x 16' 6" (4.2m x 5.04m)

A large reception space with two double glazed windows to rear aspect.

House Bathroom

9' 0" x 5' 6" (2.74m x 1.67m)

Modern three piece suite comprising of a low level W/C, hand wash basin and bath, double glazed window to side aspect.

Bedroom Three

9' 8" x 8' 0" (2.94m x 2.44m)

Double glazed window to rear aspect.

Bedroom Four

9' 8" x 8' 3" (2.94m x 2.52m)

Double glazed window to rear aspect.

Second Floor Landing

Doors leading into other rooms and a large storage cupboard.

Master Bedroom

15' 1" x 12' 2" (4.61m x 3.70m)

Velux windows to front aspect, Hammonds fitted wardrobes and a door leading through to en-suite.

En-Suite

11' 10" x 3' 8" (3.61m x 1.13m)

Three piece suite comprising of a low level W/C, hand wash basin and a Mira walk-in shower. A choice of wall tiles and a heated towel radiator available.

Bedroom Two

11' 1" x 11' 0" (3.39m x 3.35m)

A fourth double bedroom having Velux windows to rear aspect.

En-suite

7' 3" x 5' 3" (2.20m x 1.61m)

Three piece suite comprising of a low level W/C, hand wash basin and a Mira walk-in shower. A choice of wall tiles and a heated towel radiator available.

Outside

Rear garden which is mainly laid to lawn with timber fencing to boundaries, intruder alarm and outside lighting. Multiple off-street parking is provided by a driveway, leading to an integral garage. Alongside this there is an electric car charging point.

Property Details: D1