



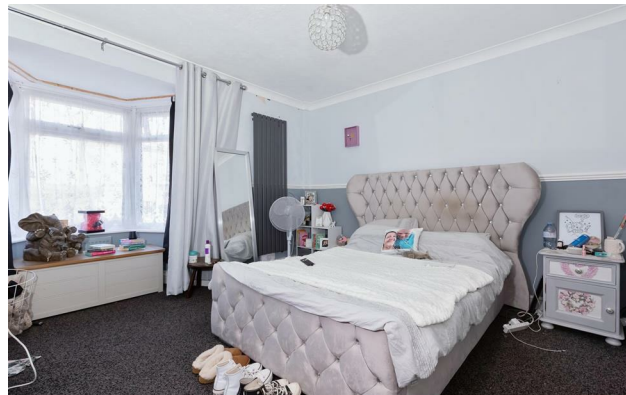
1



4



1



### Summary

We are pleased to present this well presented and extended four bedroom end terrace house located in Goring. The property in brief comprises three bedrooms and bathroom on the first floor and a further bedroom, lounge/diner, kitchen and W.C on the ground floor. There is parking for multiple cars, a south facing rear garden, it is well finished and has double glazing and gas fired central heating. It is located close to local schools, shops and transport links with main line station only a short walk away. internal viewing advised.

### Key Features

- Semi Detached House
- South Garden
- Well Presented
- Council Tax Band - B
- Four Bedrooms
- Off Road Parking
- Freehold
- EPC - TBC

# Description

## Entrance Hall

## Lounge / Diner

10'6" x 20'6" (max)

## Kitchen

9'6" x 14'0"

## Bedroom One

11'6" x 12'4"

## W.C

## First Floor Landing

## Bedroom Two

13'6" x 9'9"

## Bedroom Three

10'9" x 6'3"

## Bedroom Four

9'9" x 13'1"

## Shower Room

5'4" x 6'2"

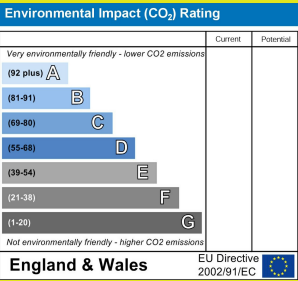
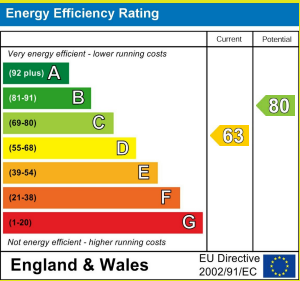
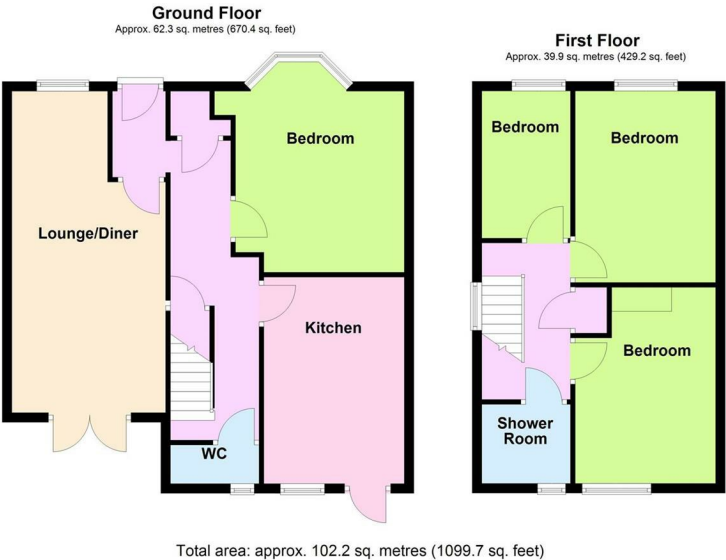
## Rear Garden

South Facing

## Front Garden

Parking for multiple cars

# Floor Plan



The information provided about this property does not constitute or form any part of an offer or contract, nor may it be regarded as representations. All interested parties must verify accuracy and your solicitor must verify tenure/lease information, fixtures and fittings and, where the property has been extended/converted, planning/building regulation consents. All dimensions are approximate and quoted for guidance only as are floor plans which are not to scale and their accuracy cannot be confirmed. References to appliances and/or services does not imply that they are necessarily in working order or fit for the purpose.