



Asking Price
£170,000
 Leasehold

Palatine Road, Goring-By-Sea

- First Floor Maisonette
- Two Bedrooms
- Modern Finish
- Long Lease
- Low Running Costs
- Chain Free
- Leasehold
- Council Tax Band - A
- EPC - E

We are pleased to present this two double bedroom first floor flat located in Goring. Positioned on the first floor with a private entrance, the property benefits two double bedrooms, a good sized lounge, kitchen and modern bathroom too. There is a healthy lease, low running costs and is located close to local schools, shops and transport links too. The property is being offered with no ongoing chain and would make an ideal first purchase or investment. Internal viewing advised.

T: 01903 331567 E: goring@robertluff.co.uk
www.robertluff.co.uk

**Robert
 Luff & Co**
 Sales | Lettings | Commercial



Accommodation

Entrance Hall

Private front door with stairs to 1st floor.

First Floor Landing

To storage cupboards one the housing hot water tank and the other housing electric meters further storage, wooden effect flooring, heater, roof skylight.

Lounge 10'10" x 14'1" (3.32 x 4.30)

Feature fireplace with tiled surround and half, double glazed window to front, heater.

Kitchen 10'10" x 7'5" (3.32 x 2.27)

Measurements to include built in units housing 1 1/2 bowl surface mounted composite sink with mixer tap over, integrated oven with four point halogen, hob and extractor over, space and plumbing for washing machine and tumble dryer, built in storage cupboard offering shelving, wooden effect flooring, tiled, splashback's, serving hatch, part double glaze door to rear fire escape, with further double glazed window to side.

Bedroom One 11'6" x 14'6" (3.53 x 4.42)

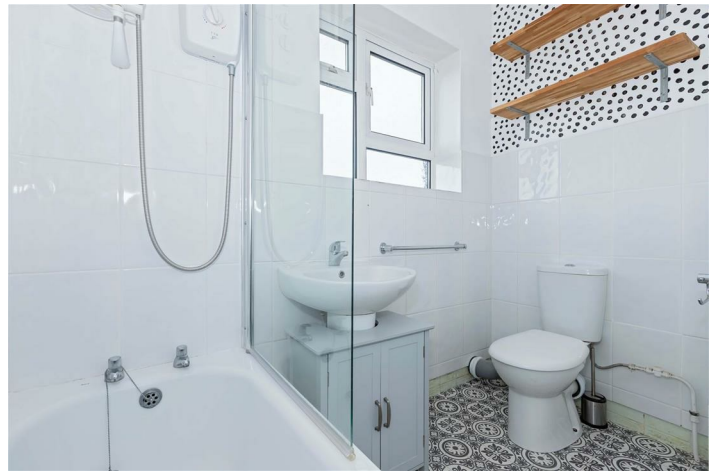
Measurements To include built in cupboard, offering storage, heater, double glazed window to front.

Bedroom Two 8'2" x 11'1" (2.51 x 3.40)

Double glazed window to rear, heater.

Bathroom

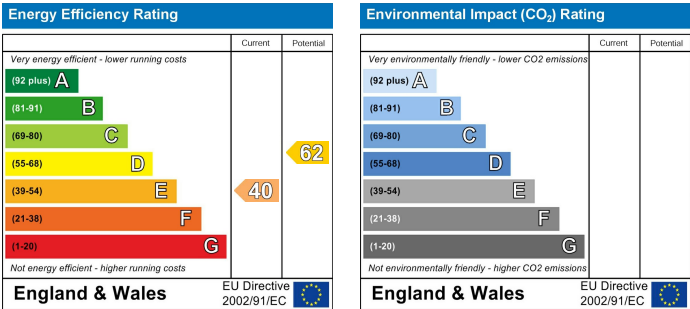
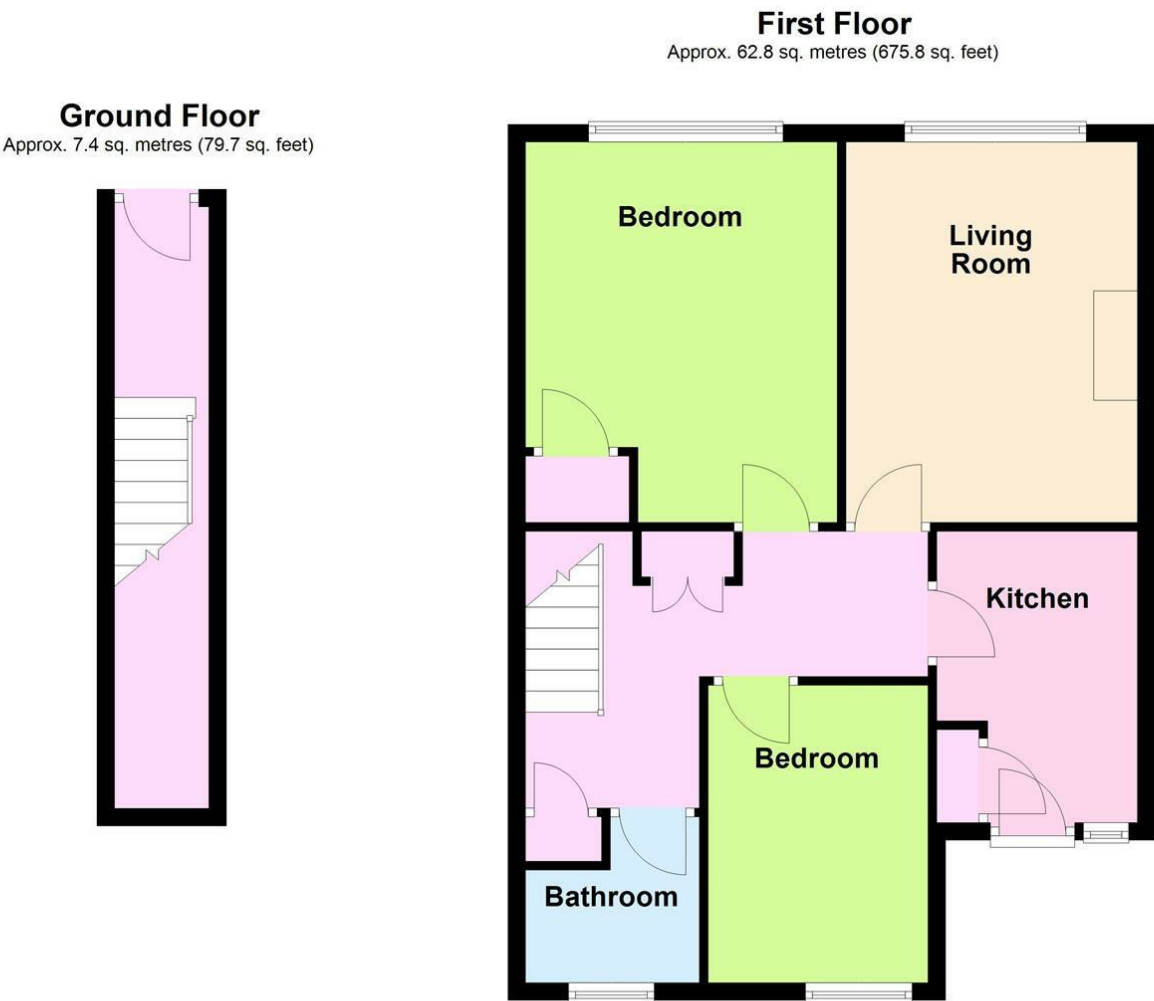
White suite, PVC panel bath with power shower glass screen over, pedestal wash hand basin with mixer tap over storage below, low level WC, part obscured double glazed window to rear, part tiled walls, lino flooring.



2 Boxgrove Parade Goring, Worthing, West Sussex, BN12 6BR

T: 01903 331567 E: goring@robertluff.co.uk

www.robertluff.co.uk



The information provided about this property does not constitute or form any part of an offer or contract, nor may it be regarded as representations. All interested parties must verify accuracy and your solicitor must verify tenure/lease information, fixtures and fittings and, where the property has been extended/converted, planning/building regulation consents. All dimensions are approximate and quoted for guidance only as are floor plans which are not to scale and their accuracy cannot be confirmed. References to appliances and/or services does not imply that they are necessarily in working order or fit for the purpose.