



Chesterfield Road, Goring-by-Sea

Asking Price
£230,000
 Leasehold

- Ground Floor Flat
- Two Double Bedrooms
- Garage
- Parking
- Modern Finish
- EPC - C
- Council Tax Band - B
- Leasehold

We are pleased to present this two double bedroom ground floor flat located in Goring. The property offers a modern finish, two double bedrooms, an open living area, garage and parking too. It is located close to local schools, shops and transport links and would make an ideal first purchase.

T: 01903 331567 E: goring@robertluff.co.uk
www.robertluff.co.uk

**Robert
 Luff & Co**
 Sales | Lettings | Commercial



Accommodation

Entrance Hall

Secure entry phone system, wooden front door, radiator, storage cupboard housing wall mounted combi boiler, fuse box and offering space and plumbing for washing machine, laminate flooring.

Living Area 10'5" x 19'9" maximum (3.19 x 6.03 maximum)

Measurements to include built in units in kitchen area. Range of matching floor and wall units with inset stainless steel sink with mixer tap over, integrated fridge / freezer, slimline dishwasher and integrated electric oven with four point gas hob and extractor over, two double glazed windows to side and rear, radiator, laminate flooring.

Bedroom One 14'4" x 9'9" (4.38 x 2.98)

Two double glazed windows to front and side, radiator, laminate flooring.

Bedroom Two 10'8" x 9'2" (3.27 x 2.80)

Two double glaze windows to side, radiator, laminate flooring.

Bathroom

White bathroom suite, PVC panelled bath with thermostatic shower and glass screen over, low-level WC, wall mounted wash hand basin with mixer tap over and storage below, tiled floor, part tiled walls, heated towel rail, wall mounted mirror, extractor fan.

Garage 16'4" x 7'10" (5.00 x 2.40)

Located in compound to rear, brick and corrugated roof construction, up and over main door.

Parking

Allocated space located to front of building.

Agents Note

Service charge - Approx £1,150 per annum

Ground Rent - £300 per annum

Lease - 118 years approximately

Ground Rent Review - TBC

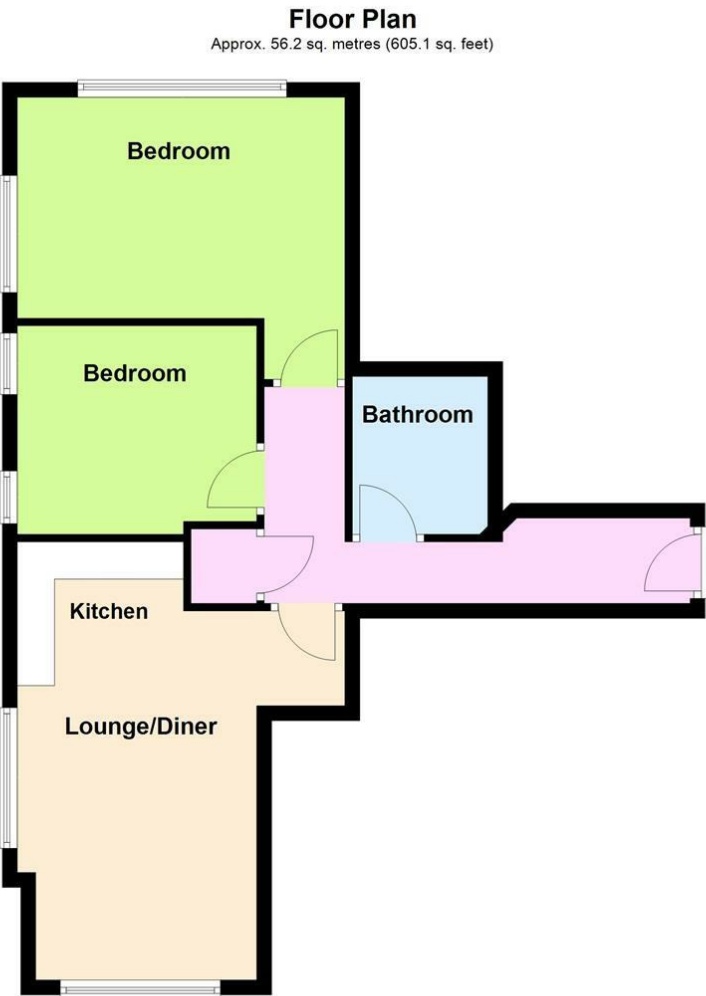
Service Charge Review - TBC



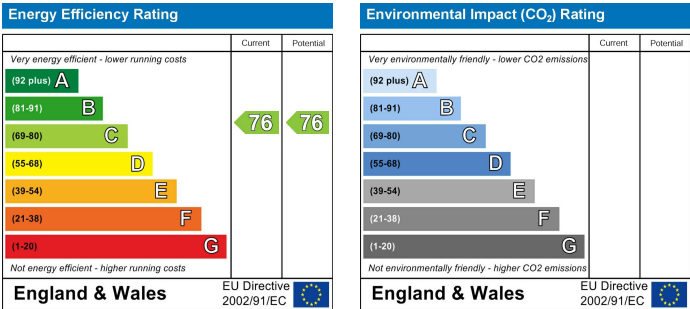
2 Boxgrove Parade Goring, Worthing, West Sussex, BN12 6BR

T: 01903 331567 E: goring@robertluff.co.uk

www.robertluff.co.uk



Total area: approx. 56.2 sq. metres (605.1 sq. feet)



The information provided about this property does not constitute or form any part of an offer or contract, nor may it be regarded as representations. All interested parties must verify accuracy and your solicitor must verify tenure/lease information, fixtures and fittings and, where the property has been extended/converted, planning/building regulation consents. All dimensions are approximate and quoted for guidance only as are floor plans which are not to scale and their accuracy cannot be confirmed. References to appliances and/or services does not imply that they are necessarily in working order or fit for the purpose.