



Westbourne Grove  
Notting Hill, W11

CHESTERTONS









This beautifully refurbished 2-bedroom apartment on Westbourne Grove, Notting Hill, boasts a high standard of finishes throughout. The entire apartment features exquisite wooden flooring, creating a warm and inviting atmosphere. The open-plan kitchen is a focal point of the living space, seamlessly blending modern design with functionality.

It is equipped with top-of-the-line appliances, sleek countertops, and ample storage. The bedrooms are spacious and comfortable, offering a tranquil retreat, and the entire apartment is bathed in natural light thanks to large windows. Located in the heart of Notting Hill, this apartment provides the perfect blend of style and convenience in one of London's most sought-after neighbourhoods.

- Renovated apartment
- Two bedrooms
- Open plan kitchen
- Modern bathroom
- Large reception
- Wooden floor throughout

### £3,200 pcm

Additional tenant charges apply (fees apply to non-AST tenancies only)

Tenancy Agreement Fee: £300

References per Tenant/Guarantor: £60

Inventory check (approx. £100 – £250 inc. VAT)

[chestertons.co.uk/property-to-rent/applicable-fees](https://www.chestertons.co.uk/property-to-rent/applicable-fees)

Energy Efficiency Rating		
Most energy efficient - lower running costs	Current	Potential
92-100 <b>A</b>		
81-91 <b>B</b>		
69-80 <b>C</b>		
55-68 <b>D</b>	<b>D4</b>	<b>D8</b>
49-54 <b>E</b>		
35-48 <b>F</b>		
1-34 <b>G</b>		
Not energy efficient - higher running costs		
EU Directive 2002/91/EC		
England, Scotland & Wales		

**Minimum Term:** 12 months  
**Deposit Required:** 5 weeks  
**Local Authority:** Westminster  
**Council Tax Band:** D  
**EPC Rating:** D  
**Furnished, Part Furnished, Unfurnished**

### Chestertons Notting Hill Lettings

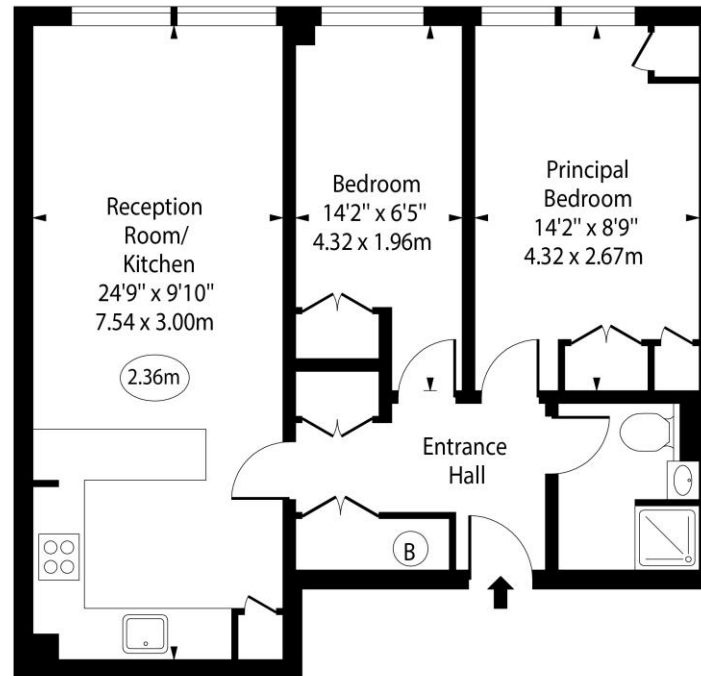
30 Ledbury Road  
 Notting Hill  
 London  
 W11 2AB

[nottinghilllettingsusers@chestertons.co.uk](mailto:nottinghilllettingsusers@chestertons.co.uk)  
 02030408588

Giles House,  
Westbourne Grove,  
Notting Hill, W11



○ - Ceiling Height



Fourth Floor

Approx Gross Internal Area      586 Sq Ft - 54.44 Sq M

For Illustration Purposes Only - Not To Scale

[www.goldlens.co.uk](http://www.goldlens.co.uk)

Ref. No. 022002E

Chesterton UK Services Limited trading as Chestertons for themselves and for the vendor of this property whose agents they are, give notice that (i) these particulars do not constitute any part of an offer or contract, (ii) all statements contained within these particulars are made without responsibility on the part of Chestertons or the vendor, (iii) whilst made in good faith, none of the statements contained within these particulars are to be relied upon as a statement or representation of fact, (iv) any intending purchasers must satisfy themselves by inspection or otherwise as to the correctness of each of the statements contained within these particulars, (v) the vendor does not make or give either Chestertons or any person in their employment any authority to make or give representation or warranty whatsoever in relation to this property. Wide angle lenses may be used. ©Copyright Chestertons | Chesterton Global Ltd | Registered Office 40 Connaught Street, Hyde Park, London W2 2AB Registered Company Number 05334580.



This paper is  
100% recyclable