



Chepstow Road  
Notting Hill, W2

CHESTERTONS









Chestertons are proud to present this stunning, brand new renovated two bedroom apartment finished to an exceptional standard throughout, available to rent on Chepstow Road, W2.

The apartment benefits from having its own private entrance. It has a large open plan reception room and kitchen. The Kitchen is sleek and fully integrated, complete with a full sized smart oven combi-microwave with optional wifi control, a Quooker Tap with built in kettle and cold filtered water, a tall fridge/freezer, a dishwasher and a washer/dryer machine. When entering the flat you are greeted by a calming cloakroom area with built-in seating and mood lighting.

Sleeping accommodation consists of two double bedrooms. The principle bedroom has its own en suite and a bright dressing area with a sky light. Both bedrooms benefit from direct access to the private garden patio through large French doors.

The apartment is a 'smart home' complete with a sophisticated alarm system, smart underfloor heating and smart lighting.

Chepstow Road is in the very heart of Notting Hill, a moment's walk from Westbourne Grove and all of the local shops, restaurants and cafes. Equally short distance are Westbourne Park, Royal Oak and Notting Hill Gate underground tube stations and bus route options.

- Completely refurbished throughout
- Two bedrooms
- Two bathrooms
- Modern and sleek finish
- Private entrance and patio

### £3,800 pcm

Additional tenant charges apply (fees apply to non-AST tenancies only)

Tenancy Agreement Fee: £300

References per Tenant/Guarantor: £60

Inventory check (approx. £100 – £250 inc. VAT)

[chestertons.co.uk/property-to-rent/applicable-fees](https://chestertons.co.uk/property-to-rent/applicable-fees)

Energy Efficiency Rating		
Energy efficient - lower running costs	Current	Potential
A (94-100)		
B (81-93)		
C (69-80)	71	78
D (55-68)		
E (39-54)		
F (21-38)		
G (1-20)		
Not energy efficient - higher running costs		
England, Scotland & Wales		
EU Directive 2002/91/EC		

**Minimum Term:** 12 months  
**Deposit Required:** £4,384.62  
**Local Authority:** Westminster  
**Council Tax Band:** C  
**EPC Rating:** C  
**Furnished, Part Furnished**

### Chestertons Notting Hill Lettings

30 Ledbury Road  
 Notting Hill  
 London  
 W11 2AB

[nottinghilllettingsusers@chestertons.co.uk](mailto:nottinghilllettingsusers@chestertons.co.uk)  
 02030408588

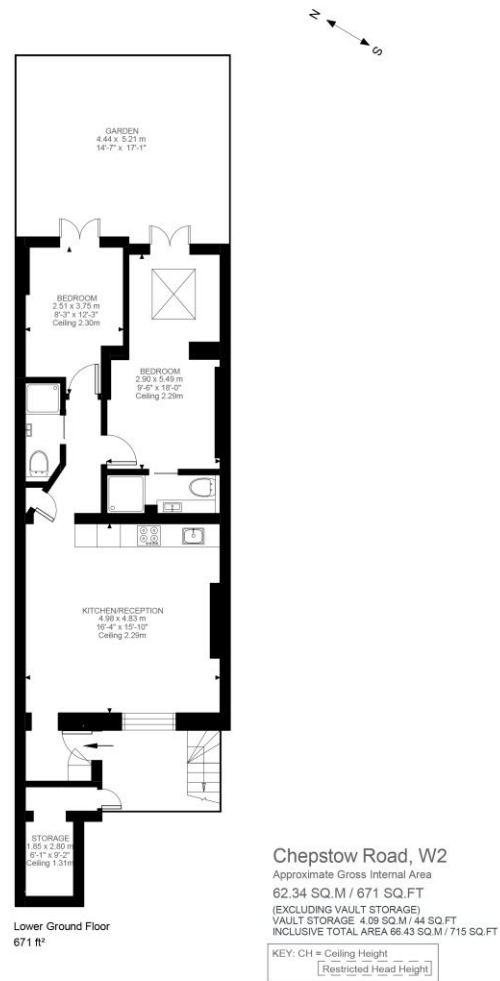


Illustration for identification purposes only. Not to scale.  
 Floor Plan Drawn According To RICS Guidelines.

Chesterton UK Services Limited trading as Chestertons for themselves and for the vendor of this property whose agents they are, give notice that (i) these particulars do not constitute any part of an offer or contract, (ii) all statements contained within these particulars are made without responsibility on the part of Chestertons or the vendor, (iii) whilst made in good faith, none of the statements contained within these particulars are to be relied upon as a statement or representation of fact, (iv) any intending purchasers must satisfy themselves by inspection or otherwise as to the correctness of each of the statements contained within these particulars, (v) the vendor does not make or give either Chestertons or any person in their employment any authority to make or give representation or warranty whatsoever in relation to this property. Wide angle lenses may be used. ©Copyright Chestertons | Chesterton Global Ltd | Registered Office 40 Connaught Street, Hyde Park, London W2 2AB Registered Company Number 05334580.

