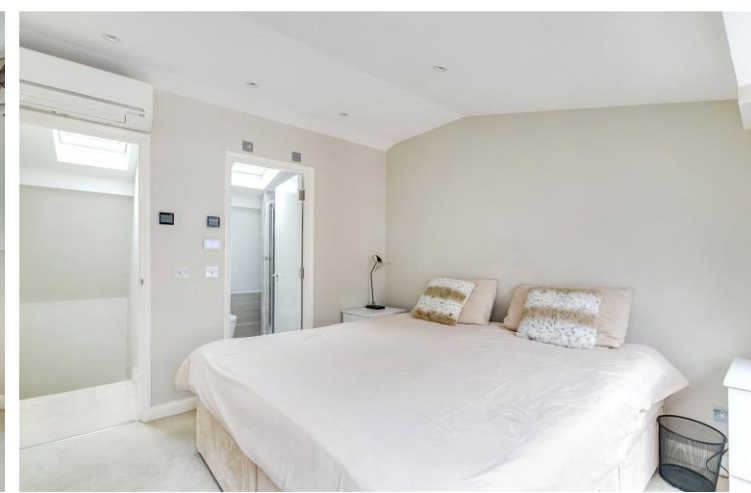




Shrewsbury Mews  
London, W2

CHESTERTONS









Short Let - Introducing this modern, gated two bedroom, two bathroom mews house located moments away from Westbourne Grove.

This furnished property boasts a contemporary design with high-quality finishes throughout. The property features two well-appointed bedrooms, ideal for a small family or professionals looking for a comfortable living space.

With its convenient location close to local amenities and transport links, this property offers the perfect blend of comfort and convenience.

- Short Let
- Two Double Bedrooms
- Two Bathrooms
- Mews House
- Furnished
- Gated

**£4,500 pcm**

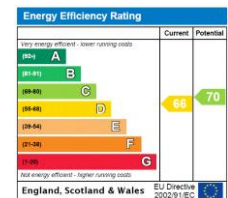
Additional tenant charges apply (fees apply to non-AST tenancies only)

Tenancy Agreement Fee: £300

References per Tenant/Guarantor: £60

Inventory check (approx. £100 – £250 inc. VAT)

[chestertons.co.uk/property-to-rent/applicable-fees](http://chestertons.co.uk/property-to-rent/applicable-fees)



**Minimum Term:** 1 months  
**Deposit Required:** £2,076.92  
**Local Authority:** Westminster  
**Council Tax Band:** F  
**EPC Rating:** D  
**Furnished**

*Chestertons Notting Hill Lettings*

30 Ledbury Road  
 Notting Hill  
 London  
 W11 2AB

[nottinghilllettingsusers@chestertons.co.uk](mailto:nottinghilllettingsusers@chestertons.co.uk)  
 02030408588

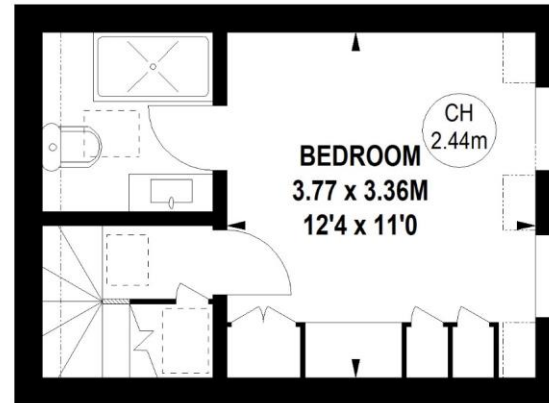
# Shrewsbury Mews, W2

Approximate gross internal area

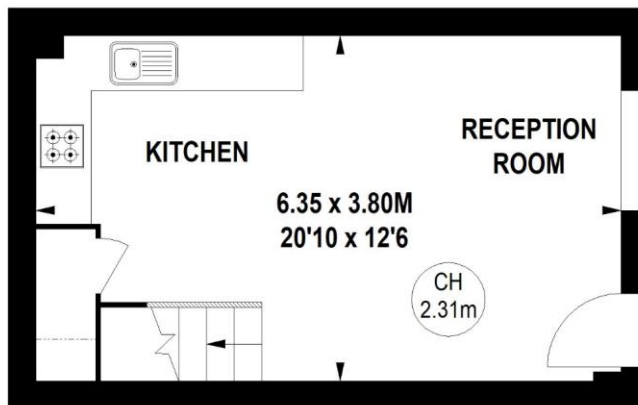
67.63 sq m / 728 sq ft



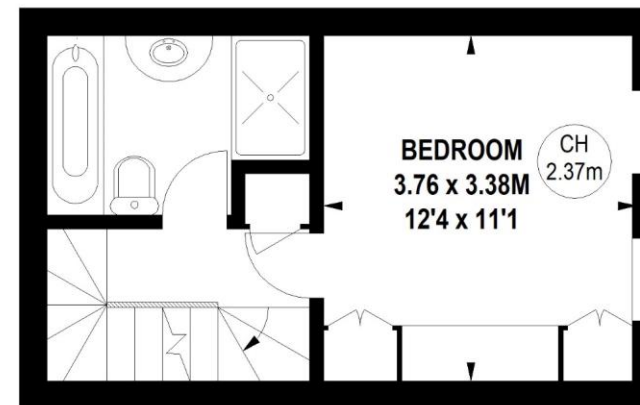
Key :  
CH - Ceiling Height



**Second Floor**



**Ground Floor**



**First Floor**

Not to scale, for guidance only and must not be relied upon as a statement of fact.  
All measurements and areas are approximate only

