



Royal Crescent
London, W11

CHESTERTONS





This charming ground floor apartment in a period building offers a perfect blend of character and modern comfort. This property has a one spacious bedroom with walk in wardrobe, a bright living area, and a well-equipped kitchen. The apartment benefits from large windows that flood the rooms with natural light, creating a warm and inviting atmosphere.

The property benefits of council tax and WIFI included within the rent

Conveniently located in Holland Park, residents can enjoy easy access to local amenities, shops, and transport links. This property is ideal for professionals or couples seeking a stylish and comfortable living space. Don't miss the opportunity to make this delightful apartment your home.

Contact us today to arrange a viewing and experience the charm and convenience this property has to offer.

- One bedroom
- Open plan kitchen
- Brand new bathroom
- Walk in wardrobe
- Large windows
- Rent includes WIFI + Council tax

£3,000 pcm

Additional tenant charges apply (fees apply to non-AST tenancies only)

Tenancy Agreement Fee: £300

References per Tenant/Guarantor: £60

Inventory check (approx. £100 – £250 inc. VAT)

chestertons.co.uk/property-to-rent/applicable-fees

Score	Energy rating	Current	Potential
92+	A		
81-91	B		
69-80	C		78 C
55-68	D	62 D	
39-54	E		
21-38	F		
1-20	G		

Minimum Term: 12 months
Deposit Required: £3,461.54
Local Authority: Kensington and Chelsea
Council Tax Band: E
EPC Rating: D
Part Furnished

Chestertons Notting Hill Lettings

30 Ledbury Road
 Notting Hill
 London
 W11 2AB

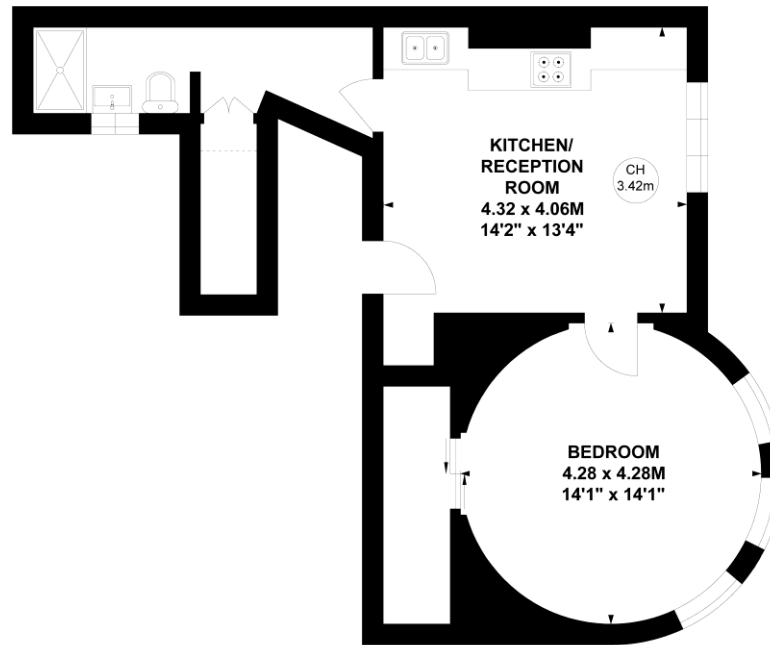
nottinghilllettingsusers@chestertons.co.uk
 02030408588

Royal Crescent, W11

Approximate gross internal area

47.55 sq m / 512 sq ft

Key :
CH - Ceiling Height



Ground Floor

Not to scale, for guidance only and must not be relied upon as a statement of fact.

All measurements and areas are approximate only

Chesterton UK Services Limited trading as Chestertons for themselves and for the vendor of this property whose agents they are, give notice that (i) these particulars do not constitute any part of an offer or contract, (ii) all statements contained within these particulars are made without responsibility on the part of Chestertons or the vendor, (iii) whilst made in good faith, none of the statements contained within these particulars are to be relied upon as a statement or representation of fact, (iv) any intending purchasers must satisfy themselves by inspection or otherwise as to the correctness of each of the statements contained within these particulars, (v) the vendor does not make or give either Chestertons or any person in their employment any authority to make or give representation or warranty whatsoever in relation to this property. Wide angle lenses may be used. ©Copyright Chestertons | Chesterton Global Ltd | Registered Office 40 Connaught Street, Hyde Park, London W2 2AB Registered Company Number 05334580.



This paper is
100% recyclable