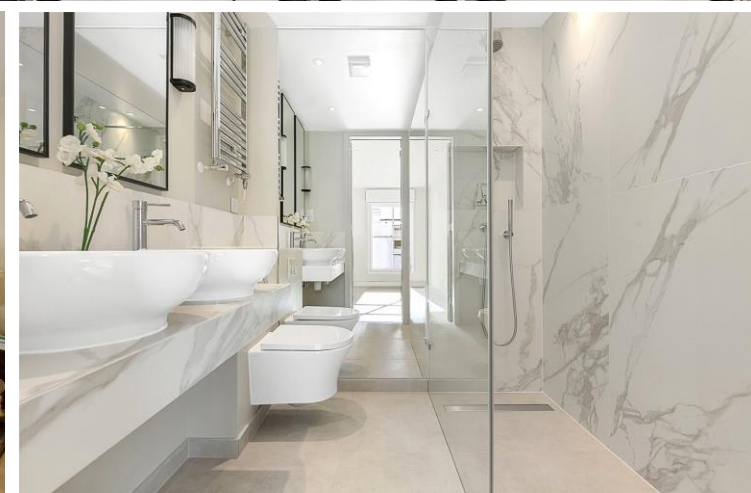




St. Stephens Gardens
Notting Hill, W2

CHESTERTONS





A terrific and rare to market, top floor apartment with outstanding private roof terrace. This three double bedroom apartment with resplendent views over Notting Hill boasts a semi-open plan reception room with wooden floors and kitchen with roof light.

The apartment is situated on the third and fourth floor of a Victorian terrace and comprises 1019 square feet. Offering three bedrooms, two bathrooms and benefiting from an exceptional roof terrace.

Located 0.4 miles from Westbourne Park and Royal Oak tube stations and 0.3 miles from Westbourne Grove for shops and eateries.

- Three Bedrooms
- Two Bathrooms
- Top Floor
- Private Roof Terrace
- 0.3 miles from Westbourne Grove

£6,283.33 pcm

Additional tenant charges apply (fees apply to non-AST tenancies only)

Tenancy Agreement Fee: £300

References per Tenant/Guarantor: £60

Inventory check (approx. £100 – £250 inc. VAT)

chestertons.co.uk/property-to-rent/applicable-fees

Score	Energy rating	Current	Potential
92+	A		
81-91	B		
69-80	C	79 C	81 B
55-68	D		
39-54	E		
21-38	F		
1-20	G		

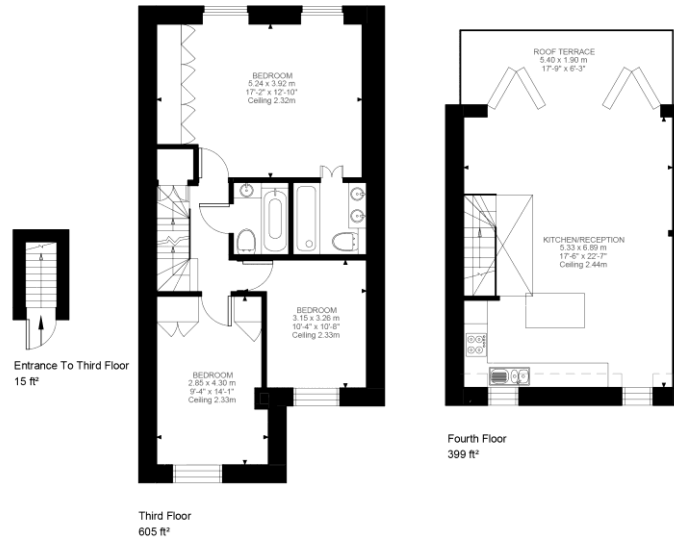
Minimum Term: 12 months
Deposit Required: £8,700.00
Local Authority: Westminster
Council Tax Band: E
EPC Rating: C
Unfurnished

Chestertons Notting Hill Lettings

30 Ledbury Road
 Notting Hill
 London
 W11 2AB

nottinghilllettingsusers@chestertons.co.uk

02030408588
chestertons.co.uk



St. Stephen's Gardens, W2

Approximate Gross Internal Area
94.67 SQ.M / 1019 SQ.FT

KEY: CH = Ceiling Height
[Restricted Head Height]

Illustration for identification purposes only. Not to scale.
Floor Plan Drawn According To RICS Guidelines.

Chesterton UK Services Limited trading as Chestertons for themselves and for the vendor of this property whose agents they are, give notice that (i) these particulars do not constitute any part of an offer or contract, (ii) all statements contained within these particulars are made without responsibility on the part of Chestertons or the vendor, (iii) whilst made in good faith, none of the statements contained within these particulars are to be relied upon as a statement or representation of fact, (iv) any intending purchasers must satisfy themselves by inspection or otherwise as to the correctness of each of the statements contained within these particulars, (v) the vendor does not make or give either Chestertons or any person in their employment any authority to make or give representation or warranty whatsoever in relation to this property. Wide angle lenses may be used. ©Copyright Chestertons | Chesterton Global Ltd | Registered Office 40 Connaught Street, Hyde Park, London W2 2AB Registered Company Number 05334580.

