



Linden Gardens
London, W2

CHESTERTONS





A beautiful two double bedroom period conversion, comprising 837 square feet. Perfectly situated for Notting Hill Gate and the central line, located in an imposing stucco-fronted terraced house.

Benefiting from wooden floors throughout, a stunning south-westerly facing reception room filled of natural light, recently refurbished German kitchen and two double bedrooms. Both bedrooms offer built in storage.

Exceptionally located 160m from Notting Hill Gate, 0.3 miles from Hyde Park and just over half a mile from the abundance of shops, amenities and eateries or Westbourne Grove and Kensington High Street.

- Two spacious bedrooms
- Modern bathroom
- Bright apartment
- Built in wardrobes
- Great storage
- Wooden floor

£3,300 pcm

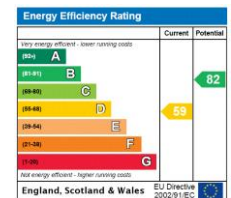
Additional tenant charges apply (fees apply to non-AST tenancies only)

Tenancy Agreement Fee: £300

References per Tenant/Guarantor: £60

Inventory check (approx. £100 – £250 inc. VAT)

[chestertons.co.uk/property-to-rent/applicable-fees](https://www.chestertons.co.uk/property-to-rent/applicable-fees)



Minimum Term: 12 months
Deposit Required: £3,807.69
Local Authority: Westminster
Council Tax Band: E
EPC Rating: D
Unfurnished

Chestertons Notting Hill Lettings

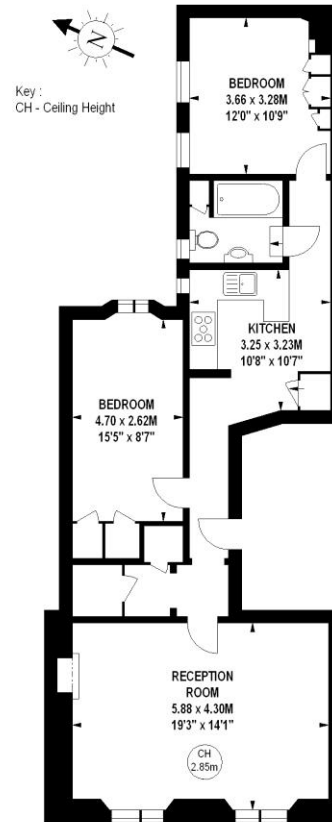
30 Ledbury Road
 Notting Hill
 London
 W11 2AB

nottinghilllettingsusers@chestertons.co.uk
 02030408588

Linden Gardens, W2

Approximate gross internal area

77.76 sq m / 837 sq ft



Fourth Floor

The floor plan is not to scale and measurements and areas shown are approximate and therefore should be used for illustrative purposes only.
The plan has been prepared in accordance with the RICS code of Measuring Practice and whilst we have confidence in the information produced, it must not be relied on.
If there is any aspect of particular importance, you should carry out or commission your own inspection of the property.
Copyright of FeaturePRO.

Chesterton UK Services Limited trading as Chestertons for themselves and for the vendor of this property whose agents they are, give notice that (i) these particulars do not constitute any part of an offer or contract, (ii) all statements contained within these particulars are made without responsibility on the part of Chestertons or the vendor, (iii) whilst made in good faith, none of the statements contained within these particulars are to be relied upon as a statement or representation of fact, (iv) any intending purchasers must satisfy themselves by inspection or otherwise as to the correctness of each of the statements contained within these particulars, (v) the vendor does not make or give either Chestertons or any person in their employment any authority to make or give representation or warranty whatsoever in relation to this property. Wide angle lenses may be used. ©Copyright Chestertons | Chesterton Global Ltd | Registered Office 40 Connaught Street, Hyde Park, London W2 2AB Registered Company Number 05334580.



This paper is
100% recyclable