



Highlever Road

London, W10

£12,133 per month
(£2,800 per week)

CHESTERTONS

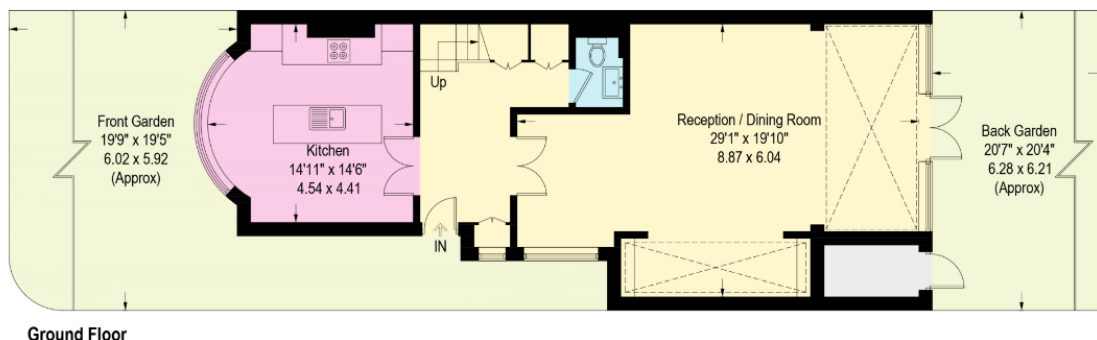
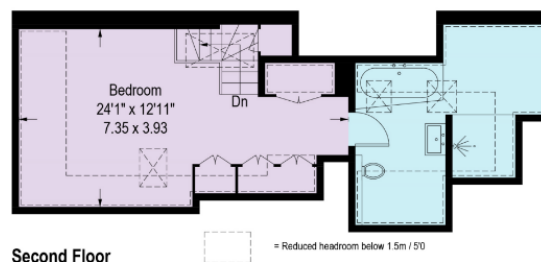
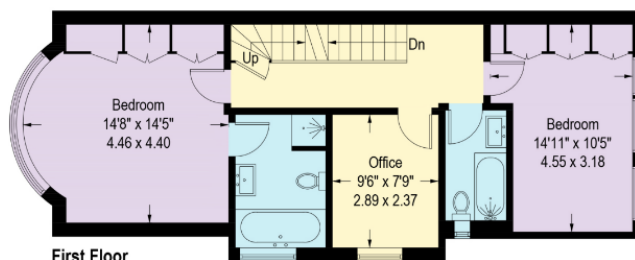
Notting Hill, London, W10

Approximate Gross Internal Area = 1733 sq ft / 161 sq m

Reduced Headroom = 185 sq ft / 17.2 sq m

External Cupboard = 27 sq ft / 2.5 sq m

Total = 1945 sq ft / 180.7 sq m



Minimum Term: 1 month
Deposit Required: 2-4 weeks
Local Authority:
Council Tax Band:
EPC Rating: To be confirmed

Chestertons Notting Hill Lettings

30 Ledbury Road
 Notting Hill
 London
 W11 2AB
 nottinghilllettingsusers@chestertons.co.uk
 02030408588

Additional tenant charges apply (fees apply to non-AST tenancies only)

Tenancy Agreement Fee: £300

References per Tenant/Guarantor: £60

Inventory check (approx. £100 – £250 inc. VAT)

chestertons.co.uk/property-to-rent/applicable-fees

Chesterton Global Ltd trading as Chestertons for themselves and for the vendor of this property whose agents they are, give notice that (i) these particulars do not constitute any part of an offer or contract, (ii) all statements contained within these particulars are made without responsibility on the part of Chestertons or the vendor, (iii) whilst made in good faith, none of the statements contained within these particulars are to be relied upon as a statement or representation of fact, (iv) any intending purchasers must satisfy themselves by inspection or otherwise as to the correctness of each of the statements contained within these particulars, (v) the vendor does not make or give either Chestertons or any person in their employment any authority to make or give representation or warranty whatsoever in relation to this property. Wide angle lenses may be used. ©Copyright Chestertons | Chesterton Global Ltd | Registered Office 40 Connaught Street, Hyde Park, London W2 2AB Registered Company Number 05334580.



This paper is
100% recyclable