



Pembridge Villas
Notting Hill, W11

CHESTERTONS





A modern, recently refurbished apartment, situated in a Victorian conversion in central Notting Hill on Pembridge Villas. Positioned on the second floor and with a south-westerly aspect to the front, the flat benefits from an abundance of light.

Fully refurbished in 2019, the apartment boasts wooden floors throughout. With an entrance hallway, offering built in storage and washing machine, an open plan modern kitchen and reception room and plentiful built in storage, a guest W/C, separate shower room and two double bedrooms positioned at the rear, overlooking Chepstow Villas.

Located 0.3 miles from Notting Hill Gate for the central, circle and district lines, along with bus connections to central London. 0.1 miles from Westbourne Grove for an abundance of eateries, shops and cafes.

- Two Bedrooms
- Modern
- Wooden Floors
- 0.1 mile from Westbourne Grove

£3,500 pcm

Additional tenant charges apply (fees apply to non-AST tenancies only)

Tenancy Agreement Fee: £300

References per Tenant/Guarantor: £60

Inventory check (approx. £100 – £250 inc. VAT)

chestertons.co.uk/property-to-rent/applicable-fees

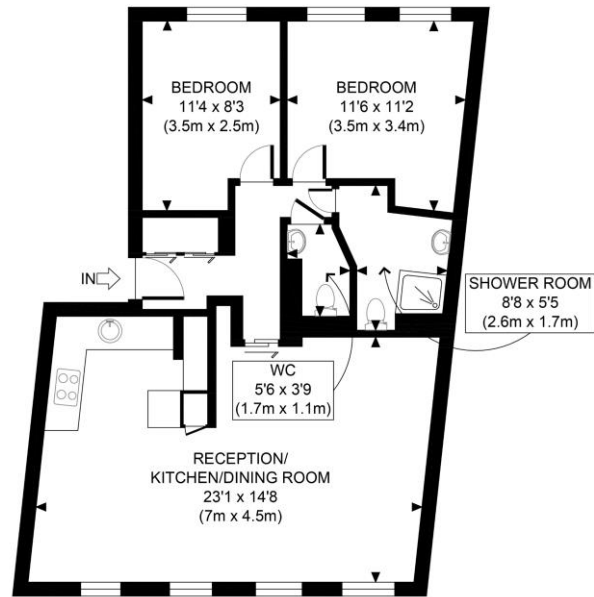
Energy Efficiency Rating		
Energy efficiency - lower running costs	Current	Potential
92-100 A		
81-91 B		
69-80 C	78	81
55-68 D		
49-54 E		
45-48 F		
35-39 G		
Not energy efficient - higher running costs		
EU Directive 2002/91/EC		
England, Scotland & Wales		

Minimum Term: 12 months
Deposit Required: Five weeks
Local Authority: Royal Borough of Kensington & Chelsea
Council Tax Band: F
EPC Rating: C
Furnished

Chestertons Notting Hill Lettings


30 Ledbury Road
 Notting Hill
 London
 W11 2AB

nottinghill@chestertons.co.uk
 02030408588



SECOND FLOOR
GROSS INTERNAL
FLOOR AREA 701 SQ FT



APPROX. GROSS INTERNAL FLOOR AREA 701 SQ FT / 65 SQM	Pembroke Villas W11
Disclaimer: Floor plan measurements are approximate and are for illustrative purposes only. While we do not doubt the floor plan accuracy and completeness, you or your advisors should conduct a careful, independent investigation of the property in respect of monetary valuation	date 20/11/20
	photoplan 

Chesterton Global Ltd trading as Chestertons for themselves and for the vendor of this property whose agents they are, give notice that (i) these particulars do not constitute any part of an offer or contract, (ii) all statements contained within these particulars are made without responsibility on the part of Chestertons or the vendor, (iii) whilst made in good faith, none of the statements contained within these particulars are to be relied upon as a statement or representation of fact, (iv) any intending purchasers must satisfy themselves by inspection or otherwise as to the correctness of each of the statements contained within these particulars, (v) the vendor does not make or give either Chestertons or any person in their employment any authority to make or give representation or warranty whatsoever in relation to this property. Wide angle lenses may be used. ©Copyright Chestertons | Chesterton Global Ltd | Registered Office 40 Connaught Street, Hyde Park, London W2 2AB Registered Company Number 05334580.

