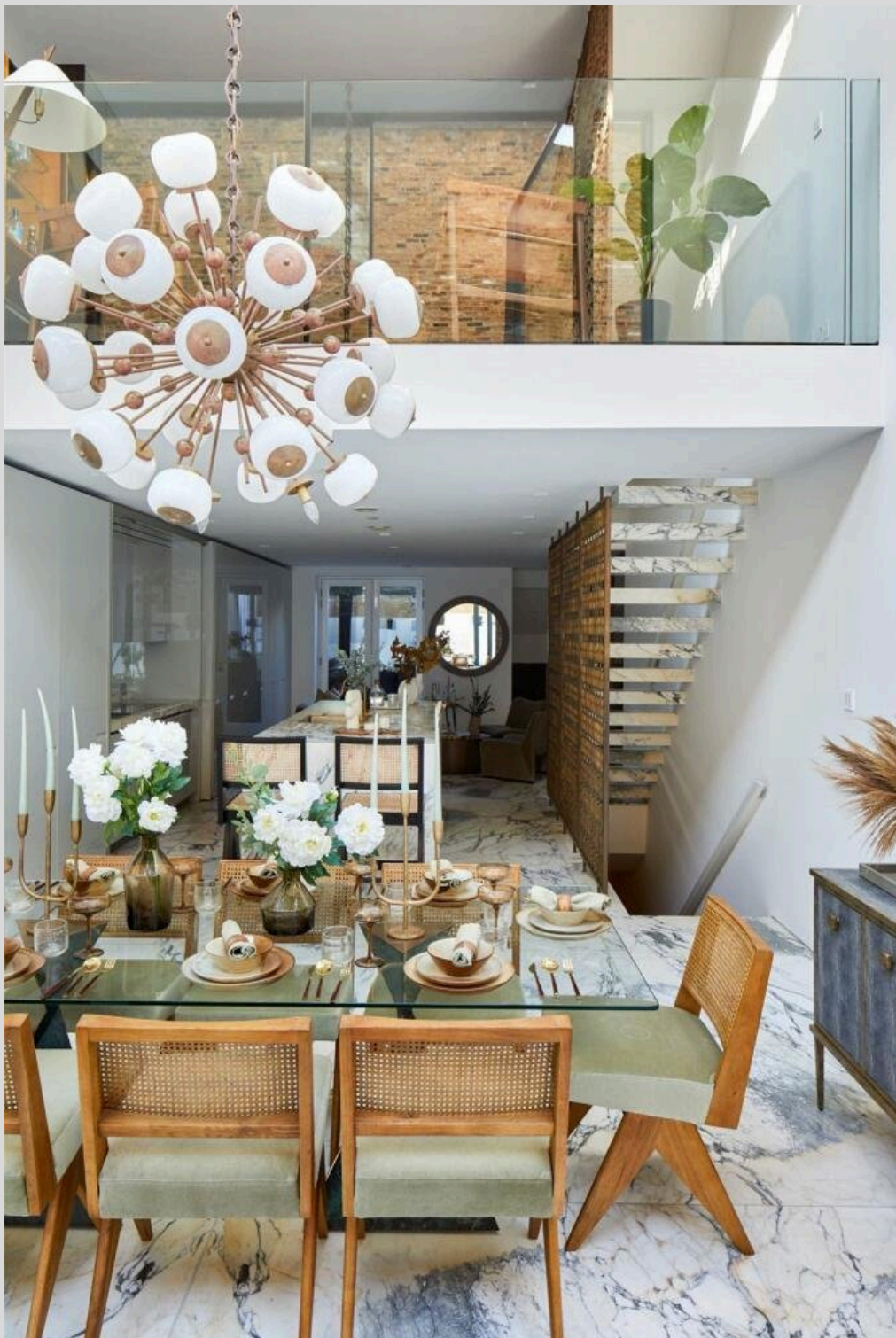


CHESTERTONS





Westbourne Grove

Notting Hill, W11 2SE

“ *A highly exclusive and exquisite five bedroom house with off street parking on Westbourne Grove with a swimming pool.* **”**

Short let: £13,846.15 per week / £60,000 per month

5



4



3,310
sqft





Property Description

An exceptional five-bedroom townhouse; a masterstroke of voluminous proportions and state-of-the-art interior design. A charcoal-black façade sits boldly amongst Westbourne Grove's rows of pastel-toned townhouses.

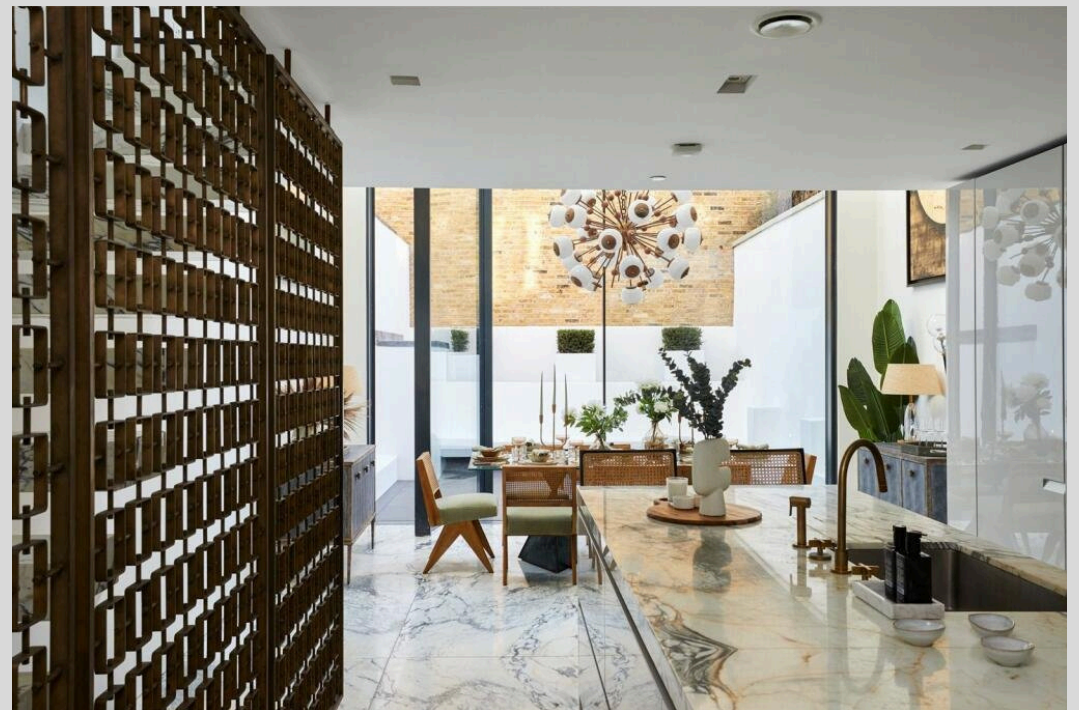
The ground-floor reception room sets a tone of stylish elegance, with dark wood floors & marble accents. A glass balustrade frames an immense double-height void connecting this room to the open plan kitchen and dining area below.

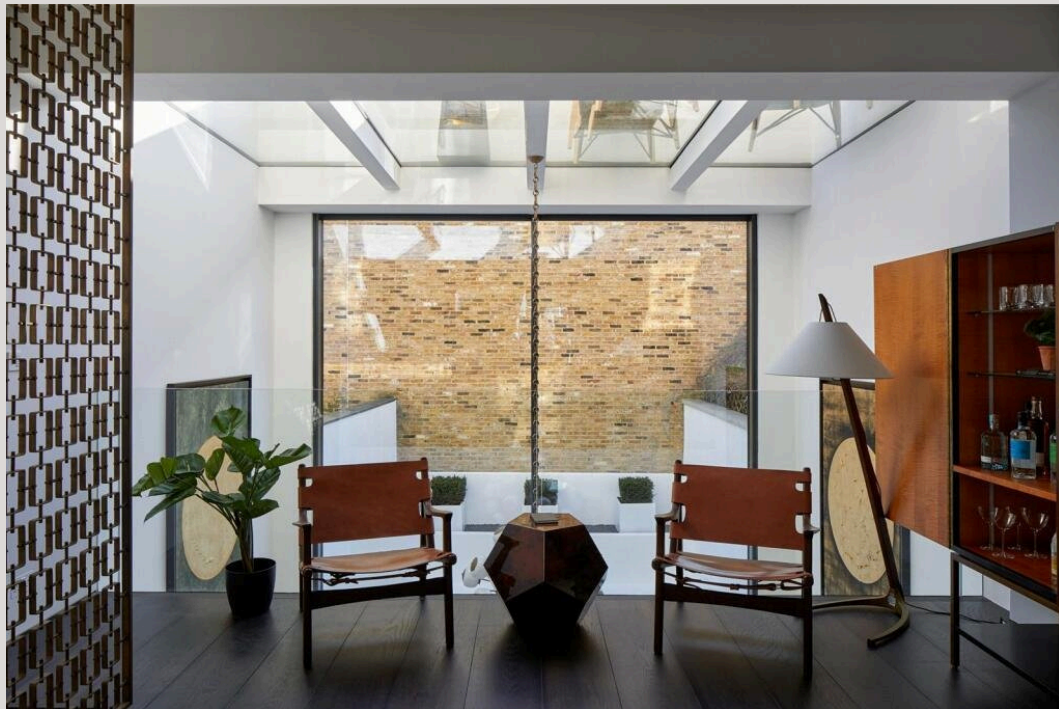
The kitchen has a large island, Chef-grade Gaggenau and Miele appliances and full-height wine storage. Beyond the dining space, the glass panels slide open to the garden. A towering wall of blonde brick and clean-line whitewashed seating paints an urban al fresco scene.

On the basement level there is an intimate family room and a marble-clad swimming pool is positioned next door. This floor also hosts a gym, double bedroom with en-suite.

The principal bedroom suite occupies the entire first floor, where there's direct access to the suntrap roof terrace. There are four guest bedrooms and two bathrooms across the rest of the home.

This home's outstanding refurbishment showcases the timelessness of expert design. Six stories of standout materials and sprawling proportions render a compelling canvas for modern family dwelling, enhanced by its inimitable position on Westbourne Grove.

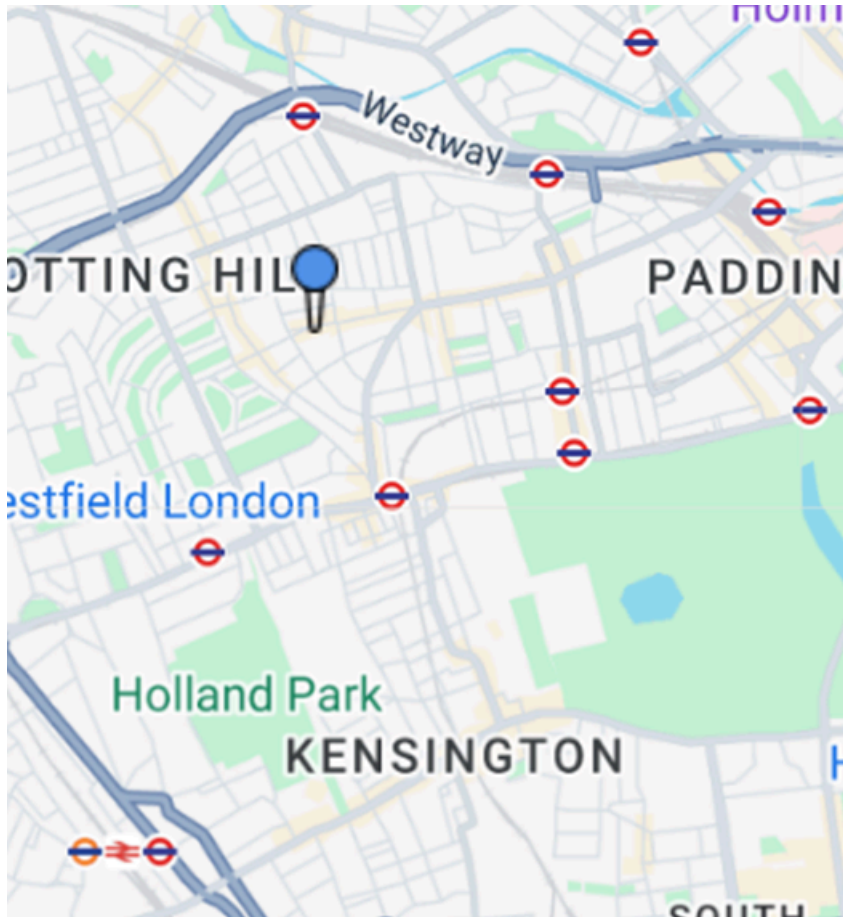








Property Location



Additional tenant charges apply (fees apply to non-AST tenancies only)

Tenancy Agreement Fee: £300

References per Tenant/Guarantor: £60

Inventory check (approx. £100 – £250 inc. VAT)

chestertons.co.uk/property-to-rent/applicable-fees

Chestertons Notting Hill

30 Ledbury Rd

London

W11 2AB

chestertons.co.uk

Chesterton Global Ltd trading as Chestertons for themselves and for the vendor of this property whose agents they are, give notice that (i) these particulars do not constitute any part of an offer or contract, (ii) all statements contained within these particulars are made without responsibility on the part of Chestertons or the vendor, (iii) whilst made in good faith, none of the statements contained within these particulars are to be relied upon as a statement or representation of fact, (iv) any intending purchasers must satisfy themselves by inspection or otherwise as to the correctness of each of the statements contained within these particulars, (v) the vendor does not make or give either Chestertons or any person in their employment any authority to make or give representation or warranty whatsoever in relation to this property. Wide angle lenses may be used. ©Copyright Chestertons | Chesterton Global Ltd | Registered Office 40 Connaught Street, Hyde Park, London W2 2AB Registered Company Number 05334580.