



St. Lawrence Terrace  
Notting Hill, W10









Nestled on a residential street in North Kensington, this charming period terraced house offers a perfect blend of historical elegance and modern convenience. Boasting an impressive 2,900 square feet of living space, this five-bedroom, four-bathroom property is ideal for families seeking a spacious and comfortable home. The property features on the ground floor a lateral double reception room, on the lower ground floor a spacious open plan kitchen with dining area and a well-maintained garden, perfect for enjoying the outdoors and entertaining guests. With a stylish interior and high-quality finishes throughout.

This home is ideal for those looking to experience the best of both worlds - a classic period property with all the amenities of modern living. Don't miss the opportunity to make this stunning property your new home. Contact us today to arrange a viewing.

- Five bedrooms
- Four bathrooms
- Terraced property
- Long let

### £15,000 pcm

Additional tenant charges apply (fees apply to non-AST tenancies only)

Tenancy Agreement Fee: £300

References per Tenant/Guarantor: £60

Inventory check (approx. £100 – £250 inc. VAT)

[chestertons.co.uk/property-to-rent/applicable-fees](https://chestertons.co.uk/property-to-rent/applicable-fees)

Energy Efficiency Rating		
Energy efficient - lower running costs	Current	Potential
92-100 A		82
81-91 B		
69-80 C	70	
55-68 D		
49-54 E		
45-48 F		
35-39 G		
Not energy efficient - higher running costs		
England, Scotland & Wales EU Directive 2002/91/EC		

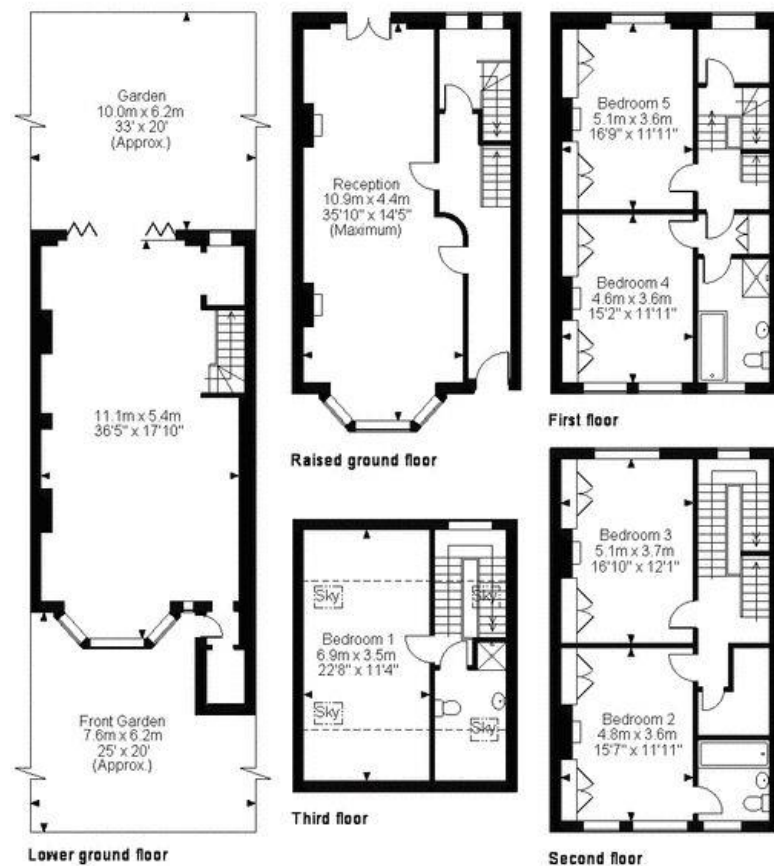
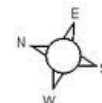
**Minimum Term:** 12 months  
**Deposit Required:** Six weeks  
**Local Authority:** Royal Borough of Kensington & Chelsea  
**Council Tax Band:** G  
**EPC Rating:** C  
**Unfurnished**

### Chestertons Notting Hill Lettings

30 Ledbury Road  
 Notting Hill  
 London  
 W11 2AB

[nottinghill@chestertons.co.uk](mailto:nottinghill@chestertons.co.uk)  
 02030408588

**St. Lawrence Terrace, W10**  
**Approximate gross internal area**  
**269 sq m (2,896 sq ft)**  
**GIA includes Restricted Head Height on Third Floor**



**FOR ILLUSTRATIVE PURPOSES ONLY - NOT TO SCALE**

The position & size of doors, windows, appliances and other features are approximate only.

□ □ □ Denotes restricted head height

ehouse. Unauthorised reproduction prohibited. Drawing ref. dig/8084319/KKM

Chesterton Global Ltd trading as Chestertons for themselves and for the vendor of this property whose agents they are, give notice that (i) these particulars do not constitute any part of an offer or contract, (ii) all statements contained within these particulars are made without responsibility on the part of Chestertons or the vendor, (iii) whilst made in good faith, none of the statements contained within these particulars are to be relied upon as a statement or representation of fact, (iv) any intending purchasers must satisfy themselves by inspection or otherwise as to the correctness of each of the statements contained within these particulars, (v) the vendor does not make or give either Chestertons or any person in their employment any authority to make or give representation or warranty whatsoever in relation to this property. Wide angle lenses may be used. ©Copyright Chestertons | Chesterton Global Ltd | Registered Office 40 Connaught Street, Hyde Park, London W2 2AB Registered Company Number 05334580.



This paper is  
100% recyclable