



Lonsdale Road
Notting Hill, W11

CHESTERTONS





A fantastic, four bedroom family house, comprising well over 2,000 square feet in the heart of Notting Hill. Newly re-decorated throughout the house offers exceptional living space including a living room, family room, study and eat in kitchen.

Further comprising four bedrooms, including a master bedroom and en-suite, a family bathroom and a generous roof terrace. The house is centrally located, moments from Westbourne Grove and Portobello Road for an abundance of cafes and eateries, shops and amenities.

Notting Hill Gate for the central, circle and district lines is located 0.5 miles away.

- 4 Bedrooms
- 2 Bathrooms
- Roof Terrace
- Moments from Westbourne Grove and Portobello Road

£1,350 per week (£5,850 pcm)


Additional tenant charges apply (fees apply to non-AST tenancies only)

Tenancy Agreement Fee: £300

References per Tenant/Guarantor: £60

Inventory check (approx. £100 – £250 inc. VAT)

[chestertons.com/property-to-rent/applicable-fees](https://www.chestertons.com/property-to-rent/applicable-fees)

Energy Efficiency Rating		Current	Potential
Very energy efficient - lower running costs			
(92-)	A		
(81-91)	B		
(69-80)	C		
(55-68)	D	59	81
(39-54)	E		
(21-38)	F		
(1-10)	G		
Not energy efficient - higher running costs			
England, Scotland & Wales		EU Directive 2002/91/EC	

Tenure: To be advised

Unfurnished

Chestertons Notting Hill Lettings

30 Ledbury Road

Notting Hill

London

W11 2AB

lettings.nottinghill@chestertons.com

02030408588

Lonsdale Road, W11

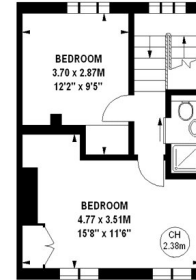
Approximate gross internal area
202.61 sq m / 2181 sq ft



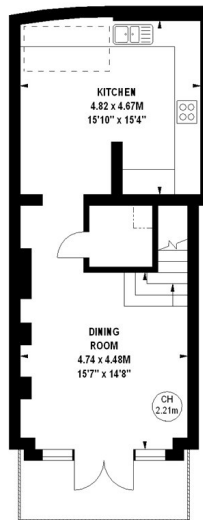
Key :
CH - Ceiling Height



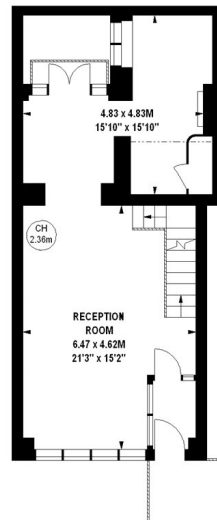
341 sq ft
Second Floor



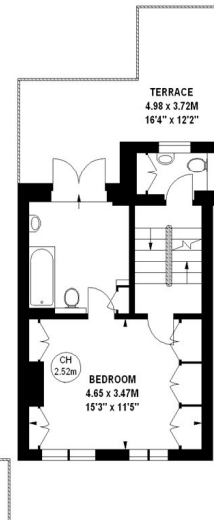
354 sq ft
Third Floor



576 sq ft
Lower Ground Floor



539 sq ft
Ground Floor



371 sq ft
First Floor

The floor plan is not to scale and measurements and areas shown are approximate and therefore should be used for illustrative purposes only.
The plan has been prepared in accordance with the RICS code of Measuring Practice and whilst we have confidence in the information produced, it must not be relied on.
If there is any aspect of particular importance, you should carry out or commission your own inspection of the property.
Copyright of FeaturePRO.