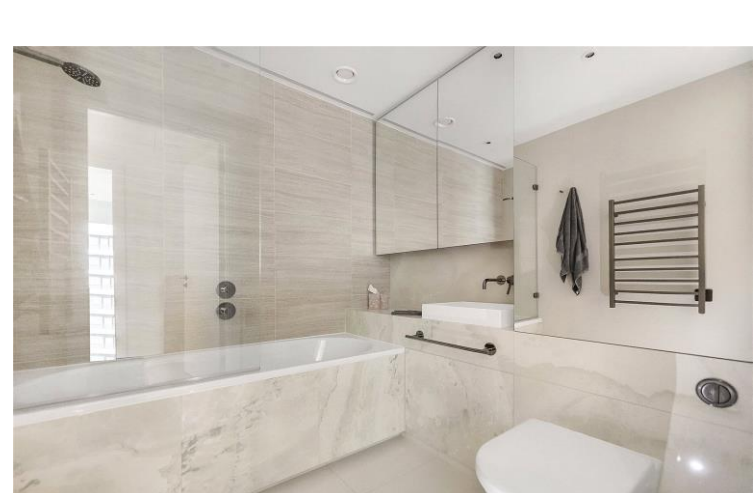




Belvedere Row Apts
Notting Hill, W12





A third floor apartment in this spectacular, brand new purpose built block in White City. Offering stunning communal and on site concierge, the apartment is brand new with sleek design throughout and boasting wooden floors and a generous terrace.

The apartment comprises an entrance hallway with built in storage, open plan fully-fitted kitchen and living room, leading onto the balcony, one double bedroom with built in storage and a beautifully fitted bathroom.

Located moments from Westfield Shopping Centre and 0.2 miles from both Wood Lane and White City tube stations for the Central Line, Circle and Hammersmith & City Lines.

Available furnished. Video viewing available

- Stunning 1 bedroom apartment
- Furnished
- 24 concierge
- Pool, gym and cinema
- Available immediately

£3,000 pcm

Additional tenant charges apply (fees apply to non-AST tenancies only)

Tenancy Agreement Fee: £300

References per Tenant/Guarantor: £60

Inventory check (approx. £100 – £250 inc. VAT)

[chestertons.co.uk/property-to-rent/applicable-fees](https://www.chestertons.co.uk/property-to-rent/applicable-fees)

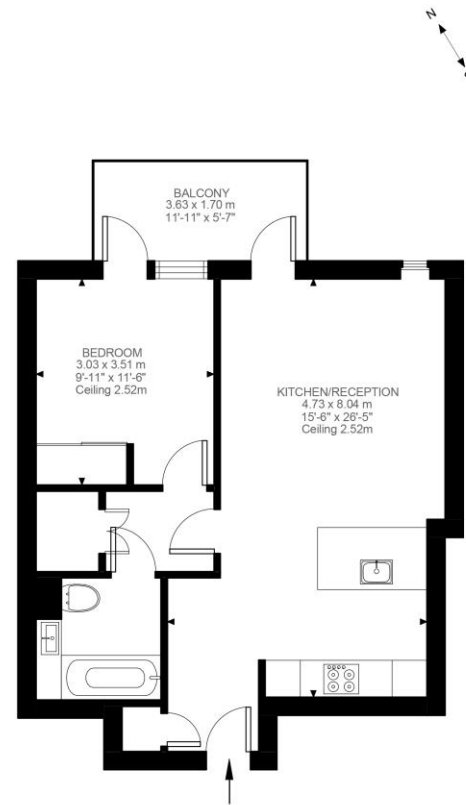
Energy Efficiency Rating		
Very energy efficient - lower running costs	Current	Potential
90-100 A		
81-90 B	85	85
69-80 C		
55-68 D		
49-54 E		
45-48 F		
35-44 G		
Not energy efficient - higher running costs		
EU Directive 2002/91/EC		
England, Scotland & Wales		

Minimum Term: 12 months
Deposit Required: 5 weeks
Local Authority: Hammersmith & Fulham
Council Tax Band: F
EPC Rating: B
Furnished

Chestertons Notting Hill Lettings

30 Ledbury Road
 Notting Hill
 London
 W11 2AB

nottinghill@chestertons.co.uk
 02030408588



Fountain Park Way, W12

Approximate Gross Internal Area
51.09 SQ.M / 550 SQ.FT

KEY: CH = Ceiling Height
[Restricted Head Height]

Illustration for identification purposes only. Not to scale.
Floor Plan Drawn According To RICS Guidelines.

Chesterton Global Ltd trading as Chestertons for themselves and for the vendor of this property whose agents they are, give notice that (i) these particulars do not constitute any part of an offer or contract, (ii) all statements contained within these particulars are made without responsibility on the part of Chestertons or the vendor, (iii) whilst made in good faith, none of the statements contained within these particulars are to be relied upon as a statement or representation of fact, (iv) any intending purchasers must satisfy themselves by inspection or otherwise as to the correctness of each of the statements contained within these particulars, (v) the vendor does not make or give either Chestertons or any person in their employment any authority to make or give representation or warranty whatsoever in relation to this property. Wide angle lenses may be used. ©Copyright Chestertons | Chesterton Global Ltd | Registered Office 40 Connaught Street, Hyde Park, London W2 2AB Registered Company Number 05334580.



This paper is
100% recyclable