



Evesham House
Hereford Road, W2

CHESTERTONS





Recently refurbished three bedroom apartment, located on the second floor of this well run, portered building. Renovated to fantastic specification the apartment comprising over 1,200 sq.ft. and benefitting from a large reception room with balcony, separate kitchen, three bedrooms and two baths.

Located on Hereford Road, moments from Moscow Road and Westbourne Grove for many amenities and eateries. The building has an onsite porter, lift and the property benefits from off-street, secure parking.

The property is situated 0.4 miles from both Notting Hill Gate and Queensway Tube stations for the central line.

- 3 Bedrooms
- 2 Bathrooms
- 1214 Sqf
- Portered building
- Lift access
- Balcony

£4,750 pcm

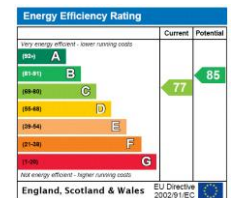
Additional tenant charges apply (fees apply to non-AST tenancies only)

Tenancy Agreement Fee: £300

References per Tenant/Guarantor: £60

Inventory check (approx. £100 – £250 inc. VAT)

chestertons.co.uk/property-to-rent/applicable-fees



Minimum Term: 12 months
Deposit Required: £6,576.92
Local Authority: City Of Westminster
Council Tax Band: G
EPC Rating: C
Unfurnished

Chestertons Notting Hill Lettings

30 Ledbury Road
 Notting Hill
 London
 W11 2AB

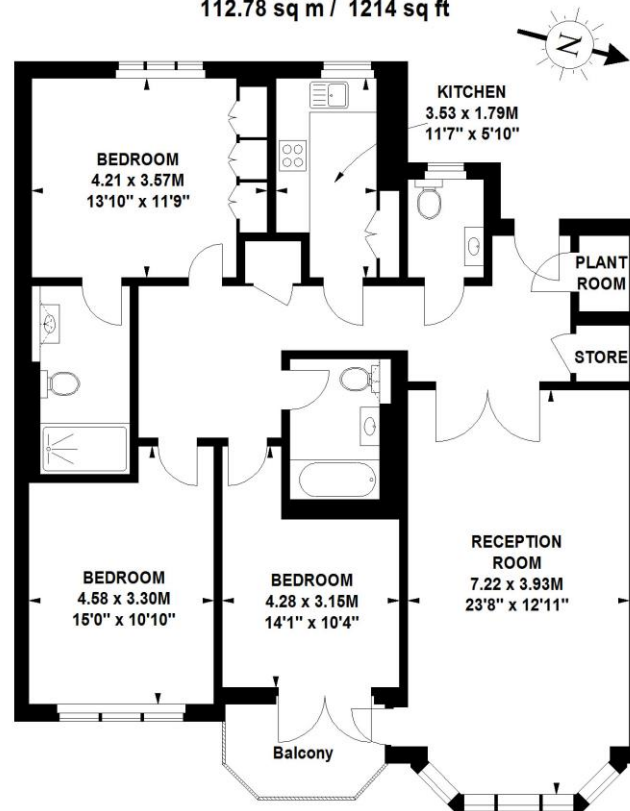
nottinghill@chestertons.co.uk

02030408588

Evesham House, W2

Approximate gross internal area

112.78 sq m / 1214 sq ft



Second Floor

The floor plan is not to scale and measurements and areas shown are approximate and therefore should be used for illustrative purposes only. The plan has been prepared in accordance with the RICS code of Measuring Practice and whilst we have confidence in the information produced, it must be not be relied on. If there is any aspect of particular importance, you should carry out or commission your own inspection of the property.
Copyright of FeaturePRO.

