



St. Helens Gardens
Notting Hill, W10

CHESTERTONS





VIDEO VIEWING AVAILABLE. A well refurbished two bedroom, two bathroom apartment situated on St Helens Gardens, North Kensington.

Offering a bright reception with open plan kitchen, equipped with modern appliances and plentiful storage. The generous principle bedroom features sky light windows and en-suite shower bathroom. The second bedroom fits a double bed (currently in place) but could be utilised as an office space or large dressing room

St Helens Gardens is a leafy, residential street in North Kensington. The nearest stations are Ladbroke Grove (0.5 miles) and Latimer Road (0.5 miles).

- Two Bedroom
- Third Floor
- Available Immediately
- 0.5 miles from Ladbroke Grove

£3,445 pcm

Additional tenant charges apply (fees apply to non-AST tenancies only)

Tenancy Agreement Fee: £300

References per Tenant/Guarantor: £60

Inventory check (approx. £100 – £250 inc. VAT)

chestertons.co.uk/property-to-rent/applicable-fees

Energy Efficiency Rating		Current	Potential
100-109	A		
81-100	B		
62-81	C	76	82
43-61	D		
25-42	E		
10-24	F		
1-9	G		

Not energy efficient - higher running costs

England, Scotland & Wales EU Directive 2002/91/EC

Minimum Term: 2-4 weeks
Deposit Required: Five weeks
Local Authority: Royal Borough Of Kensington & Chelsea
Council Tax Band: D
EPC Rating: C
Furnished

Chestertons Notting Hill Lettings

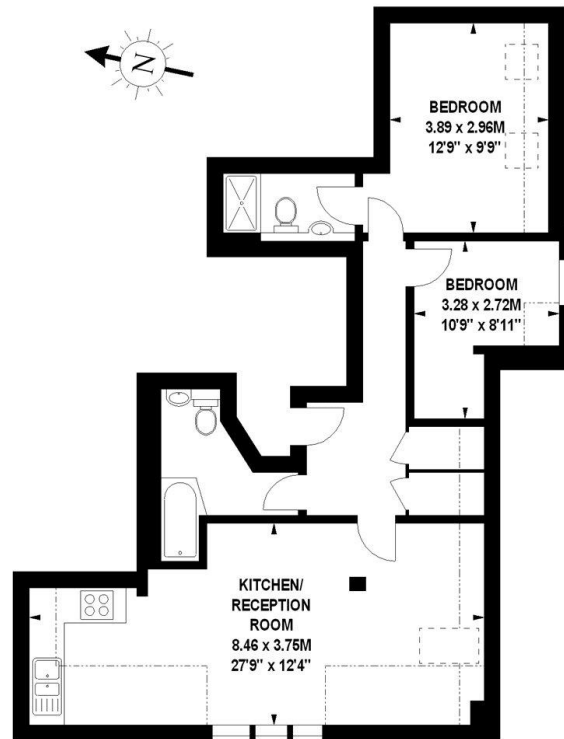
30 Ledbury Road
 Notting Hill
 London
 W11 2AB

nottinghill@chestertons.co.uk
 02030408588

St. Helens Gardens, W10

Approximate gross internal area

66.14 sq m / 712 sq ft



Third Floor

The floor plan is not to scale and measurements and areas shown are approximate and therefore should be used for illustrative purposes only.

The plan been prepared in accordance with the RICS code of Measuring Practice and whilst we have confidence in the information produced, it must be not be relied on.

If there is any aspect of particular importance, you should carry out or commission your own inspection of the property.

Copyright of FeaturePRO.

