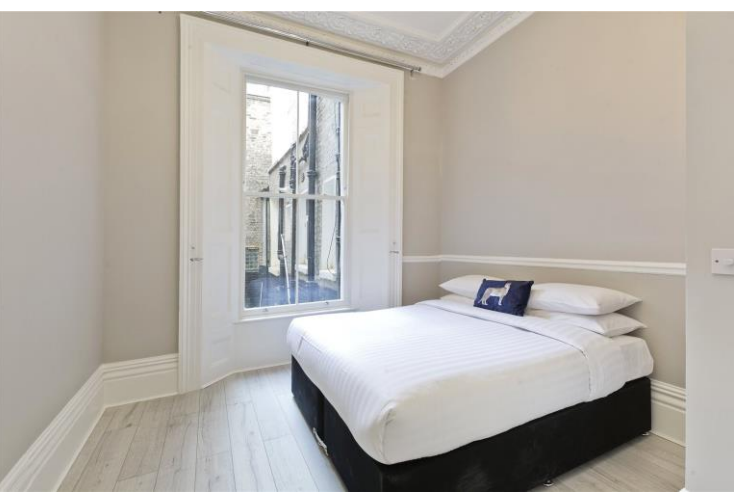




Princes Square  
Bayswater, W2

CHESTERTONS







Chestertons are delighted to present this brand new refurbished apartment on the raised ground floor of this stunning period Victorian building.

This charming two bedroom, one bathroom apartment has been completely refurbished from the ground up and now includes a brand new fully integrated kitchen, modern bathroom with LED lighting and low energy consuming bulbs, correctly placed modern radiators all with correct BVT placement ensuring maximum heat coverage within each room and efficiency is obtained along with all new wiring and plumbing. Being on the raised ground floor, the apartment benefits from large floor to ceiling windows overlooking a communal gardens square.

Within the communal areas of the building, all fire regulations and precautions have been implemented including FD30 fire doors within each apartment, emergency communal lighting and automatic PIR motion sensors lighting per floor.

CCTV cameras have been installed throughout the communal areas of the buildings and also on the exterior of the buildings proving comfort and security for its residents.

WIFI has also been installed into each apartment already making it an easy process for a tenant to move in and be online immediately.

- Two bedroom
- One bathroom
- Brand new refurbishment throughout
- Fully equipped kitchen
- Modern bathroom
- Communal garden square

**£4,983.33 pcm**

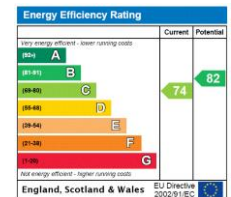
Additional tenant charges apply (fees apply to non-AST tenancies only)

Tenancy Agreement Fee: £300

References per Tenant/Guarantor: £60

Inventory check (approx. £100 – £250 inc. VAT)

[chestertons.co.uk/property-to-rent/applicable-fees](http://chestertons.co.uk/property-to-rent/applicable-fees)



**Minimum Term:** 12 months  
**Deposit Required:** Five weeks  
**Local Authority:** City Of Westminster  
**Council Tax Band:**  
**EPC Rating:** C  
**Furnished, Part Furnished, Unfurnished**

**Chestertons Notting Hill Lettings**

30 Ledbury Road  
 Notting Hill  
 London  
 W11 2AB

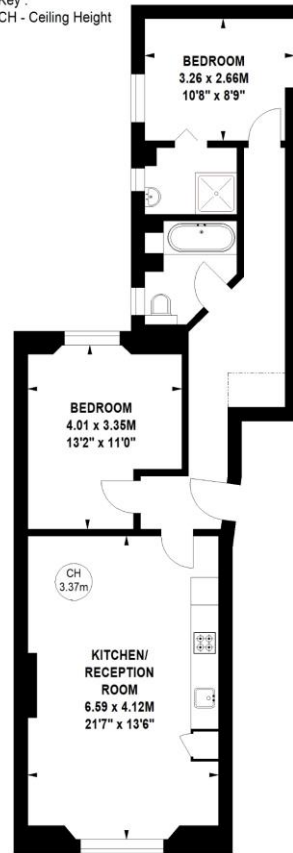
nottinghill@chestertons.co.uk  
 02030408588

## Princes Square, W2

Approximate gross internal area  
68.19 sq m / 734 sq ft



Key :  
CH - Ceiling Height



### Raised Ground Floor

Not to scale, for guidance only and must not be relied upon as a statement of fact.  
All measurements and areas are approximate only

Chesterton Global Ltd trading as Chestertons for themselves and for the vendor of this property whose agents they are, give notice that (i) these particulars do not constitute any part of an offer or contract, (ii) all statements contained within these particulars are made without responsibility on the part of Chestertons or the vendor, (iii) whilst made in good faith, none of the statements contained within these particulars are to be relied upon as a statement or representation of fact, (iv) any intending purchasers must satisfy themselves by inspection or otherwise as to the correctness of each of the statements contained within these particulars, (v) the vendor does not make or give either Chestertons or any person in their employment any authority to make or give representation or warranty whatsoever in relation to this property. Wide angle lenses may be used. ©Copyright Chestertons | Chesterton Global Ltd | Registered Office 40 Connaught Street, Hyde Park, London W2 2AB Registered Company Number 05334580.



This paper is  
100% recyclable