



Hatherley Grove
Notting Hill, W2

CHESTERTONS





A cosy two bedroom flat with its own private entrance and patio garden on Hatherley Grove, Bayswater. The property is set in a pretty period Victorian terrace, and is nearby to the up-and-coming Whiteleys Regeneration Project.

- Two bedrooms.
- Its own private entrance.
- Private patio garden.
- Excellent location near to the £3 billion Queensway Regeneration Project, Kensington Gardens and multiple transport links.

£2,750 pcm

Additional tenant charges apply (fees apply to non-AST tenancies only)

Tenancy Agreement Fee: £300

References per Tenant/Guarantor: £60

Inventory check (approx. £100 – £250 inc. VAT)

chestertons.co.uk/property-to-rent/applicable-fees

Energy Efficiency Rating		Current	Potential
90-100	A		
81-89	B		
69-80	C		
55-68	D		
39-54	E	43	67
21-38	F		
1-20	G		

Not energy efficient - higher running costs

EU Directive 2002/91/EC
England, Scotland & Wales

Minimum Term: 12 months
Deposit Required: £3,173.08
Local Authority: City of Westminster
Council Tax Band: C
EPC Rating: E

Chestertons Notting Hill Lettings

30 Ledbury Road
 Notting Hill

London
 W11 2AB

nottinghill@chestertons.co.uk
 02030408588




Hatherley Grove, W2

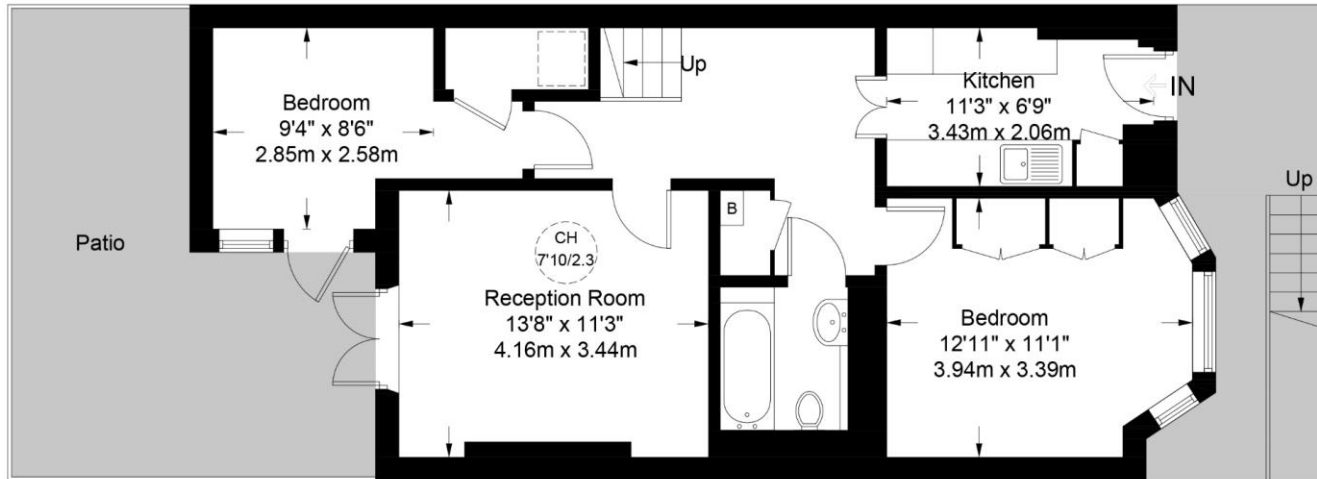
Approximate Gross Internal Area = 700 sq ft / 65.0 sq m

(Excluding Reduced Headroom)

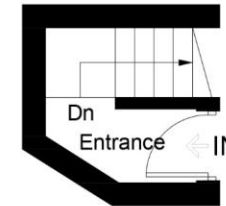
Reduced Headroom = 5 sq ft / 0.5 sq m

Total = 705 sq ft / 65.5 sq m

 = Reduced headroom below 1.5m / 5'0"



Lower Ground Floor



Ground Floor



This plan is for layout guidance only. Not drawn to scale unless stated. Windows and door openings are approximate. Whilst every care is taken in the preparation of this plan, please check all dimensions, shapes and compass bearings before making any decisions reliant upon them. (ID980335)

Chesterton Global Ltd trading as Chestertons for themselves and for the vendor of this property whose agents they are, give notice that (i) these particulars do not constitute any part of an offer or contract, (ii) all statements contained within these particulars are made without responsibility on the part of Chestertons or the vendor, (iii) whilst made in good faith, none of the statements contained within these particulars are to be relied upon as a statement or representation of fact, (iv) any intending purchasers must satisfy themselves by inspection or otherwise as to the correctness of each of the statements contained within these particulars, (v) the vendor does not make or give either Chestertons or any person in their employment any authority to make or give representation or warranty whatsoever in relation to this property. Wide angle lenses may be used. ©Copyright Chestertons | Chesterton Global Ltd | Registered Office 40 Connaught Street, Hyde Park, London W2 2AB Registered Company Number 05334580.



This paper is 100% recyclable