



Chepstow Place
Notting Hill, W2

CHESTERTONS





A superb two bedroom apartment in this popular development on Westbourne Grove.

This fantastic bright apartment in Notting Hill benefits from an open plan reception, fully fitted kitchen, double bedroom with built in wardrobes & en-suite bathroom, further double bedroom & second shower room.

This popular development offers communal gardens, resident gym, 24 hour porter & private parking. Well placed for Westbourne Grove's array of shop & restaurants & within walking distance to Notting Hill station.

- Two Bedrooms
- One Reception
- One Bathroom
- 24 hour Porter
- Resident Gym
- Video Entry System

£3,466.67 pcm

Additional tenant charges apply (fees apply to non-AST tenancies only)

Tenancy Agreement Fee: £300

References per Tenant/Guarantor: £60

Inventory check (approx. £100 – £250 inc. VAT)

chestertons.co.uk/property-to-rent/applicable-fees

| Energy Efficiency Rating | | Current | Potential |
|--------------------------|---|---------|-----------|
| 90-100 | A | | |
| 81-89 | B | | |
| 69-80 | C | 69 | 80 |
| 55-68 | D | | |
| 39-54 | E | | |
| 21-38 | F | | |
| 1-20 | G | | |

Not energy efficient - higher running costs

England, Scotland & Wales EU Directive 2002/91/EC

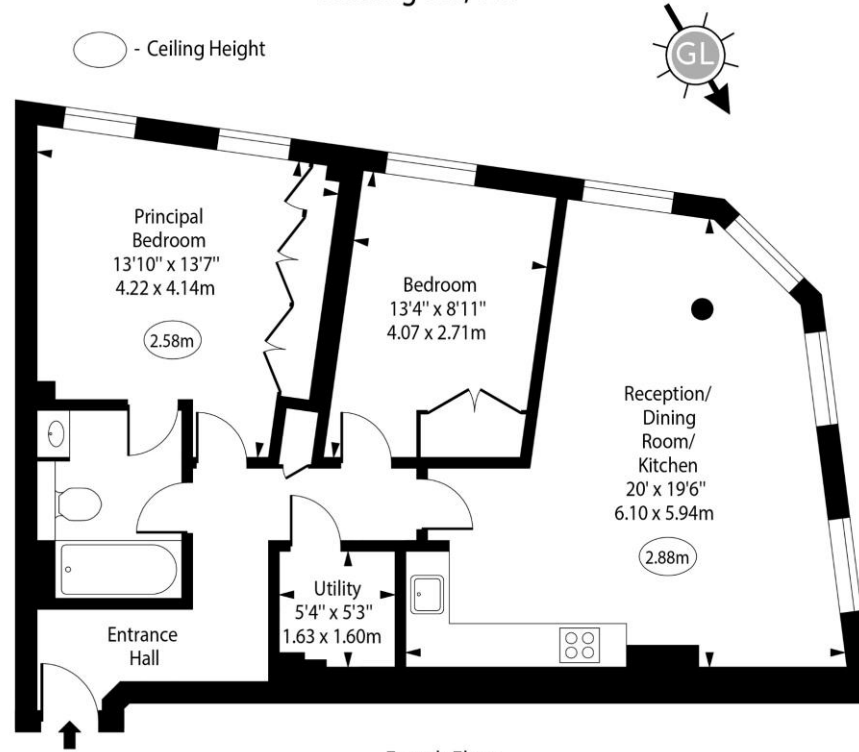
Minimum Term: 12 months
Deposit Required: Five weeks
Local Authority: City of Westminster
Council Tax Band: G
EPC Rating: C
Unfurnished

Chestertons Notting Hill Lettings

30 Ledbury Road
 Notting Hill
 London
 W11 2AB

nottinghill@chestertons.co.uk
 02030408588

The Baynards,
Chepstow Place,
Notting Hill, W2



Approx Gross Internal Area 790 Sq Ft - 73.39 Sq M

For Illustration Purposes Only - Not To Scale
www.goldlens.co.uk
Ref. No. 022240J

