



Maybourne Court  
Notting Hill, W2

CHESTERTONS





Well-presented 2 double bedroom apartment with private garden in Westbourne Grove.

Situated on the lower ground of a period building, the apartment boasts a large double bedroom with fitted wardrobes, a second double bedroom, bathroom, fully fitted kitchen, spacious reception leading to a lovely private garden. This lovely bright property offers great space, wood flooring throughout & a beautiful west facing garden. Ideally located just off Westbourne Grove, with its many shops & eateries on offer. Notting Hill & Bayswater are also a short walk away.

- Well presented & bright two bedroom apartment
- Two bedrooms, one bathroom, kitchen, reception
- A private west-facing garden
- Ideally located for Westbourne Grove

### £2,600 pcm

Additional tenant charges apply (fees apply to non-AST tenancies only)

Tenancy Agreement Fee: £300

References per Tenant/Guarantor: £60

Inventory check (approx. £100 – £250 inc. VAT)

[chestertons.co.uk/property-to-rent/applicable-fees](http://chestertons.co.uk/property-to-rent/applicable-fees)

Energy Efficiency Rating		Current	Potential
90-100	A		
81-89	B		
72-80	C	71	80
63-71	D		
54-62	E		
45-53	F		
35-44	G		

Not energy efficient - higher running costs

England, Scotland & Wales EU Directive 2002/91/EC

**Minimum Term:** 12 months  
**Deposit Required:** Five weeks  
**Local Authority:** City of Westminster  
**Council Tax Band:** C  
**EPC Rating:** C

*Chestertons Notting Hill Lettings*

30 Ledbury Road  
 Notting Hill  
 London  
 W11 2AB

nottinghill@chestertons.co.uk  
 02030408588

## Maybourne Court, W2

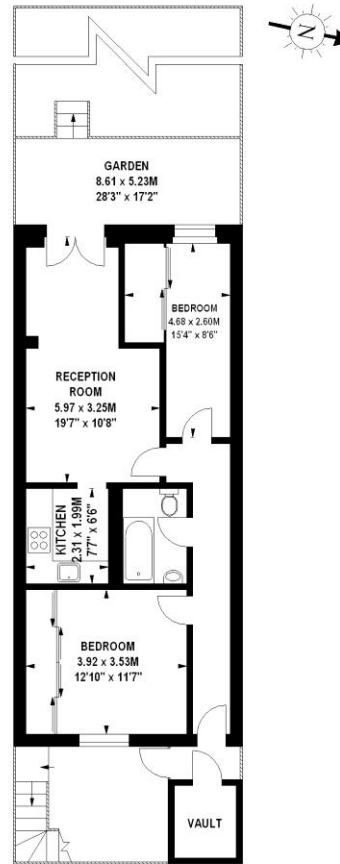
Approximate gross internal area

61.59 sq m / 663 sq ft

(Including Vault)

Vault

2.60 sq m / 28 sq ft



Lower Ground Floor

Illustration For Identification Purposes Only. Not To Scale  
\*Floorplan Drawn According To RICS Guidelines  
Copyright of FeaturePRO

Chesterton Global Ltd trading as Chestertons for themselves and for the vendor of this property whose agents they are, give notice that (i) these particulars do not constitute any part of an offer or contract, (ii) all statements contained within these particulars are made without responsibility on the part of Chestertons or the vendor, (iii) whilst made in good faith, none of the statements contained within these particulars are to be relied upon as a statement or representation of fact, (iv) any intending purchasers must satisfy themselves by inspection or otherwise as to the correctness of each of the statements contained within these particulars, (v) the vendor does not make or give either Chestertons or any person in their employment any authority to make or give representation or warranty whatsoever in relation to this property. Wide angle lenses may be used. ©Copyright Chestertons | Chesterton Global Ltd | Registered Office 40 Connaught Street, Hyde Park, London W2 2AB Registered Company Number 05334580.



This paper is  
100% recyclable