



Arundel Gardens
Notting Hill, W11

CHESTERTONS





A stunning one bedroom apartment on the second floor of a Victorian terraced house situated on a desirable street in the heart of Notting Hill.

This immaculate property has been refurbished to an exemplary standard throughout, boasting wooden floors throughout, high ceilings and views to the impressive communal gardens. Offering an open-plan reception with modern designer kitchen, luxury bathroom, double bedroom and ample storage.

Located on this highly sought after communal gardens, ideally situated for the abundance of cafes and restaurants of Kensington Gardens Square and Portobello Road. 0.6 miles to Notting Hill Gate.

- One Bedroom
- Second Floor
- Communal Gardens
- High Specification Throughout
- 0.6 miles from Notting Hill Gate

£3,350 pcm

Additional tenant charges apply (fees apply to non-AST tenancies only)

Tenancy Agreement Fee: £300

References per Tenant/Guarantor: £60

Inventory check (approx. £100 – £250 inc. VAT)

chestertons.co.uk/property-to-rent/applicable-fees

Energy Efficiency Rating		Current	Potential
90-100	A		
81-89	B		
72-80	C	72	82
63-71	D		
54-62	E		
45-53	F		
35-44	G		

Not energy efficient - higher running costs

EU Directive 2002/91/EC

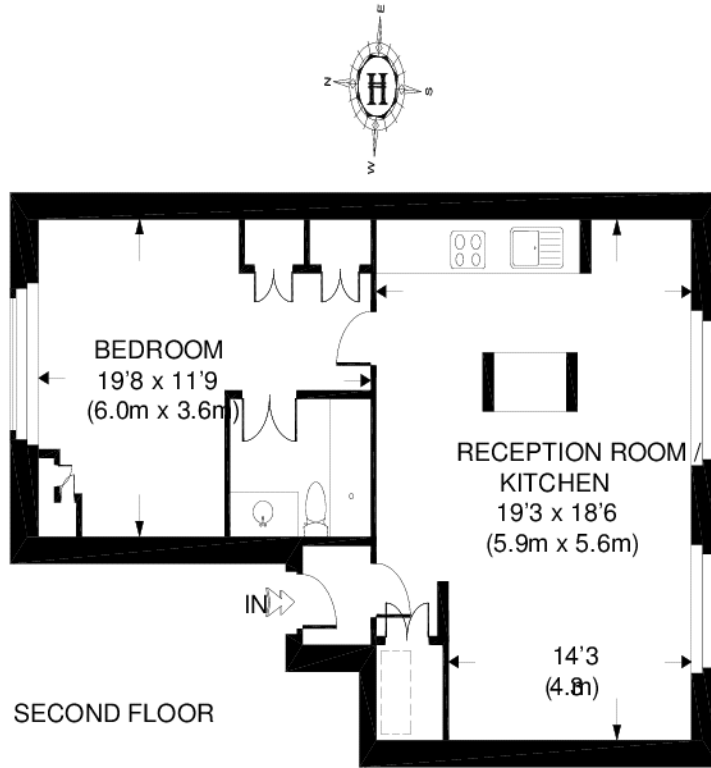
England, Scotland & Wales

Minimum Term: 12 months
Deposit Required: Five weeks
Local Authority: The Royal Borough of Kensington & Chelsea
Council Tax Band: E
EPC Rating: C
Unfurnished

Chestertons Notting Hill Lettings

30 Ledbury Road
 Notting Hill
 London
 W11 2AB

nottinghill@chestertons.co.uk
 02030408588



 = RH = RESTRICTED HEAD ROOM BELOW 5 FT. / 1.5 M. MAX

APPROXIMATE GROSS INTERNAL AREA = 603 SQ.FT. (56 SQ. M.)

This plan is for layout guidance only. Not drawn to scale unless stated. Windows & door openings are approximate. Whilst every care is taken in the preparation of this plan, please check all dimensions, shapes & compass bearings before making any decisions reliant upon it.

