



Clarendon Road
Holland Park, W11

CHESTERTONS





A smart and well-presented one bedroom apartment set on the second floor of this attractive period conversion in the heart of Notting Hill.

The apartment has recently been upgraded with a modern kitchen and bathroom, and comprises a large reception room and bedroom overlooking the pretty communal garden views at the rear of the property, which residents have access to. The apartment is available from 15th January 2024 and comes on a furnished basis. Video tour available upon request.

Clarendon Road is set to the west of Notting Hill and Ladbroke Grove, but remains moments from Portobello Road, all of the restaurants and shops of Westbourne Grove and the shopping/entertainment complex of Westfield White City.

- Second floor apartment
- Part-furnished
- Available 16/01/2024
- Modern bathroom and kitchen
- Access to communal gardens

£2,296.67 pcm

Additional tenant charges apply (fees apply to non-AST tenancies only)

Tenancy Agreement Fee: £300

References per Tenant/Guarantor: £60

Inventory check (approx. £100 – £250 inc. VAT)

chestertons.co.uk/property-to-rent/applicable-fees

Energy Efficiency Rating		
Most energy efficient - lower running costs	Current	Potential
92-100 A		
81-91 B		
69-80 C	75	81
55-68 D		
49-54 E		
45-48 F		
35-44 G		
Not energy efficient - higher running costs		
England, Scotland & Wales		
EU Directive 2002/91/EC		

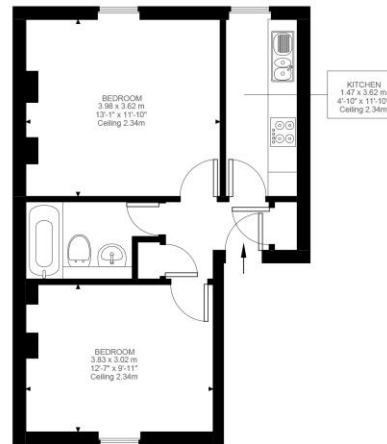
Minimum Term: 12 months
Deposit Required: Five weeks
Local Authority: Royal Borough of Kensington & Chelsea
Council Tax Band: C
EPC Rating: C
Furnished, Part Furnished, Unfurnished

Chestertons Notting Hill Lettings

30 Ledbury Road
 Notting Hill
 London
 W11 2AB

nottinghill@chestertons.co.uk
 02030408588

S ← → N



Second Floor
438 ft²

Clarendon Road, W11
Approximate Gross Internal Area
40.86 SQ.M / 438 SQ.FT

Illustration for identification purposes only. Not to scale.
Floor Plan Drawn According To RICS Guidelines.

Chesterton Global Ltd trading as Chestertons for themselves and for the vendor of this property whose agents they are, give notice that (i) these particulars do not constitute any part of an offer or contract, (ii) all statements contained within these particulars are made without responsibility on the part of Chestertons or the vendor, (iii) whilst made in good faith, none of the statements contained within these particulars are to be relied upon as a statement or representation of fact, (iv) any intending purchasers must satisfy themselves by inspection or otherwise as to the correctness of each of the statements contained within these particulars, (v) the vendor does not make or give either Chestertons or any person in their employment any authority to make or give representation or warranty whatsoever in relation to this property. Wide angle lenses may be used. ©Copyright Chestertons | Chesterton Global Ltd | Registered Office 40 Connaught Street, Hyde Park, London W2 2AB Registered Company Number 05334580.



This paper is
100% recyclable