



Royal Crescent  
Holland Park, W11

CHESTERTONS







Chestertons are delighted to bring this impressive, completely refurbished building containing five beautifully designed and dressed apartments spanning across the lower-ground floor to third floor, offers a perfect blend of modern luxury and classic charm. The apartments all contain A/C and underfloor heating and come fully furnished, boasting a sophisticated and bright interior that is sure to impress even the most discerning tenant. The apartments ensure high-quality finishes and excellent attention to detail throughout with well-proportioned rooms and stylish décor.

The lower ground floor, ground floor, first floor and third floor maisonette apartments each contain outside space, and all apartments benefit from access to the stunning communal crescent garden of Royal Crescent. Royal Crescent is conveniently located and offers easy access to local amenities, transport links, and green spaces.

- Two bedrooms
- One bathrooms
- One WC
- Communal garden
- Available now

**£4,333.33 pcm**

Additional tenant charges apply (fees apply to non-AST tenancies only)

Tenancy Agreement Fee: £300

References per Tenant/Guarantor: £60

Inventory check (approx. £100 – £250 inc. VAT)

[chestertons.co.uk/property-to-rent/applicable-fees](https://chestertons.co.uk/property-to-rent/applicable-fees)

Energy Efficiency Rating		
Energy efficiency - lower running costs	Current	Potential
A (94-100)		
B (81-93)		
C (69-80)		
D (55-68)		
E (39-54)		
F (21-38)		
G (1-20)		
Not energy efficient - higher running costs		
EU Directive 2002/91/EC		
England, Scotland & Wales		

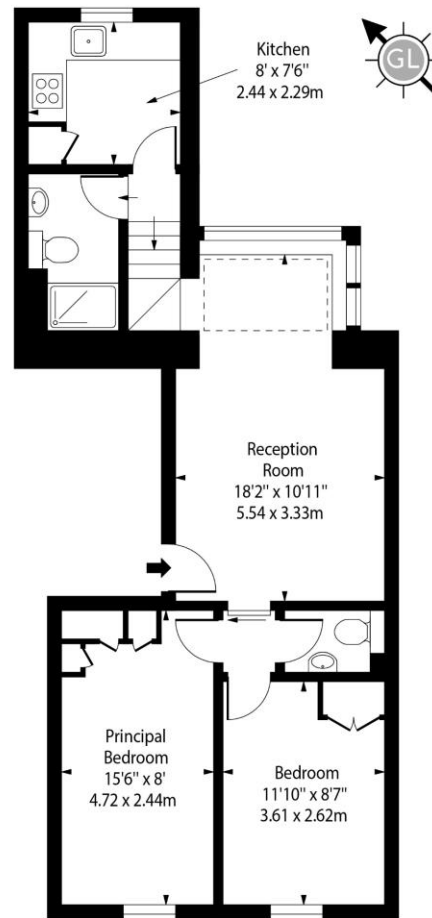
**Minimum Term:** 12 months  
**Deposit Required:** Six weeks  
**Local Authority:** Royal Borough of Kensington & Chelsea  
**Council Tax Band:**  
**EPC Rating:** D  
**Furnished**

**Chestertons Notting Hill Lettings**

30 Ledbury Road  
 Notting Hill  
 London  
 W11 2AB

[nottinghill@chestertons.co.uk](mailto:nottinghill@chestertons.co.uk)  
 02030408588

# Royal Crescent, W11



Second Floor

Approx Gross Internal Area 582 Sq Ft - 54.07 Sq M

For Illustration Purposes Only - Not To Scale  
[www.goldlens.co.uk](http://www.goldlens.co.uk)  
 Ref. No. 023455E

Chesterton Global Ltd trading as Chestertons for themselves and for the vendor of this property whose agents they are, give notice that (i) these particulars do not constitute any part of an offer or contract, (ii) all statements contained within these particulars are made without responsibility on the part of Chestertons or the vendor, (iii) whilst made in good faith, none of the statements contained within these particulars are to be relied upon as a statement or representation of fact, (iv) any intending purchasers must satisfy themselves by inspection or otherwise as to the correctness of each of the statements contained within these particulars, (v) the vendor does not make or give either Chestertons or any person in their employment any authority to make or give representation or warranty whatsoever in relation to this property. Wide angle lenses may be used. ©Copyright Chestertons | Chesterton Global Ltd | Registered Office 40 Connaught Street, Hyde Park, London W2 2AB Registered Company Number 05334580.

