



Westbourne Grove
Notting Hill, W2

CHESTERTONS





Chestertons are delighted to present this modern two bedroom apartment situated on the top floor of a well maintained building in an idyllic location on Westbourne Grove.

The apartment boasts two double bedrooms and two modern bathrooms as well as an open-plan kitchen/reception area with wooden floors. The apartment also leads out to a small balcony from the living room/kitchen. The apartment has recently been completely re-painted and modernised.

- Two bedroom apartment on Westbourne Grove
- Two brand new bathrooms
- Furnished
- Top floor apartment
- Available now

£3,000 pcm

Additional tenant charges apply (fees apply to non-AST tenancies only)

Tenancy Agreement Fee: £300

References per Tenant/Guarantor: £60

Inventory check (approx. £100 – £250 inc. VAT)

[chestertons.co.uk/property-to-rent/applicable-fees](https://www.chestertons.co.uk/property-to-rent/applicable-fees)

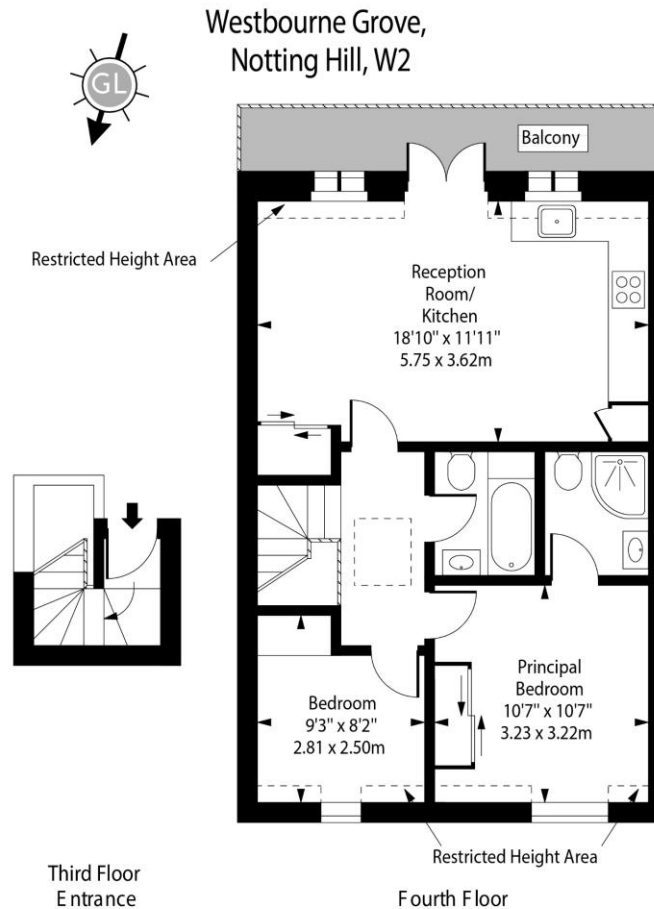
Energy Efficiency Rating		
Energy efficient - lower running costs	Current	Potential
90-100 A		
81-90 B		
71-81 C	78	83
61-71 D		
51-61 E		
41-51 F		
31-41 G		
1-31 G		
Not energy efficient - higher running costs		
EU Directive 2002/91/EC		
England, Scotland & Wales		

Minimum Term: 12 months
Deposit Required: £3,461.54
Local Authority: Royal Borough of Kensington & Chelsea
Council Tax Band:
EPC Rating: C
Furnished, Part Furnished

Chestertons Notting Hill Lettings

30 Ledbury Road
 Notting Hill
 London
 W11 2AB

nottinghill@chestertons.co.uk
 02030408588



Approx Gross Internal Area 577 Sq Ft - 53.60 Sq M

Approx. Floor Area Including Restricted Heights 600 Sq Ft - 55.74 Sq M

For Illustration Purposes Only - Not To Scale
www.goldlens.co.uk
 Ref. No. 023401MS

Chesterton Global Ltd trading as Chestertons for themselves and for the vendor of this property whose agents they are, give notice that (i) these particulars do not constitute any part of an offer or contract, (ii) all statements contained within these particulars are made without responsibility on the part of Chestertons or the vendor, (iii) whilst made in good faith, none of the statements contained within these particulars are to be relied upon as a statement or representation of fact, (iv) any intending purchasers must satisfy themselves by inspection or otherwise as to the correctness of each of the statements contained within these particulars, (v) the vendor does not make or give either Chestertons or any person in their employment any authority to make or give representation or warranty whatsoever in relation to this property. Wide angle lenses may be used. ©Copyright Chestertons | Chesterton Global Ltd | Registered Office 40 Connaught Street, Hyde Park, London W2 2AB Registered Company Number 05334580.

