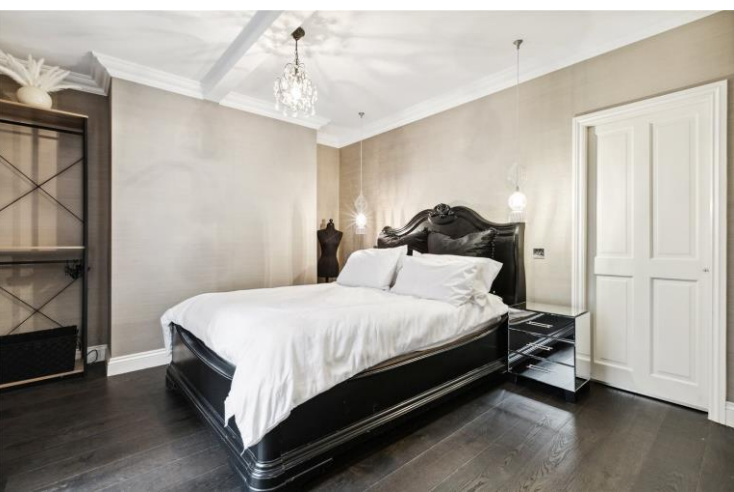




Pembridge Villas  
Notting Hill, W11

CHESTERTONS





Chestertons Notting Hill are delighted to present this stunning two bedroom home with private garden in the heart of Notting Hill. Just a short walk from Westbourne Grove and Portobello Road, Pembridge Villas is the perfect choice for fans of all things fashion. The sultry palette of this two-bedroom ground floor apartment is complemented by sparkling chandeliers and subtle gold accents, illuminated by the natural light pouring in through the windows. Step outside and you'll find yourself among the bustling streets of Notting Hill - a vibrant district renowned for its upmarket boutiques, independent coffee shops, and its resident fashionistas.

In the apartments living areas, dark wood flooring and furnishings contrast against bright white walls and soft textures, creating a chic yet cosy space. Ideal for entertaining, the glamorous bar and dining area provides an intimate space for dining. The glossy kitchen, with its quality stainless steel appliances, offers all you need to create delicious dinners - that is, if you haven't already booked yourself into one of Notting Hill's excellent restaurants.

A rare feature for London, the property boasts a private garden to the rear of the apartment. A lovely spot to enjoy a picnic or to savour a quiet moment from the buzz of the city streets.

- Luxury apartment
- Two double bedrooms
- Private garden
- Central location
- Short let

**£2,700 per week (£11,700 pcm)**

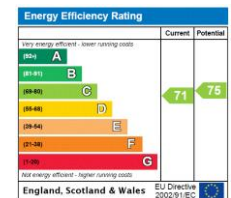
Additional tenant charges apply (fees apply to non-AST tenancies only)

Tenancy Agreement Fee: £300

References per Tenant/Guarantor: £60

Inventory check (approx. £100 – £250 inc. VAT)

[chestertons.com/property-to-rent/applicable-fees](https://www.chestertons.com/property-to-rent/applicable-fees)



**Minimum Term:** 1 month  
**Deposit Required:** 4 weeks rent.  
**Local Authority:** RBK&C  
**Council Tax Band:** G  
**EPC Rating:** C

**Chestertons Notting Hill Lettings**

30 Ledbury Road  
Notting Hill  
London  
W11 2AB

[lettings.nottinghill@chestertons.com](mailto:lettings.nottinghill@chestertons.com)

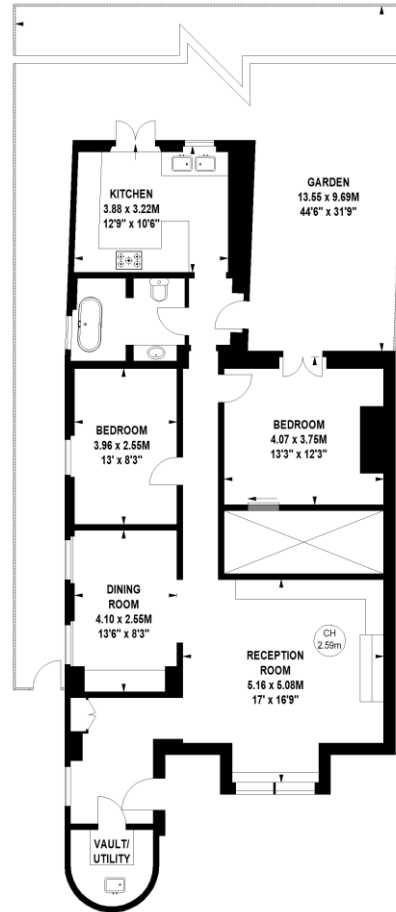
02030408588

[chestertons.com](https://www.chestertons.com)

# Pembridge Villas, W11

Approximate gross internal area  
100.05 sq m / 1077 sq ft

Key :  
CH - Ceiling Height



## Lower Ground Floor

Not to scale, for guidance only and must not be relied upon as a statement of fact.  
All measurements and areas are approximate only

Chesterton Global Ltd trading as Chestertons for themselves and for the vendor of this property whose agents they are, give notice that (i) these particulars do not constitute any part of an offer or contract, (ii) all statements contained within these particulars are made without responsibility on the part of Chestertons or the vendor, (iii) whilst made in good faith, none of the statements contained within these particulars are to be relied upon as a statement or representation of fact, (iv) any intending purchasers must satisfy themselves by inspection or otherwise as to the correctness of each of the statements contained within these particulars, (v) the vendor does not make or give either Chestertons or any person in their employment any authority to make or give representation or warranty whatsoever in relation to this property. Wide angle lenses may be used. ©Copyright Chestertons | Chesterton Global Ltd | Registered Office 40 Connaught Street, Hyde Park, London W2 2AB Registered Company Number 05334580.



This paper is  
100% recyclable