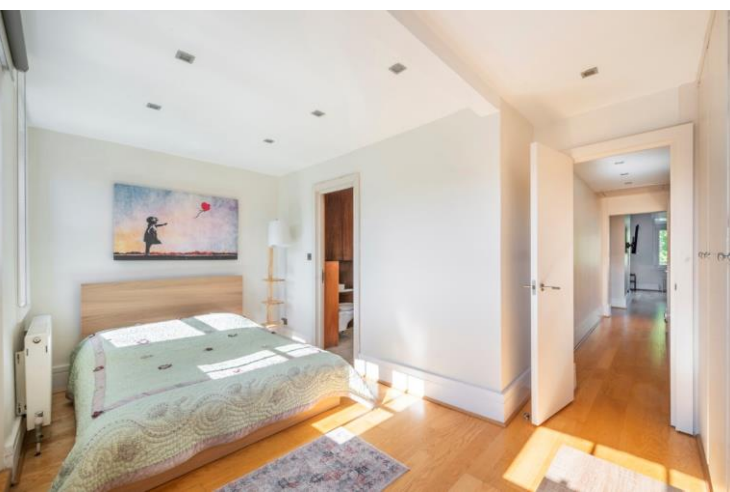




Palace Court
Notting Hill, W2





A two bedroom, two bathroom second floor flat with west-facing terrace in a pretty period building on Palace Court, Notting Hill.

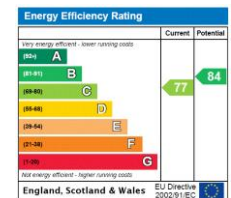
The apartment has a Share of Freehold.

The building is wider than most which allows for a double-width reception / kitchen and 1010 square feet of lateral space. It spans the entire 2nd floor and has high ceilings (measuring 3.31 meters). It consists of a large kitchen/reception room which has plenty of space for a large dining table and sofas, two double bedrooms to the rear with built-in wardrobes, two bathrooms (one being en-suite) and a sunny west-facing terrace which is large enough for outdoor sofas and is ideal for entertaining. It benefits from wooden flooring throughout and a share of the freehold.

Palace Court is one of Bayswater's finest streets and is conveniently located for the many shops and restaurants of Notting Hill Gate, Westbourne Grove, and Queensway. Notting Hill underground (Central, District, & Circle lines) and Queensway (Central line) stations are nearby (0.3 miles from the property) and the green open spaces of Kensington Gardens are a five minute walk away.

- West-facing terrace
- Two-bedrooms two-bathrooms
- 1010 square foot lateral flat
- Wooden flooring throughout
- Near to the park
- Share of Freehold

Asking Price £1,700,000



Tenure: Leasehold, 952 years remaining with a Share of Freehold.

Service Charge: £2,918 p.a.

Ground Rent: £0

Local Authority: Westminster Council

Council Tax Band: F

Chestertons Notting Hill Sales

30 Ledbury Road

Notting Hill

London

W11 2AB

nottinghill@chestertons.co.uk

0203 040 8585

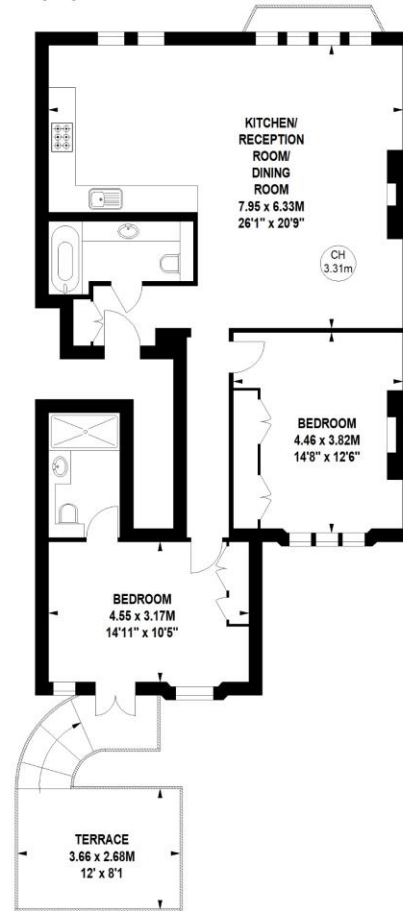
chestertons.co.uk

Palace Court, W2

Approximate gross internal area

93.83 sq m / 1010 sq ft

Key :
CH - Ceiling Height



Second Floor

Not to scale, for guidance only and must not be relied upon as a statement of fact.
All measurements and areas are approximate only

Chesterton Global Ltd trading as Chestertons for themselves and for the vendor of this property whose agents they are, give notice that (i) these particulars do not constitute any part of an offer or contract, (ii) all statements contained within these particulars are made without responsibility on the part of Chestertons or the vendor, (iii) whilst made in good faith, none of the statements contained within these particulars are to be relied upon as a statement or representation of fact, (iv) any intending purchasers must satisfy themselves by inspection or otherwise as to the correctness of each of the statements contained within these particulars, (v) the vendor does not make or give either Chestertons or any person in their employment any authority to make or give representation or warranty whatsoever in relation to this property. Wide angle lenses may be used. ©Copyright Chestertons | Chesterton Global Ltd | Registered Office 40 Connaught Street, Hyde Park, London W2 2AB Registered Company Number 05334580.



This paper is
100% recyclable