



Bramley Road
Notting Hill, W10

CHESTERTONS





A two bedroom, two bathroom split level apartment with exceptional outdoor space. Set within a well maintained building of just two flats, this stylish home arranged over the first and the second floors offers bright contemporary living in a desirable London location.

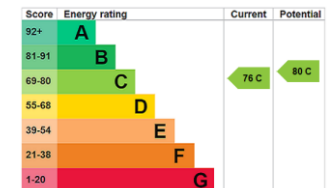
The first floor features a spacious living room with floor to ceiling glass sliding doors opening onto a large west facing private terrace, perfect for relaxing or entertaining. The modern kitchen, complete with quartz worktops and generous storage, also opens directly to the terrace, creating a seamless indoor-outdoor flow. A modern shower room completes this level.

Upstairs, the main bedroom has built in wardrobes and floor to ceiling windows leading to a private balcony. The second bedroom is generously sized with built in storage, ideal as a second bedroom or home office. A stylish shower room, separate W.C., and further storage is also on this floor.

Transport is never an issue as Bramley Road is situated less than 100 metres from Latimer Road Underground Station, and the apartment is in close proximity to the iconic neighbourhoods of Holland Park and Notting Hill.

- Two bedroom, two bathroom split level apartment
- Spacious living room opening onto a large private terrace
- Approx. 824 sq. ft.
- Main bedroom with built in wardrobes and access to private balcony
- Chain free

Asking Price £475,000



Tenure: Leasehold. 100 years remaining.

Service Charge: £1728.54 pa

Ground Rent: £10

Local Authority: Kensington and Chelsea

Council Tax Band: D

Chestertons Notting Hill Sales

30 Ledbury Road

Notting Hill

London

W11 2AB

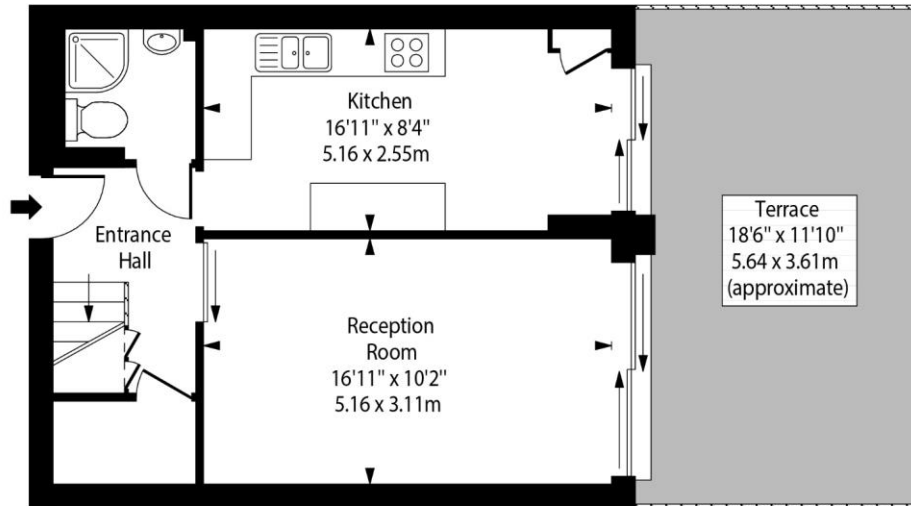
nottinghill@chestertons.co.uk

0203 040 8585

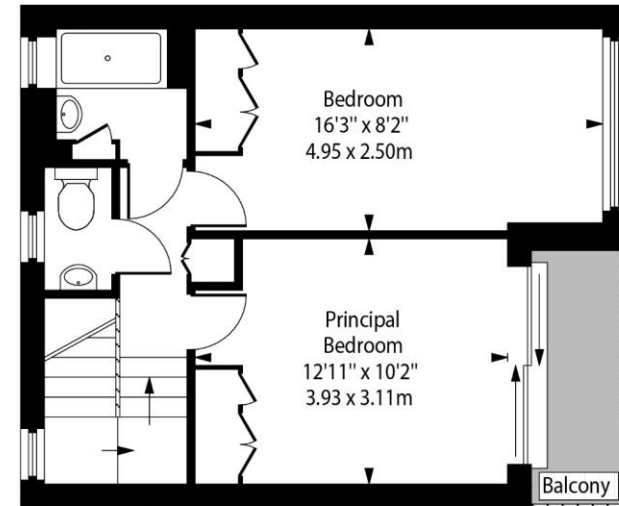
chestertons.co.uk

Bramley Road, W10

○ - Ceiling Height



First Floor



Second Floor

Approx Gross Internal Area

824 Sq Ft - 76.55 Sq M

Every attempt has been made to ensure the accuracy of the floor plan shown. However, all measurements, fixtures, fittings, and data shown are approximate interpretations and for illustrative purposes only. Measured according to the RICS. Not To Scale.

www.goldlens.co.uk

Ref. No. 029671.1WI

