



Lonsdale Road
Notting Hill, W11

CHESTERTONS





A beautifully refurbished two bedroom apartment in Notting Hill, moments from Westbourne Grove.

Set on the first floor of an attractive, wide period conversion, this charming flat has been fully refurbished and is presented in excellent condition throughout.

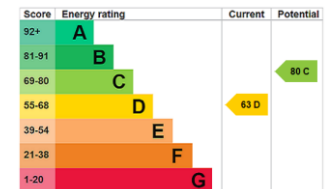
The well balanced layout comprises a bright south facing reception and dining room, a separate contemporary kitchen, two bedrooms with built in storage, and a stylish bathroom.

Period sash windows at the front bathe the living space in natural light, while those at the rear offer a peaceful outlook over the quiet, cobbled Colville Mews.

Lonsdale Road is one of Notting Hill's most attractive residential streets, lined with colourful houses and ideally positioned just behind the most desirable stretch of Westbourne Grove, known for its acclaimed restaurants, bars, and boutiques.

- Fully refurbished and presented in excellent condition
- First floor
- Bright south-facing reception room
- Two bedrooms with built-in storage
- Prime Notting Hill location just behind Westbourne Grove

Asking Price £725,000



Tenure: Leasehold. 945 years remaining with a Share of Freehold.

Service Charge: £3,000 p.a.

Ground Rent: £0

Local Authority: Kensington and Chelsea

Council Tax Band: D

Chestertons Notting Hill Sales

30 Ledbury Road

Notting Hill

London

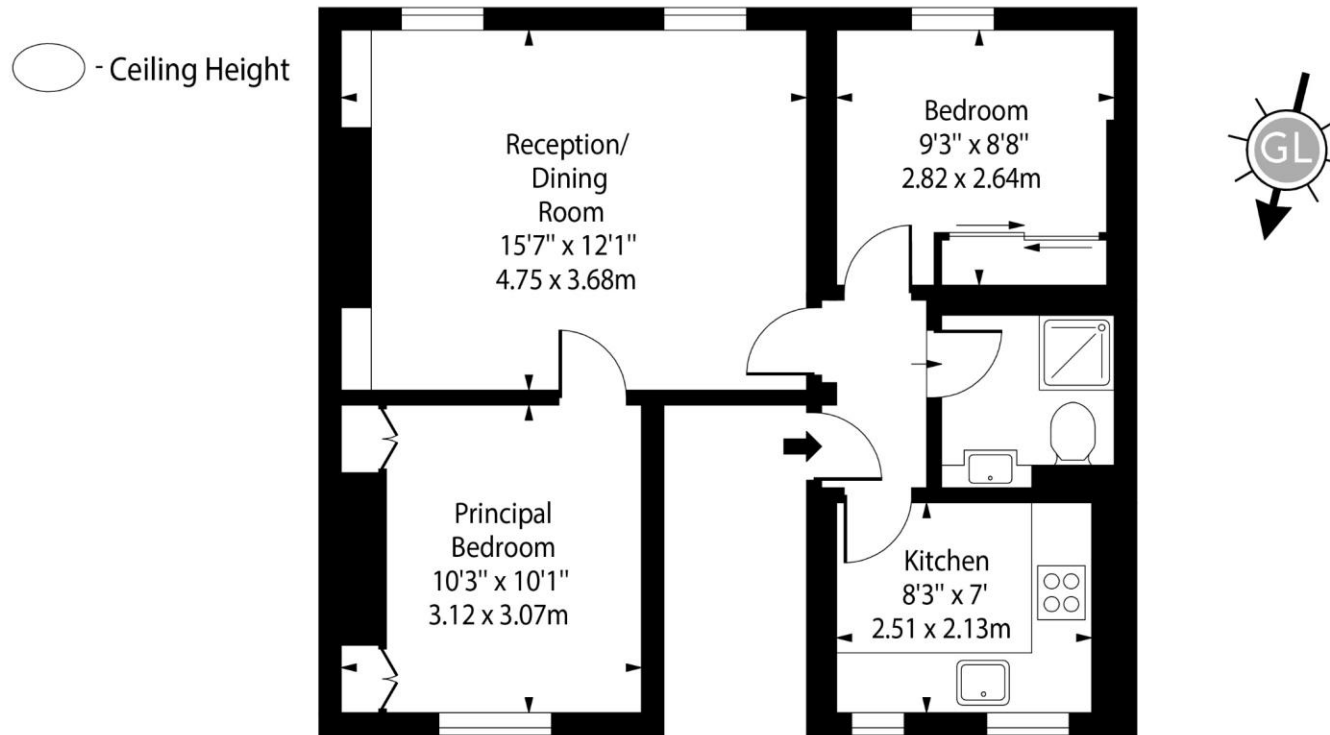
W11 2AB

nottinghill@chestertons.co.uk

0203 040 8585

chestertons.co.uk

Lonsdale Road, W11



First Floor

Approx Gross Internal Area 515 Sq Ft - 47.84 Sq M

Every attempt has been made to ensure the accuracy of the floor plan shown. However, all measurements, fixtures, fittings, and data shown are approximate interpretations and for illustrative purposes only. Measured according to the RICS. Not To Scale.

www.goldlens.co.uk

Ref. No. 029368E