



Thornbury Court
Chepstow Villas, Notting Hill, W11

CHESTERTONS



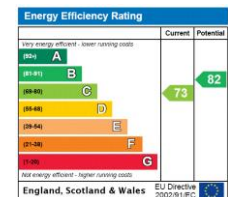


Set on the first floor of the stunning Thornbury Court located on the sought-after Chepstow Villas, W11. This superb two-bedroom, two-bathroom (one en-suite) flat is finished to an exceptional standard and boasts spacious rooms and lots of natural light.

Thornbury Court is a beautiful period mansion block with lift and porter on Chepstow Villas. Set in the Royal Borough of Kensington and Chelsea, it is well located for the many shops and restaurants of Westbourne Grove, Portobello Road, and Notting Hill Gate. Notting Hill Gate underground station (Central, District and Circle lines) is 0.4 miles away.

- Stunning mansion block with lift and porter.
- Great location - in the heart of Notting Hill.
- Beautiful finish.
- Two bedrooms, two bathrooms.
- Kensington and Chelsea parking permits available.

Offers in excess of £1,000,000.



Tenure: Leasehold, 955 years remaining with a Share of Freehold.
Service Charge: £4,305.31 (including reserve fund).
Ground Rent: £0
Local Authority: Kensington and Chelsea
Council Tax Band: F

Chestertons Notting Hill Sales

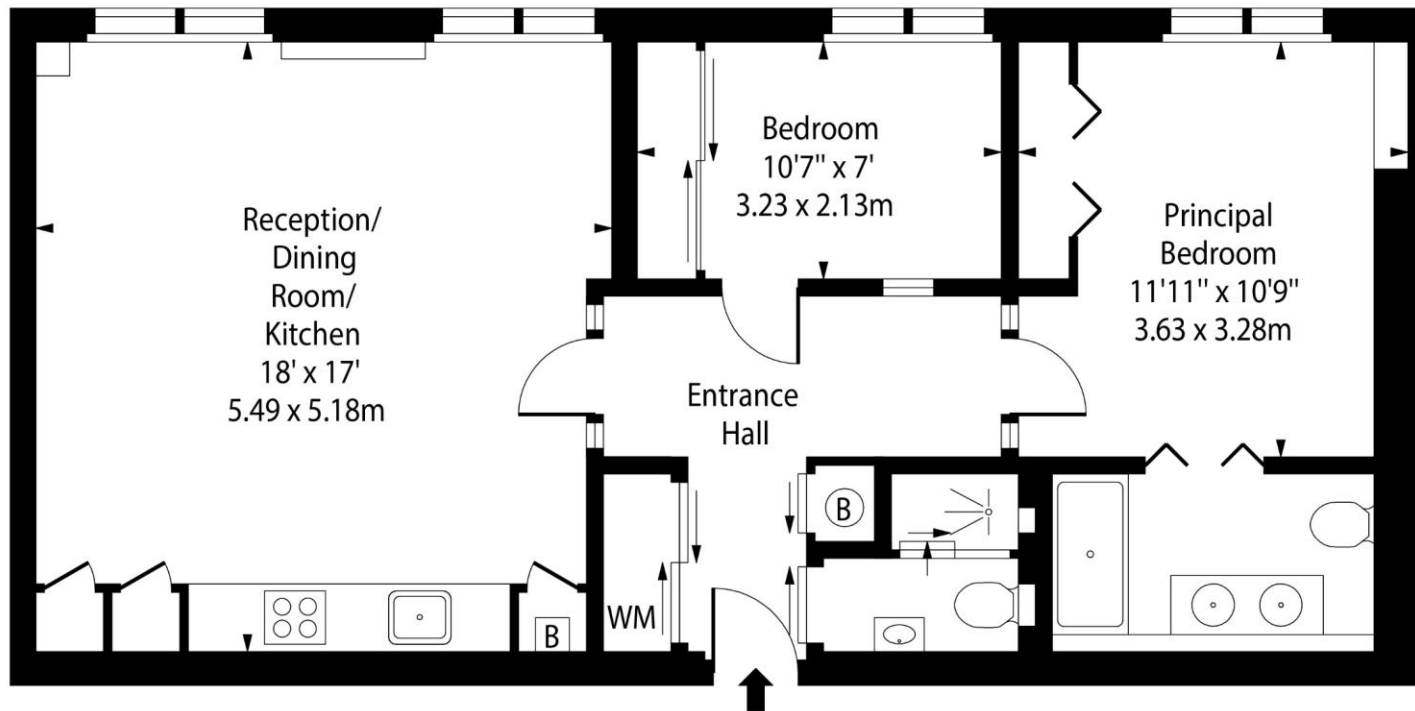
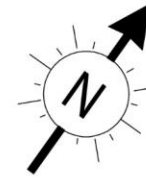
30 Ledbury Road
 Notting Hill
 London
 W11 2AB

nottinghill@chestertons.co.uk

0203 040 8585

chestertons.co.uk

Thornbury Court, Chepstow Villas, W11



First Floor

Approx Gross Internal Area 762 Sq Ft - 70.79 Sq M

For Illustration Purposes Only - Not To Scale

Chesterton UK Services Limited trading as Chestertons for themselves and for the vendor of this property whose agents they are, give notice that (i) these particulars do not constitute any part of an offer or contract, (ii) all statements contained within these particulars are made without responsibility on the part of Chestertons or the vendor, (iii) whilst made in good faith, none of the statements contained within these particulars are to be relied upon as a statement or representation of fact, (iv) any intending purchasers must satisfy themselves by inspection or otherwise as to the correctness of each of the statements contained within these particulars, (v) the vendor does not make or give either Chestertons or any person in their employment any authority to make or give representation or warranty whatsoever in relation to this property. Wide angle lenses may be used. ©Copyright Chestertons | Chesterton UK Services Limited | Registered Office 40 Connaught Street, Hyde Park, London W2 2AB Registered Company Number 05334580.

