



Windsor Court
Moscow Road, W2

CHESTERTONS





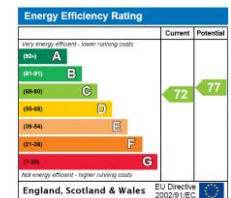
This beautifully refurbished, west-facing one-bedroom flat is situated on the 3rd floor of a well-maintained mansion block in Notting Hill.

Boasting wooden floors throughout, the flat is filled with natural light thanks to its large sash windows. The spacious open-plan living area features a fully equipped modern kitchen, perfect for both relaxing and entertaining. The generously sized bedroom includes built-in wardrobes, and an elegant bathroom.

Windsor Court, a sought-after portered building with a lift on Moscow Road, offers convenient proximity to the vibrant shops and restaurants of Westbourne Grove and Queensway. Bayswater (District & Circle lines) and Queensway (Central line) underground stations are just 0.3 miles away, as are the scenic green spaces of Kensington Palace Gardens.

- Beautifully refurbished one-bedroom flat on the 4th floor
- Bright, west-facing with large sash windows and wooden floors
- Spacious open-plan living area with modern kitchen
- Elegant bathroom and built-in bedroom wardrobes
- Prime location near Westbourne Grove, Queensway, and transport links

Asking Price £650,000



Tenure: Leasehold 141 years remaining.
Service Charge: £1,999 p.a.
Ground Rent: Peppercorn
Local Authority: Westminster
Council Tax Band: D

Chestertons Notting Hill Sales

30 Ledbury Road
Notting Hill
London
W11 2AB

nottinghill@chestertons.co.uk

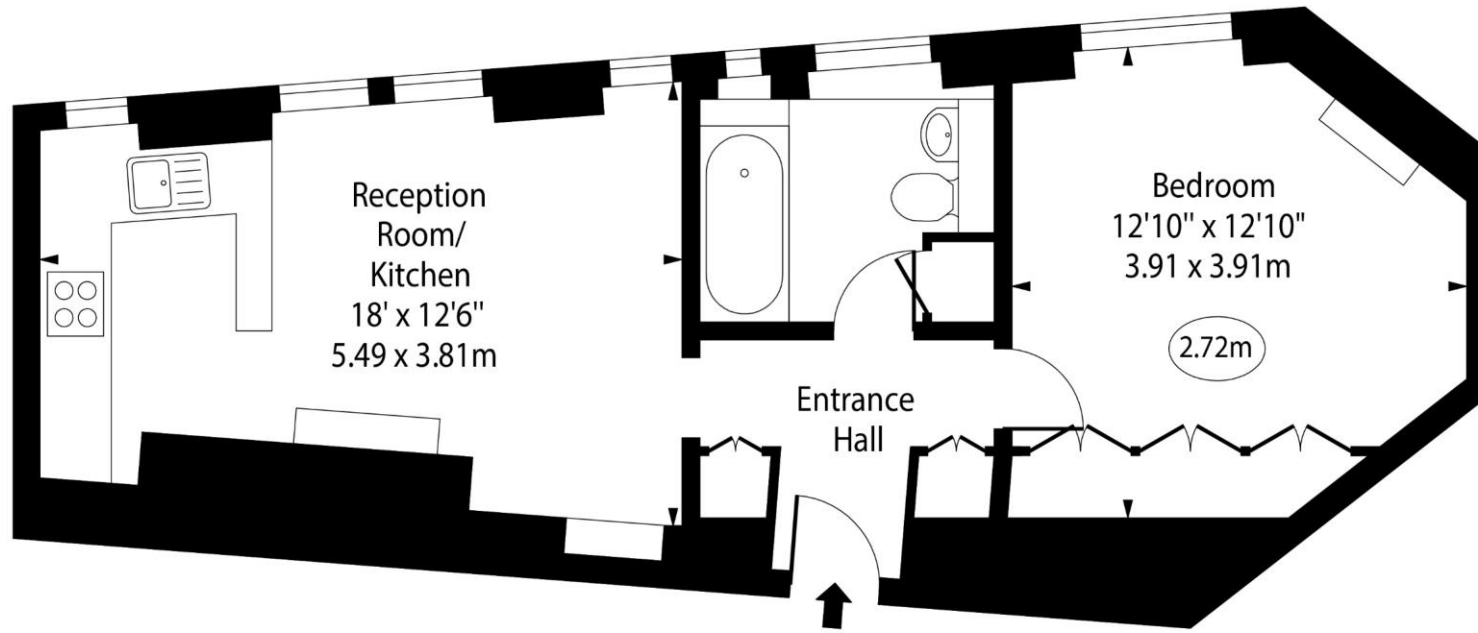
0203 040 8585

chestertons.co.uk

Windsor Court, Moscow Road, W2



○ - Ceiling Height



Third Floor

Approx Gross Internal Area 465 Sq Ft - 43.20 Sq M

For Illustration Purposes Only - Not To Scale

www.goldlens.co.uk

Ref. No. 025641E

