

# COLVILLE TERRACE

W11

CHESTERTONS





Welcome to Colville Terrace.

Amalgamated across two period buildings in the heart of Notting Hill, is this exceptional lateral second floor flat comprising of four bedrooms and two bathrooms.

Newly refurbished to an exceptionally high standard with Herringbone Oak flooring, under-floor heating throughout, gas fireplace, double-glazed timber sash windows, bespoke joinery, Devol brassware and Miele appliances in the kitchen.

Colville Terrace is a beautiful, colourful street tucked behind Westbourne Grove in the heart of Notting Hill. It is well located for the many famous boutiques and restaurants of Westbourne Grove, Ledbury Road and Portobello Road (The Ledbury with \*\*\* Michelin stars and recently awarded Dorian with \* Michelin Star).

Notting Hill Gate underground station (Central, District and Circle Lines) is 0.6 miles away.











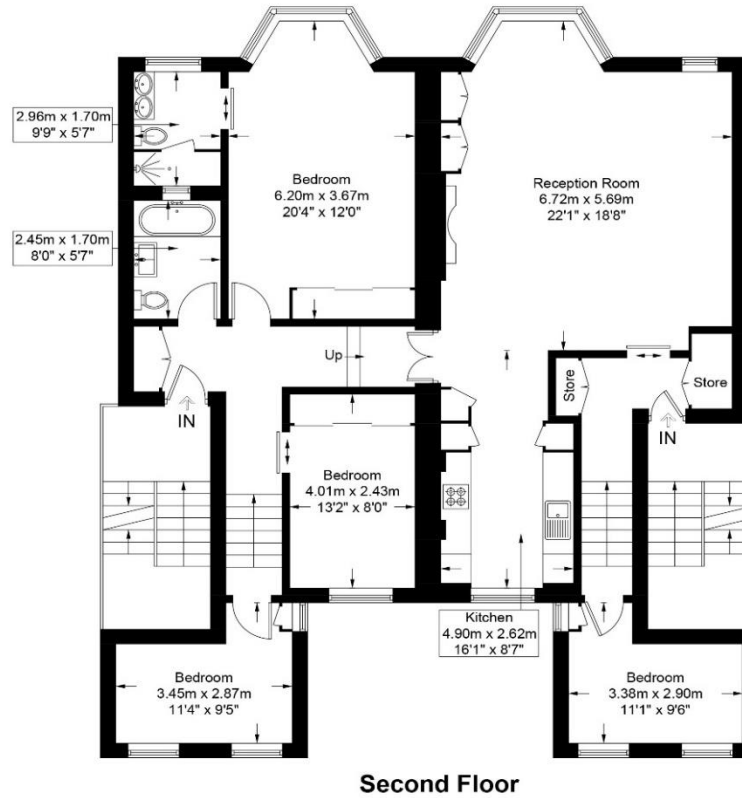
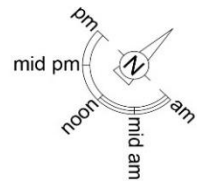






# Colville Terrace, W11

Approximate Gross Internal Area = 1413 sq ft / 131.3 sq m



This plan is for layout guidance only and is not drawn to scale unless stated. All dimensions, including windows, doors, and the Total Gross Internal Area (GIA), are approximate. For precise measurements, please consult a qualified architect or surveyor before making any decisions based on this plan.



# COLVILLE TERRACE

W11

Asking price: £2,500,000 | Tenure: Leasehold with 999 years remaining | Service charge: £3,000 p.a.

| Local authority: Royal Borough of Kensington and Chelsea | Council tax band: TBC

| EPC: C

**CHESTERTONS**